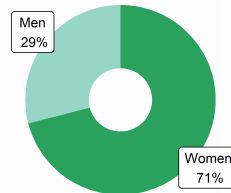


Rhode Island BY THE NUMBERS

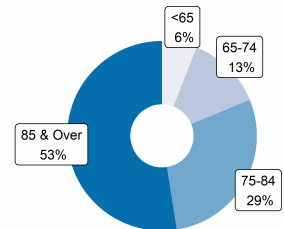
FACTS AND FIGURES FOR THE PROFESSION

ASSISTED LIVING RESIDENTS

Resident Gender



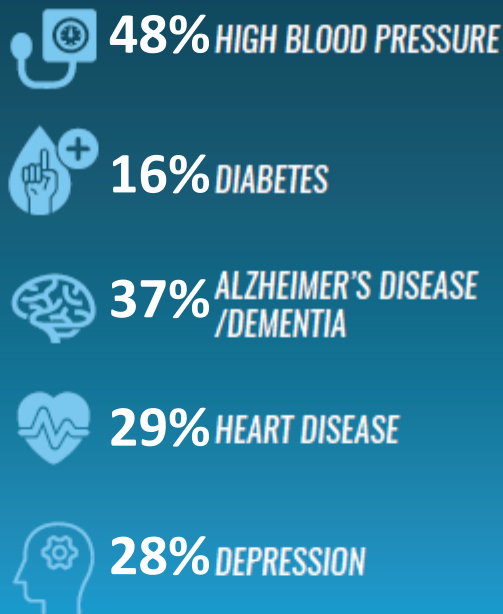
Resident Age



ACTIVITIES OF DAILY LIVING



COMMON CONDITIONS



ASSISTED LIVING PROVIDERS



23% of residents rely on Medicaid for their long term care in assisted living

ECONOMIC IMPACT

*Total impact is the sum of direct, indirect, and induced effects on the economy of the state.
Sources: CDC/NCHS, National Post-acute and Long-Term Care Study (2020), State Licensure Website, IMPLAN Economic Impact Data and Software

WORKFORCE

1,144 jobs direct

1,715 jobs total*

ECONOMIC ACTIVITY

\$132.6 Million direct

\$237.7 Million total*

TAX REVENUE

\$10 Million state/local

\$24 Million federal