

**STATE OF RHODE ISLAND GENERAL ASSEMBLY
LAND USE COMMISSION**



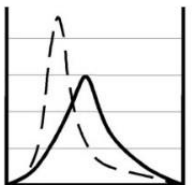
**RHODE ISLAND GENERAL ASSEMBLY
LAND USE COMMISSION**

**THOMAS E. DELLER, CHAIR
MARIA MACK, VICE CHAIR**



JCE

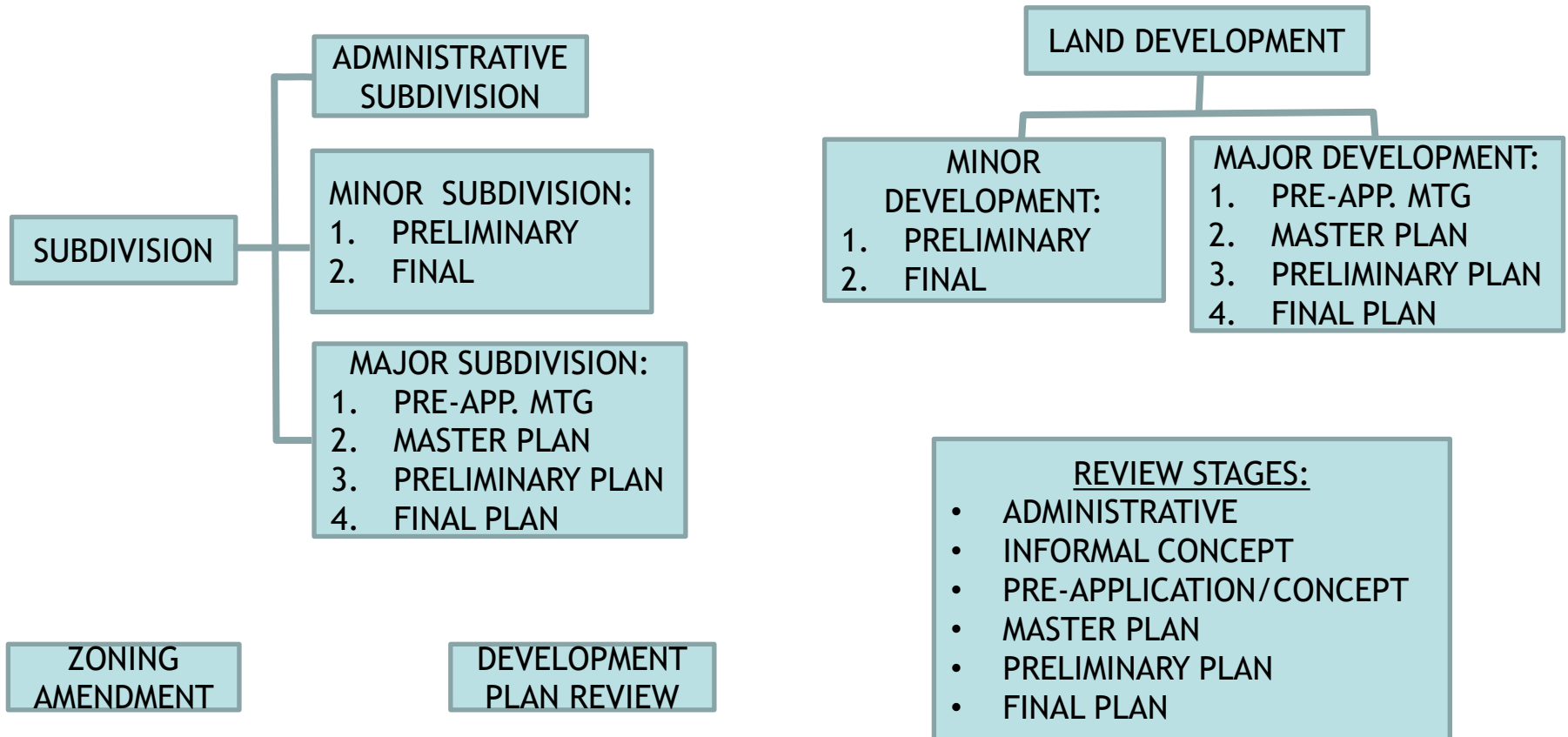
JOE CASALI ENGINEERING, INC.
CIVIL • SITE DEVELOPMENT • TRANSPORTATION
DRAINAGE • WETLANDS • ISDS • TRAFFIC • FLOODPLAIN
300 POST ROAD, WARWICK, RI 02888
(401) 944-1300 (401) 944-1313 FAX WWW.JOECASALI.COM



STATE OF RHODE ISLAND GENERAL ASSEMBLY LAND USE COMMISSION

LAND USE PROCESS

- HERE BEFORE YOU TODAY FOR AN EXPLANATION OF THE LAND USE PROCESS IN THE STATE OF RHODE ISLAND

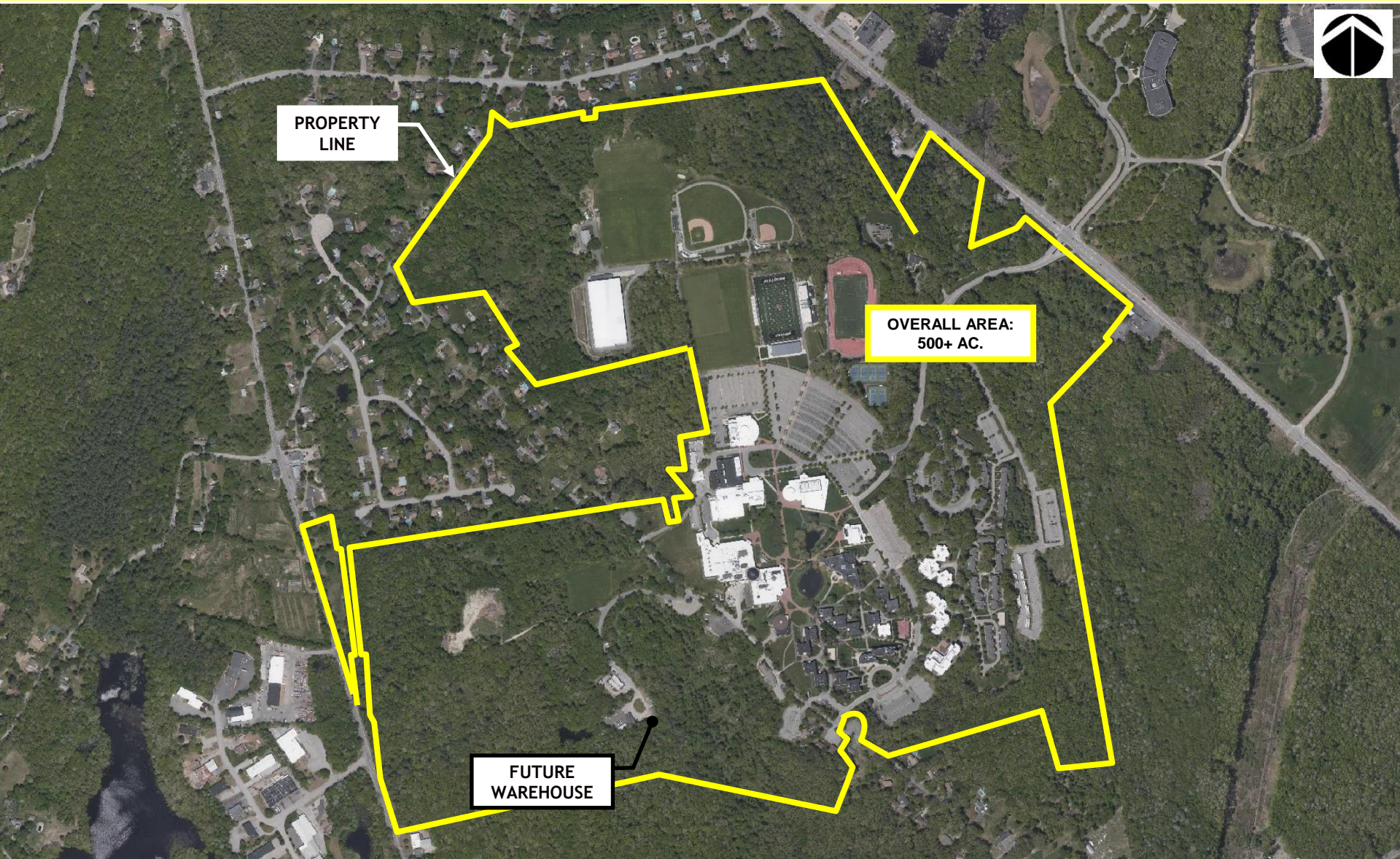


STATE OF RHODE ISLAND GENERAL ASSEMBLY LAND USE COMMISSION

LAND USE PROCESS

- **PROJECT EXAMPLES**
 1. **SECONDARY EDUCATION**
 2. **MULTI-FAMILY RESIDENTIAL**
 3. **PLACE OF WORSHIP**
 4. **COMMERCIAL PROJECT**

STATE OF RHODE ISLAND GENERAL ASSEMBLY LAND USE COMMISSION



STATE OF RHODE ISLAND GENERAL ASSEMBLY

LAND USE COMMISSION

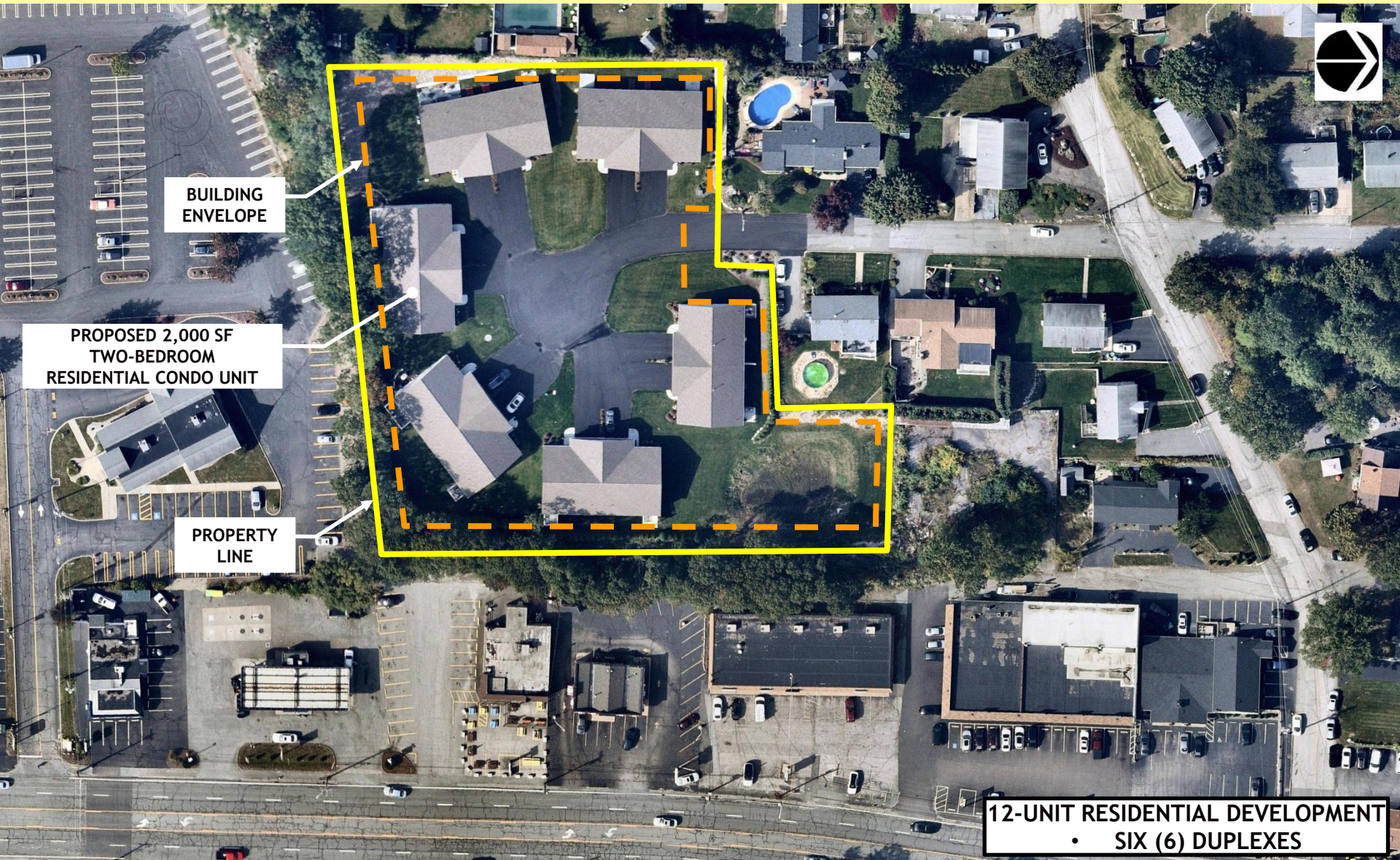
PERMITTING REQUIREMENTS

- 1. PRE-APPLICATION MEETING**
 - 2. MASTER PLAN HEARING**
 - 3. ZONING BOARD OF REVIEW**
 - 4. RIDEM - FRESHWATER WETLANDS**
 - 5. RIDEM – STORMWATER**
 - 6. SOIL EROSION**
 - 7. SEWER AUTHORITY**
 - 8. WATER AUTHORITY**
 - 9. PRELIMINARY PLAN**
 - 10. FINAL PLAN**
- TOTAL PROJECT TIME: 1 YEAR ANTICIPATED**

STATE OF RHODE ISLAND GENERAL ASSEMBLY LAND USE COMMISSION



STATE OF RHODE ISLAND GENERAL ASSEMBLY LAND USE COMMISSION



STATE OF RHODE ISLAND GENERAL ASSEMBLY

LAND USE COMMISSION

PERMITTING REQUIREMENTS

TIMEFRAME:

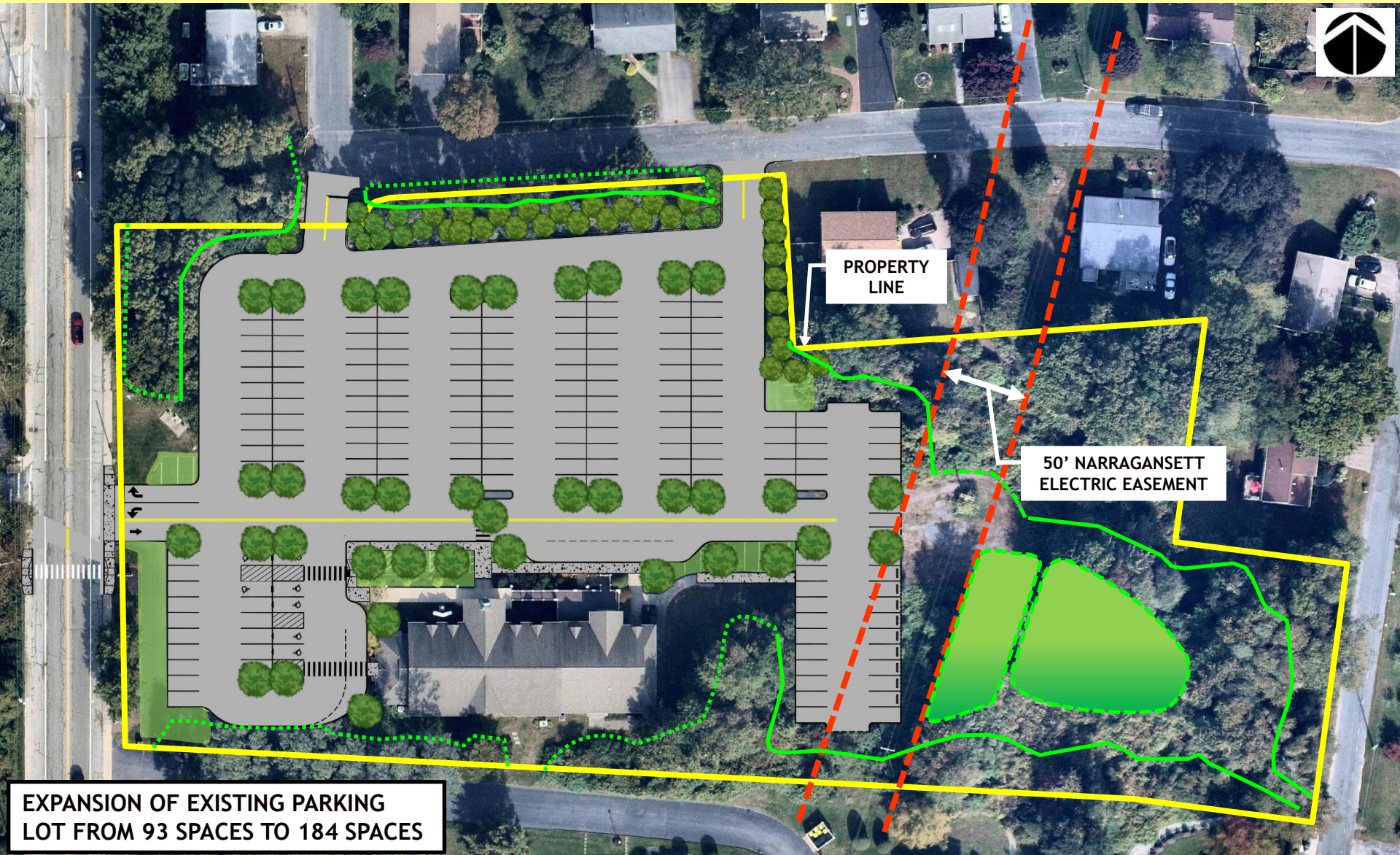
FIRST SUBMISSION: SEPTEMBER 11, 2018
FINAL APPROVAL: OCTOBER 14, 2019
TOTAL TIME: 13 MONTHS (398 DAYS)

- 1. MASTER PLAN APPROVAL (SEPTEMBER 11, 2018)**
- 2. DEVELOPMENT PLAN REVIEW COMMITTEE -PRE-APP (MARCH 13, 2019)**
- 3. RIDEM UIC/GWD PERMIT (JUNE 11, 2019)**
- 4. RIDOT PHYSICAL ALTERATION PERMIT (PAP) (JULY 16, 2019)**
- 5. DEVELOPMENT PLAN REVIEW COMMITTEE - PRELIMINARY (JULY 19, 2019)**
- 6. PUBLIC WORKS DEPARTMENT / ENGINEERING DIVISION (JULY 19, 2019)**
- 7. PUBLIC WORKS DEPARTMENT / TRAFFIC STUDY DIVISION (JULY 19, 2019)**
- 8. FIRE DEPARTMENT (JULY 19, 2019)**
- 9. PLANNING COMMISSION – PRELIMINARY (AUGUST 6, 2019)**
- 10. SEWER AUTHORITY [DPW (SEWER)] (SEPTEMBER 17, 2019)**
- 11. WATER AUTHORITY**
- 12. DEVELOPMENT PLAN REVIEW COMMITTEE – FINAL (OCTOBER 2019)**
- 13. FINAL PLAN – ADMINISTRATIVE (OCTOBER 2019)**

STATE OF RHODE ISLAND GENERAL ASSEMBLY LAND USE COMMISSION



STATE OF RHODE ISLAND GENERAL ASSEMBLY LAND USE COMMISSION



STATE OF RHODE ISLAND GENERAL ASSEMBLY

LAND USE COMMISSION

PERMITTING REQUIREMENTS

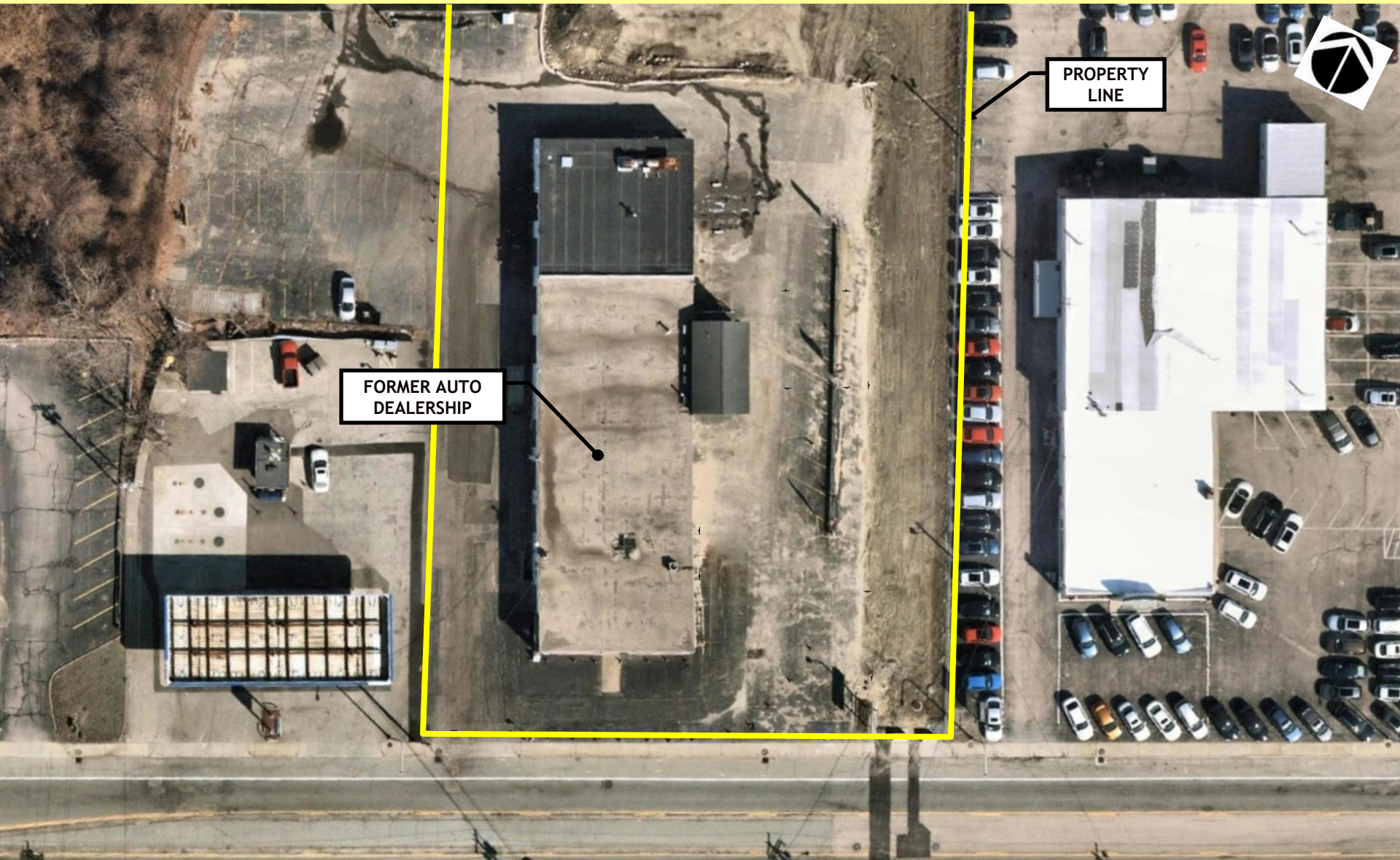
1. BUILDING PERMIT FILING WITH DEPARTMENT OF BUILDING INSPECTIONS (JUNE 4, 2019)
2. BUILDING PERMIT REJECTED (DECEMBER 24, 2019)
3. RHODE ISLAND COASTAL RESOURCES MANAGEMENT COUNCIL – PRELIMINARY DETERMINATION (OCT. 2019)
4. ENGINEERING DEPARTMENT (DEC. 20, 2019)
5. RHODE ISLAND DEPARTMENT OF ENVIRONMENTAL MANAGEMENT (RIDEM) CONSTRUCTION STORMWATER PERMIT (WQC) AND RIPDES (DECEMBER 30, 2019)
6. RHODE ISLAND DEPARTMENT OF TRANSPORTATION (RIDOT) PAP APPLICATION (PAP) (JANUARY 3, 2020)
7. PLANNING FOR RECOMMENDATION TO MUNICIPALITY COUNCIL FOR ROADWAY ABANDONMENT (MAR. 24, 2021)
8. ROADWAY ABANDONMENT PETITION OF UNIMPROVED PORTION OF STREET RIGHT-OF-WAY APPROVED BY MUNICIPALITY COUNCIL (APRIL 19, 2021)
9. SITE PLAN REVIEW AND POSITIVE RECOMMENDATION TO THE ZONING BOARD OF REVIEW FROM PLANNING BOARD (IN PROGRESS)
10. ZONING BOARD OF REVIEW FOR SPECIAL USE PERMIT (TBD)
11. LAND USE APPLICATION WITH NATIONAL GRID (IN PROGRESS)

<p><u>TIMEFRAME:</u> FIRST SUBMISSION: JUNE 4, 2019 TOTAL TIME TO DATE (STILL ON-GOING): 2 YEARS, 9 MONTHS, AND 11 DAYS (1,015 DAYS AS OF TODAY)</p>

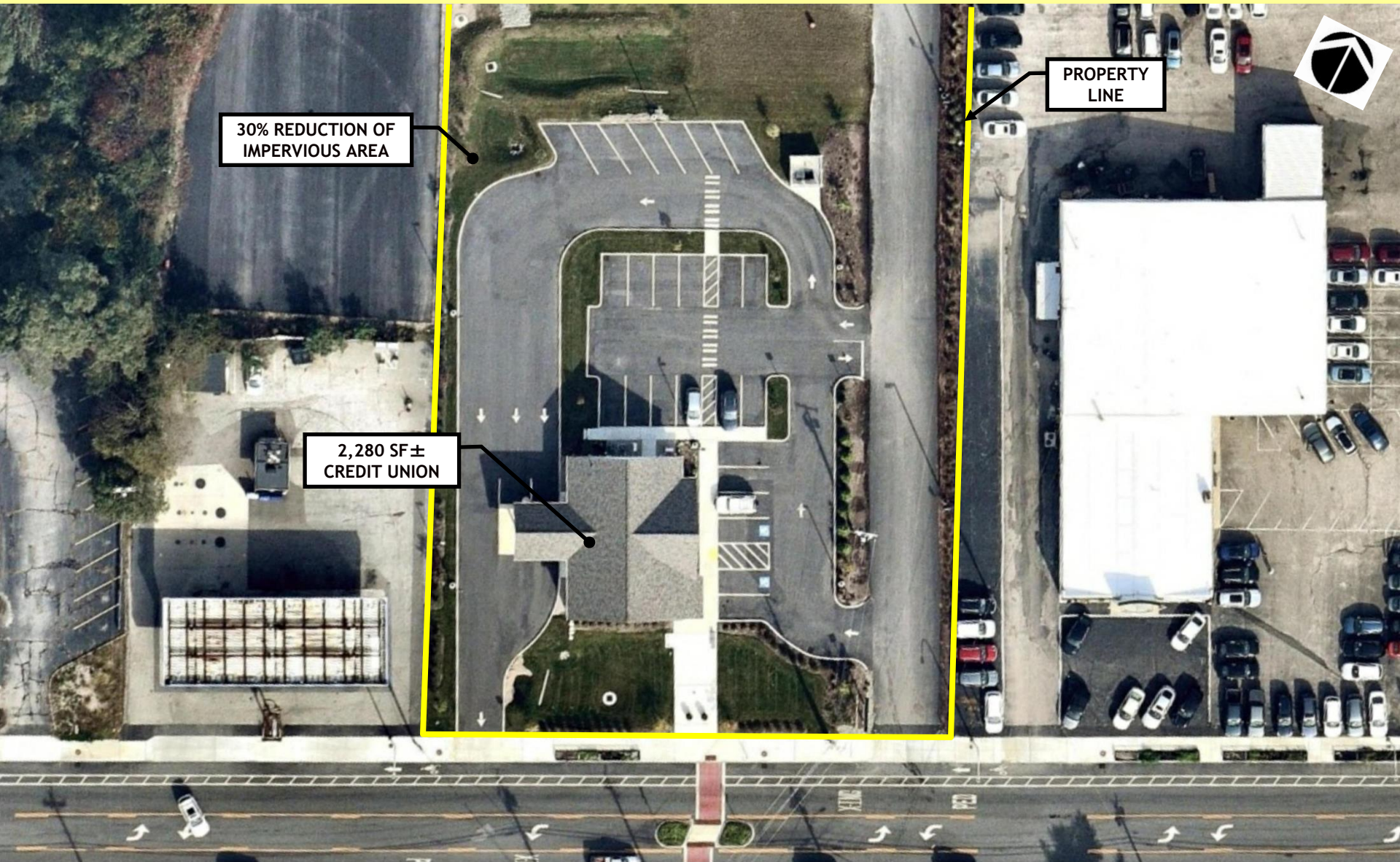
STATE OF RHODE ISLAND GENERAL ASSEMBLY LAND USE COMMISSION



STATE OF RHODE ISLAND GENERAL ASSEMBLY LAND USE COMMISSION



STATE OF RHODE ISLAND GENERAL ASSEMBLY LAND USE COMMISSION



STATE OF RHODE ISLAND GENERAL ASSEMBLY

LAND USE COMMISSION

PERMITTING REQUIREMENTS

TIMEFRAME:

FIRST SUBMISSION: JULY 6, 2018

FINAL APPROVAL: AUGUST 26, 2019

TOTAL TIME: 1 YEAR, 1 MONTH, AND 20 DAYS
(416 DAYS)

1. PRE-APPLICATION CONCEPT REVIEW WITH PLANNING BOARD (JULY 24, 2018)
- CONCEPTUAL MASTER PLAN REVIEW PROCESS:
 2. TECHNICAL REVIEW COMMITTEE REVIEW (AUGUST 15, 2018)
 3. CONSERVATION COMMISSION REVIEW (AUGUST 5, 2018)
 4. ECONOMIC DEVELOPMENT COMMITTEE REVIEW (AUGUST 6, 2018)
 5. TRANSPORTATION AND TRAFFIC REVIEW COMMITTEE REVIEW (AUGUST 20, 2018)
 6. BICYCLE AND PEDESTRIAN ADVISORY COMMITTEE REVIEW (AUGUST 20, 2018)
 7. PLANNING BOARD APPROVAL AND POSITIVE RECOMMENDATION TO THE ZONING BOARD OF REVIEW FOR SPECIAL USE PERMIT (SEPTEMBER 25, 2018)
8. SPECIAL USE PERMIT FOR DRIVE-THRU GRANTED BY ZONING BOARD OF REVIEW (NOVEMBER 28, 2018)
9. RIDEM FOR A GROUNDWATER DISCHARGE PERMIT (WETLANDS APP. NO. 19-0028 & GD/UIC NO. 001895)
10. RIDEM FOR REMEDIAL ACTION WORK PLAN
11. RIDOT FOR PHYSICAL ALTERATION PERMIT (PERMIT # 190215-A)
12. DEPARTMENT OF PUBLIC WORKS (STORMWATER & SEWER)
13. WATER AUTHORITY
14. SOIL EROSION
15. TECHNICAL REVIEW COMMITTEE - PRELIMINARY PLAN REVIEW (FEBRUARY 13, 2019)
16. PLANNING BOARD APPROVAL - PRELIMINARY PLAN REVIEW (MAY 30, 2019)
17. FINAL PLAN APPROVAL (AUGUST 26, 2019)