



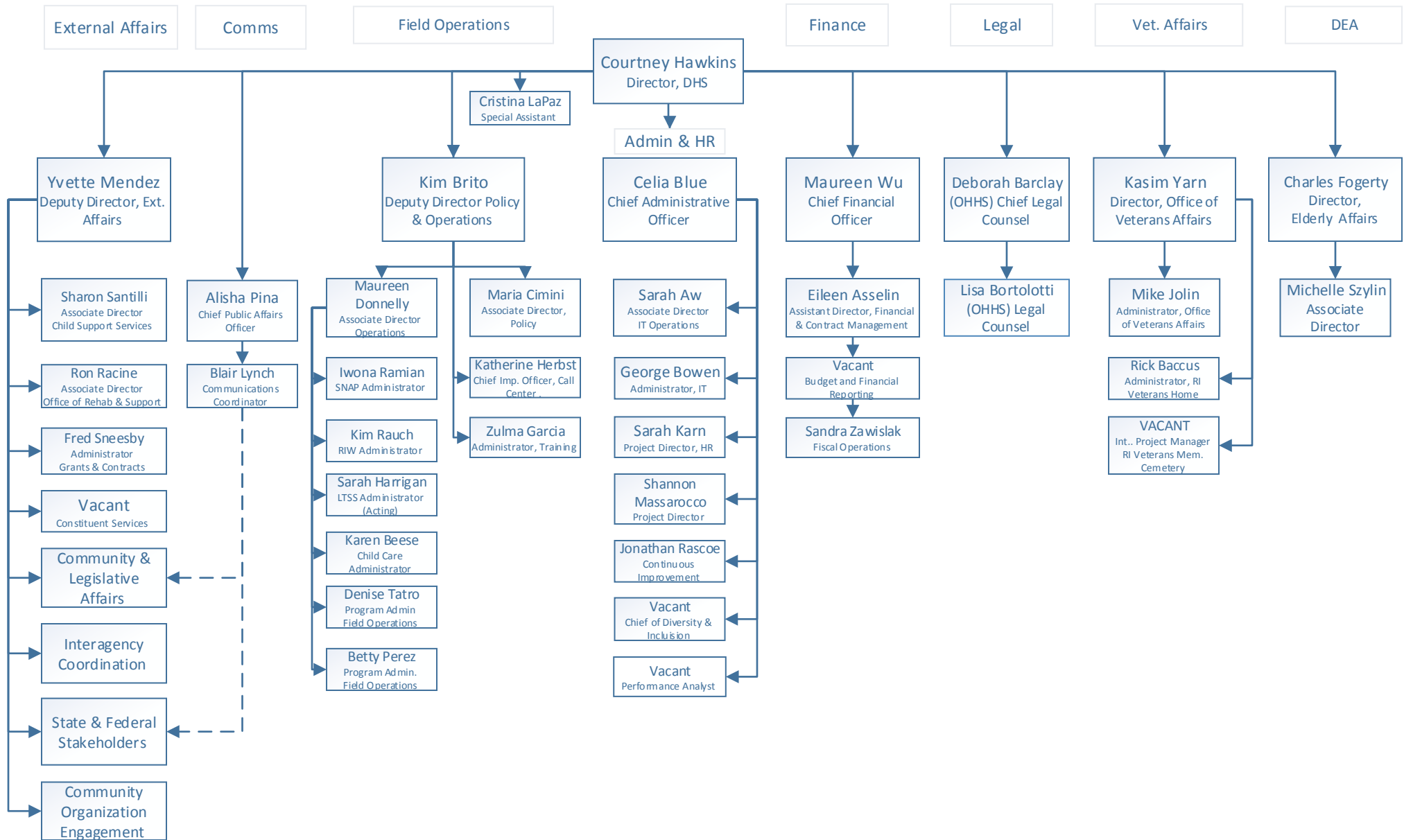
# DHS Executive Level Organizational Chart

## Table of Contents

(Draft)

1. Department of Human Services (DHS)
2. External Affairs (EA)
3. Grants & Contract Management
4. Office of Rehabilitative Services (ORS)
5. Vocational Rehabilitation (ORS)
6. Services for the Blind and Visually Impaired (ORS)
7. Disability Determination (ORS)
8. Child Support Services (OCS)
9. Child Support - Front-End Delivery (OCS)
10. Child Support - Support Staff (OCS)
11. Communications (Coms)
12. Policy & Operations (Ops)
13. Supplemental Nutrition Assistance Program (SNAP)
14. Providence Office (Ops)
15. Pawtucket Office (Ops)
16. Warwick Office (Ops)
17. Woonsocket Office (Ops)
18. Wakefield Office (Ops)
19. Middletown Office (OPS)
20. Long Term Care Services and Support (LTSS)
21. Economic Support Services Unit (ESSU)
22. Child Care Assistance Program (CCAP)
23. Call Center (Policy)
24. Satellite Offices (Ops)
25. Administration (Admin)
26. Information Technology System Services Support – IT (Admin)
27. Staff Development Unit – SDU (Admin)
28. Finance & Claims, Collections and Recovery Unit CCRU – (Finance)

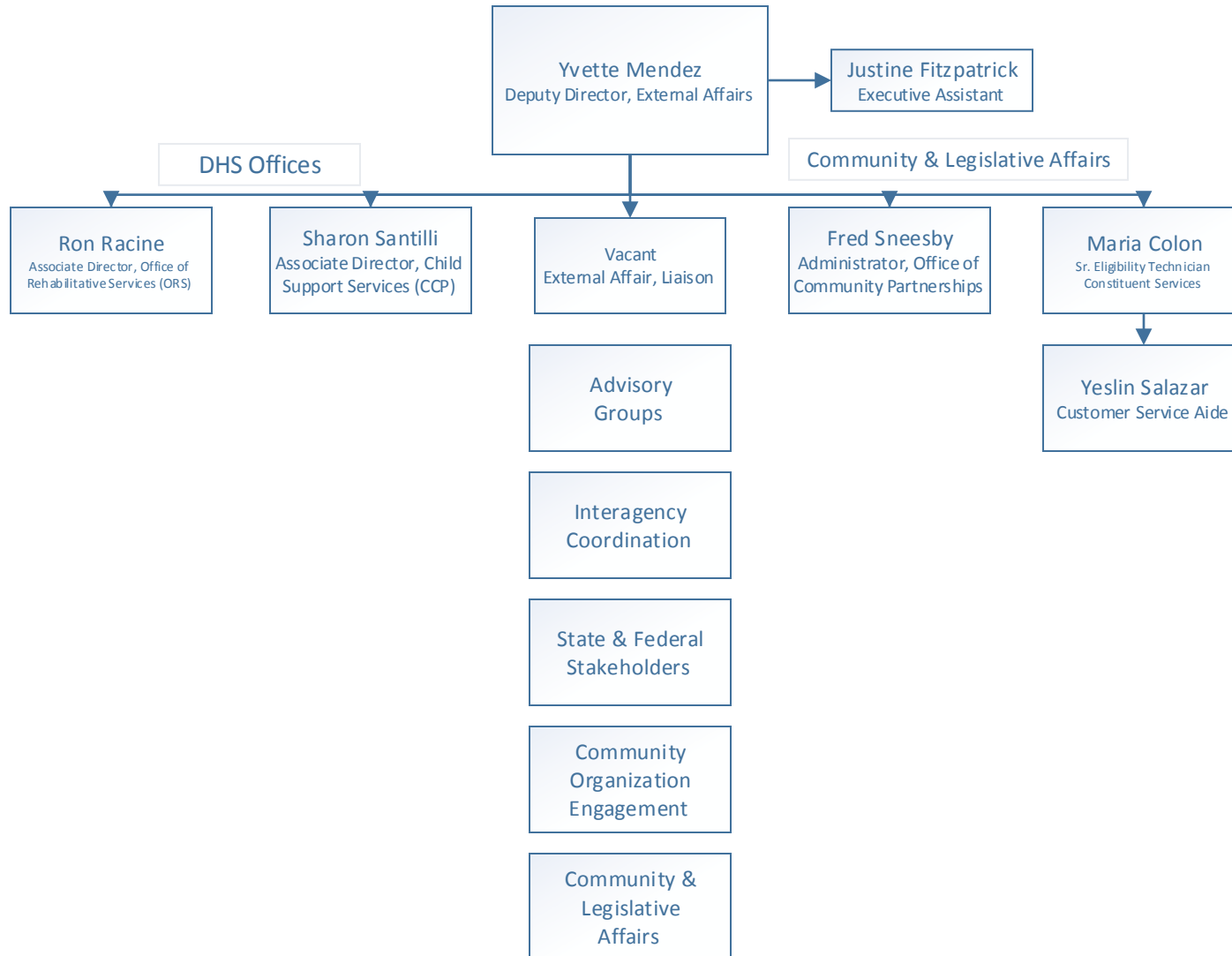
29. Legal Counsel (Legal)



(Draft)

Department of Human Services  
Organizational Chart  
Created: 9-19-2017  
Revised:

(Draft)

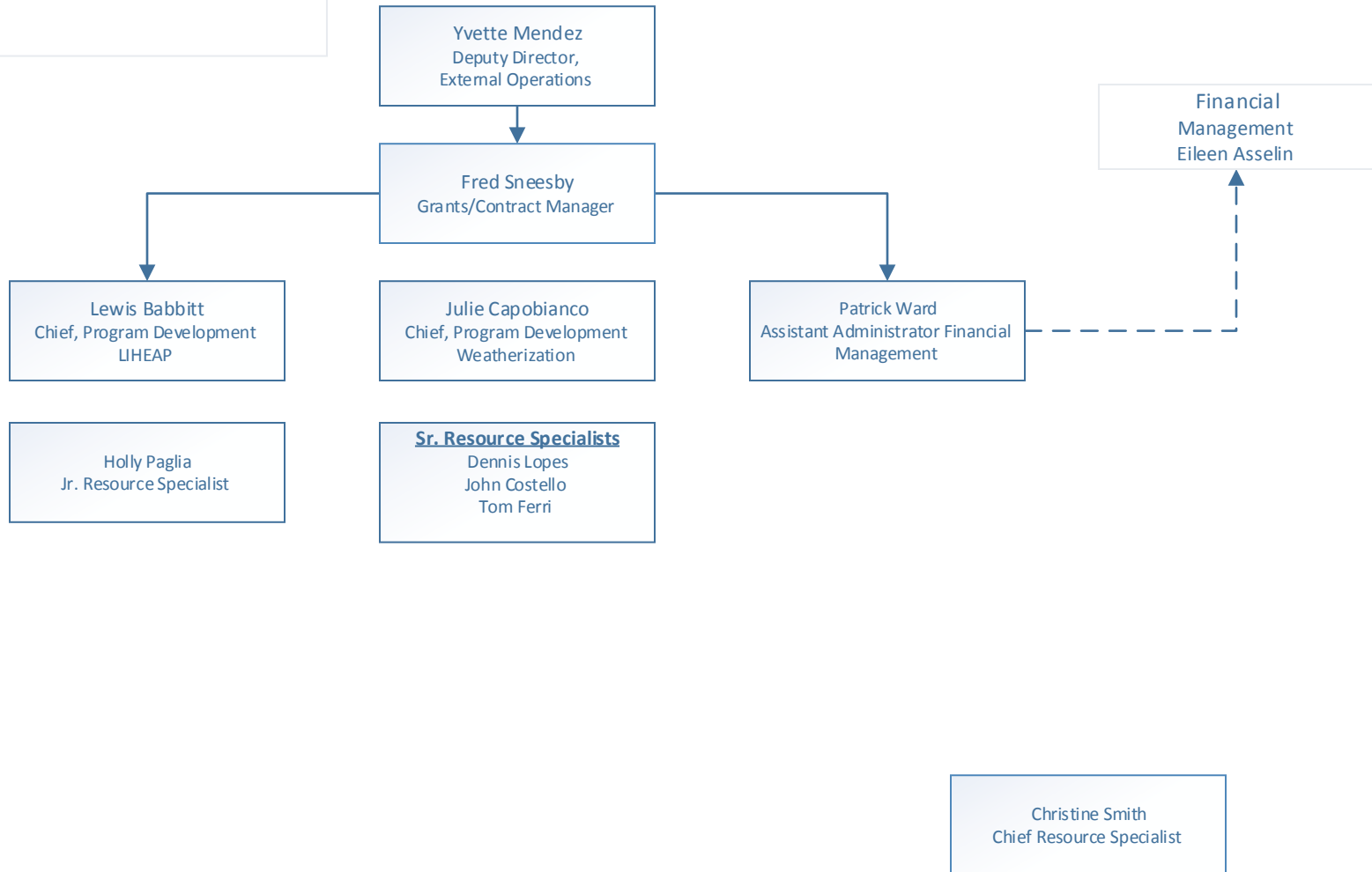


DHS Grants and Contract Management Organizational Chart

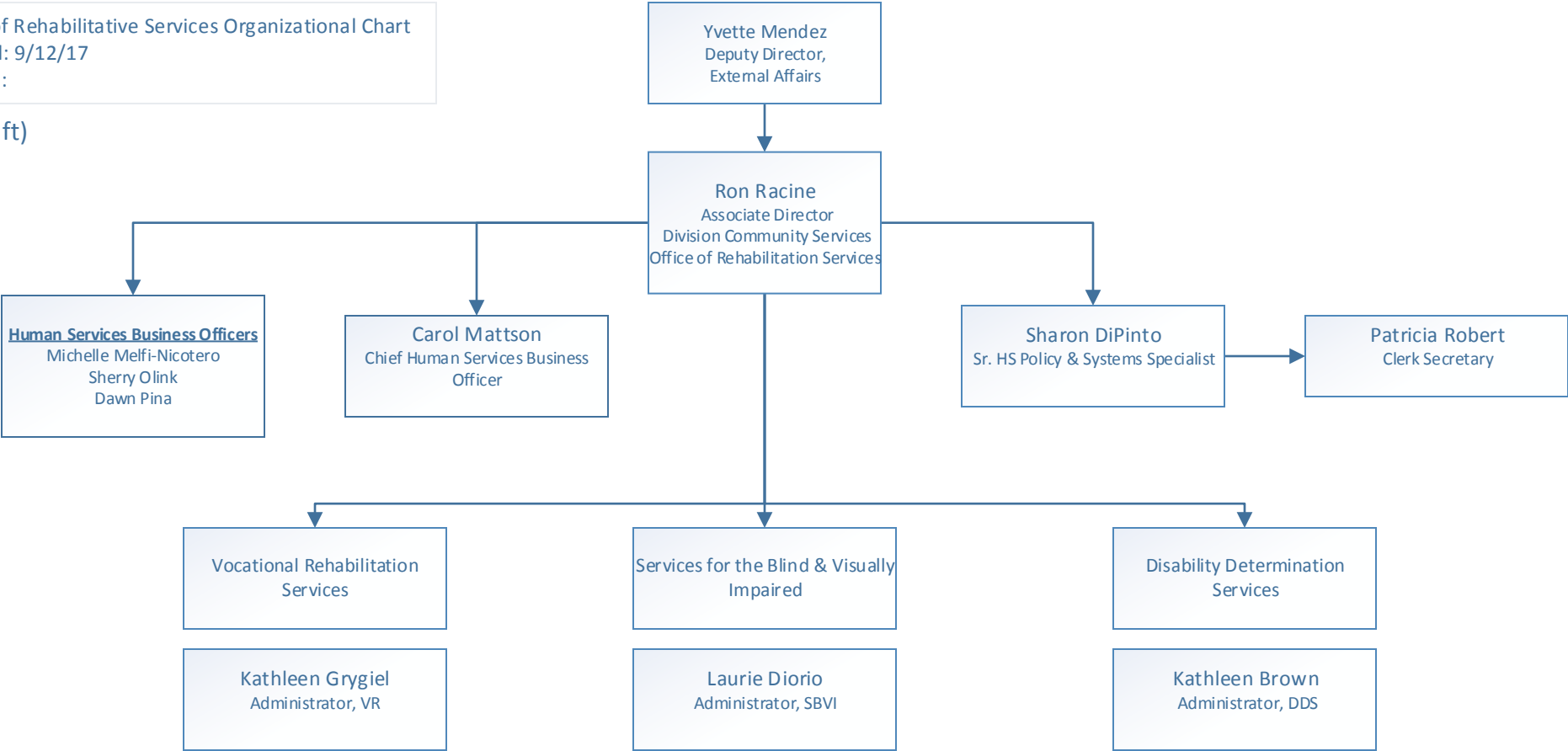
Created: 9-14-2017

Revised:

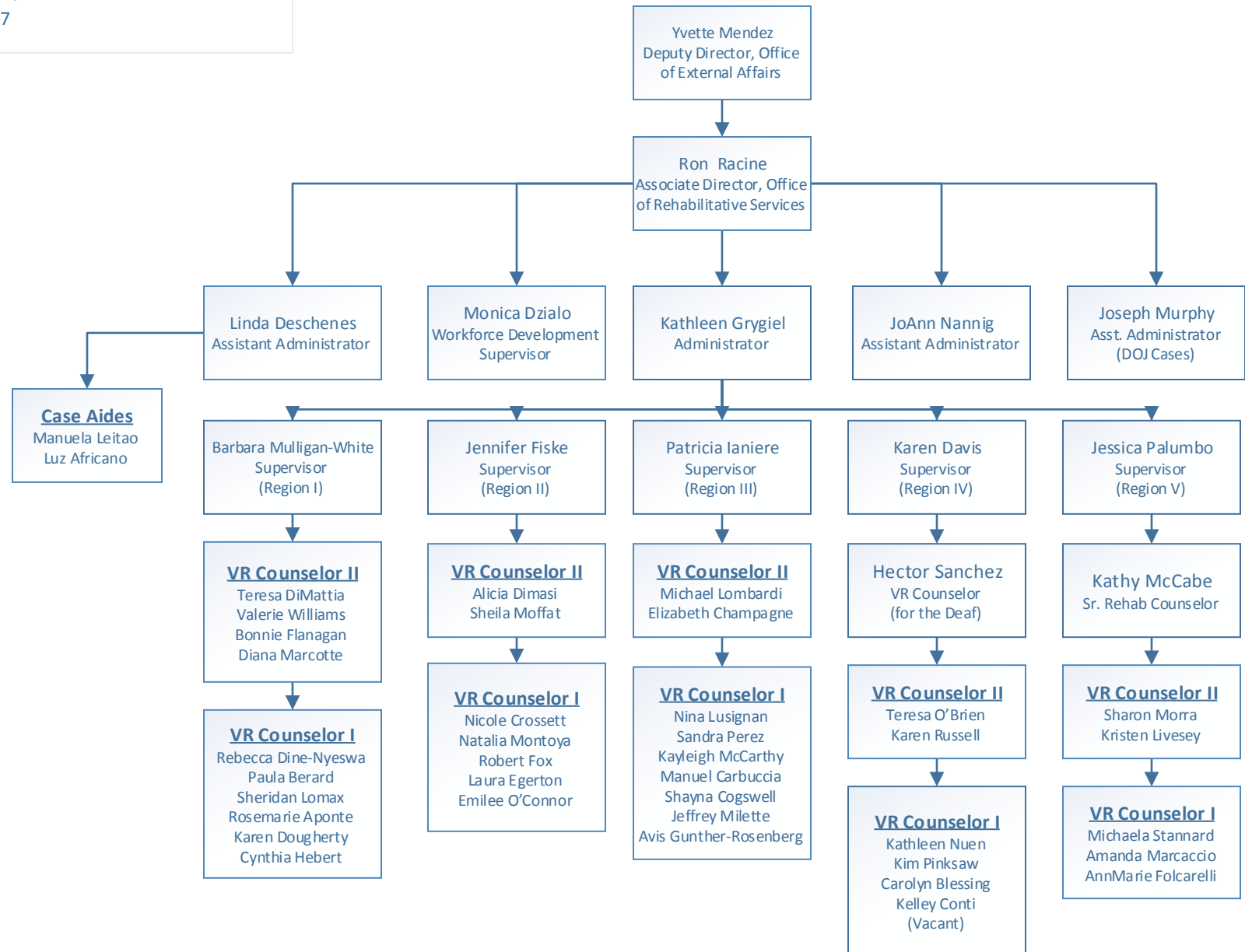
(Draft)



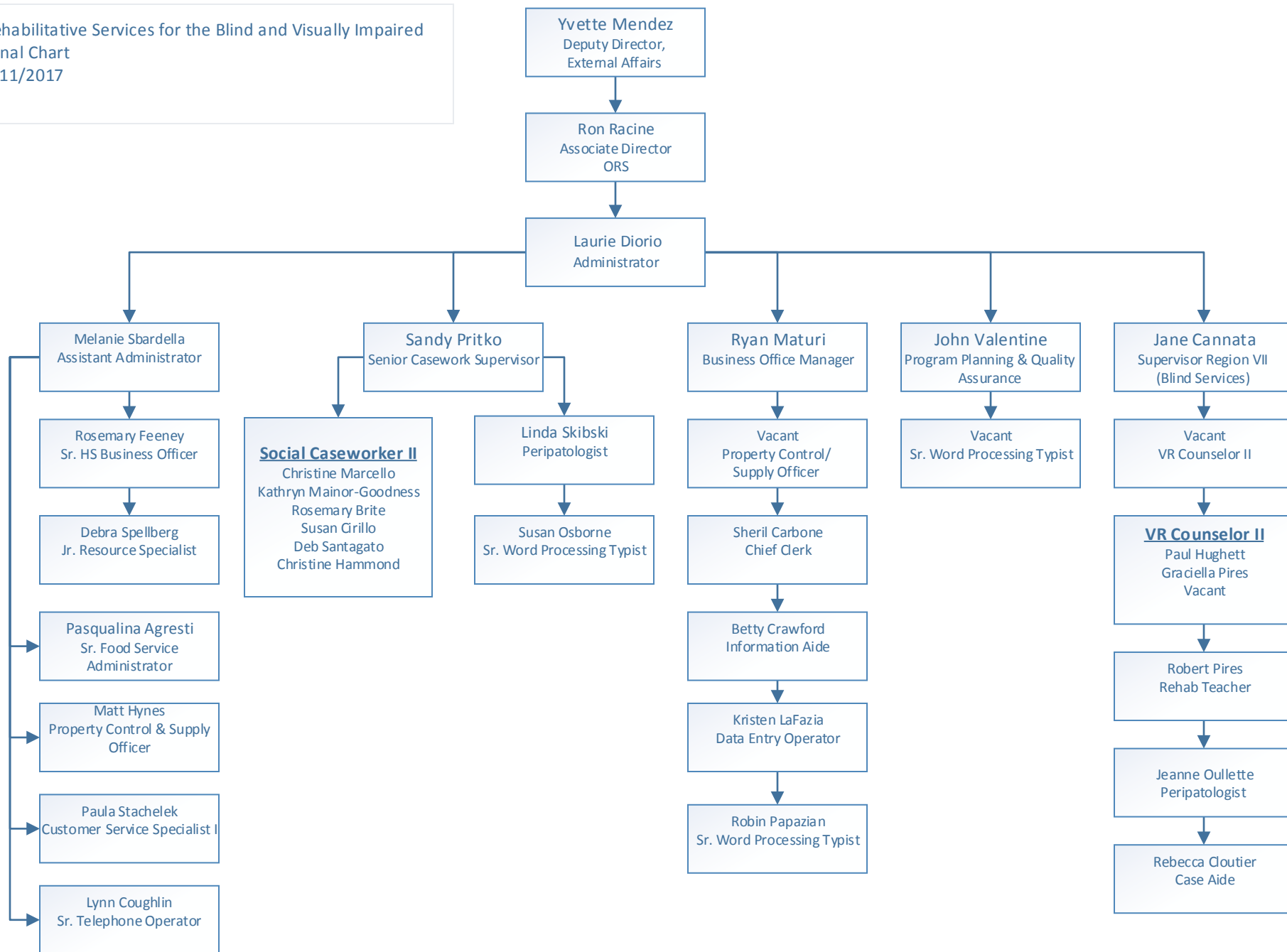
(Draft)



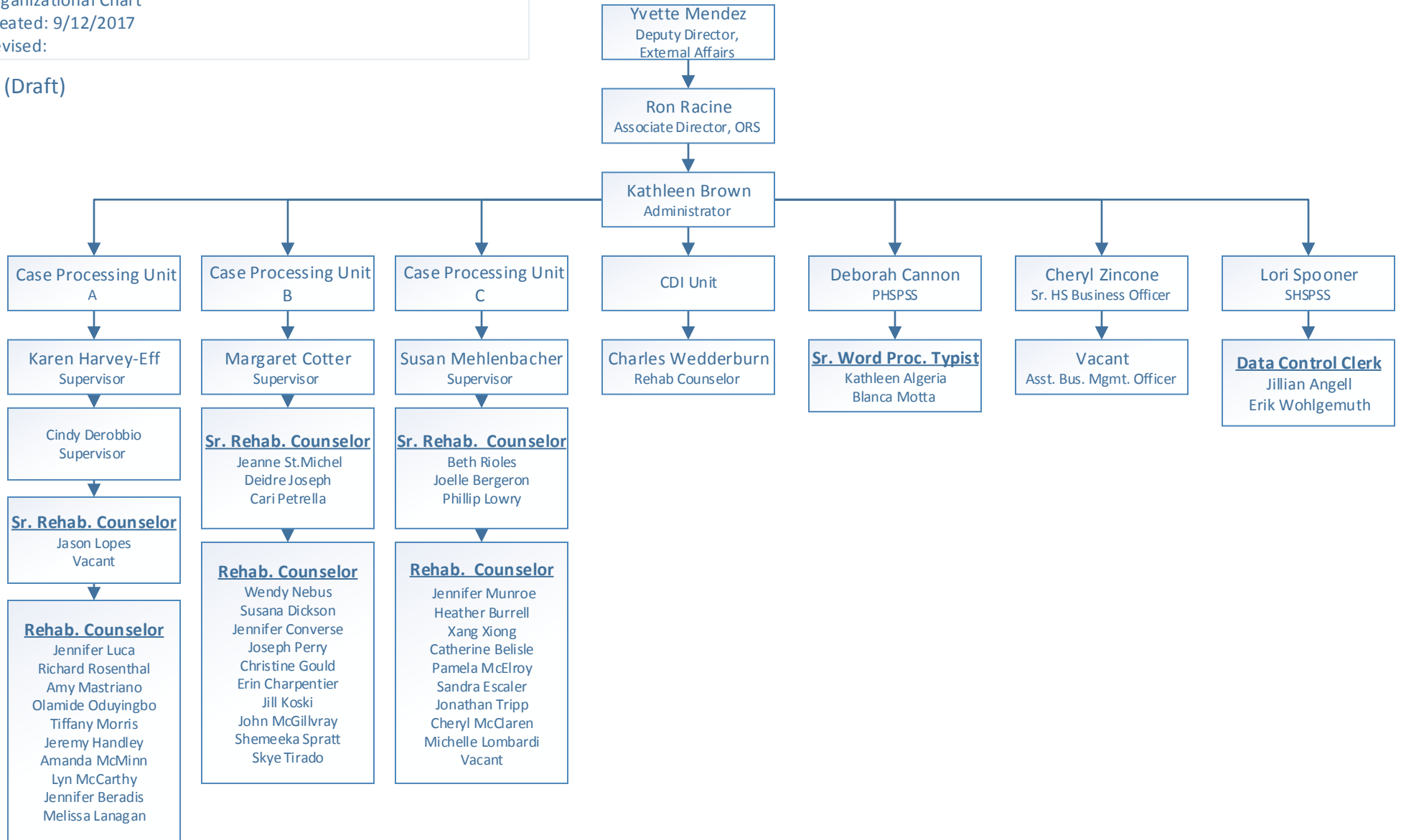
(Draft)



(Draft)

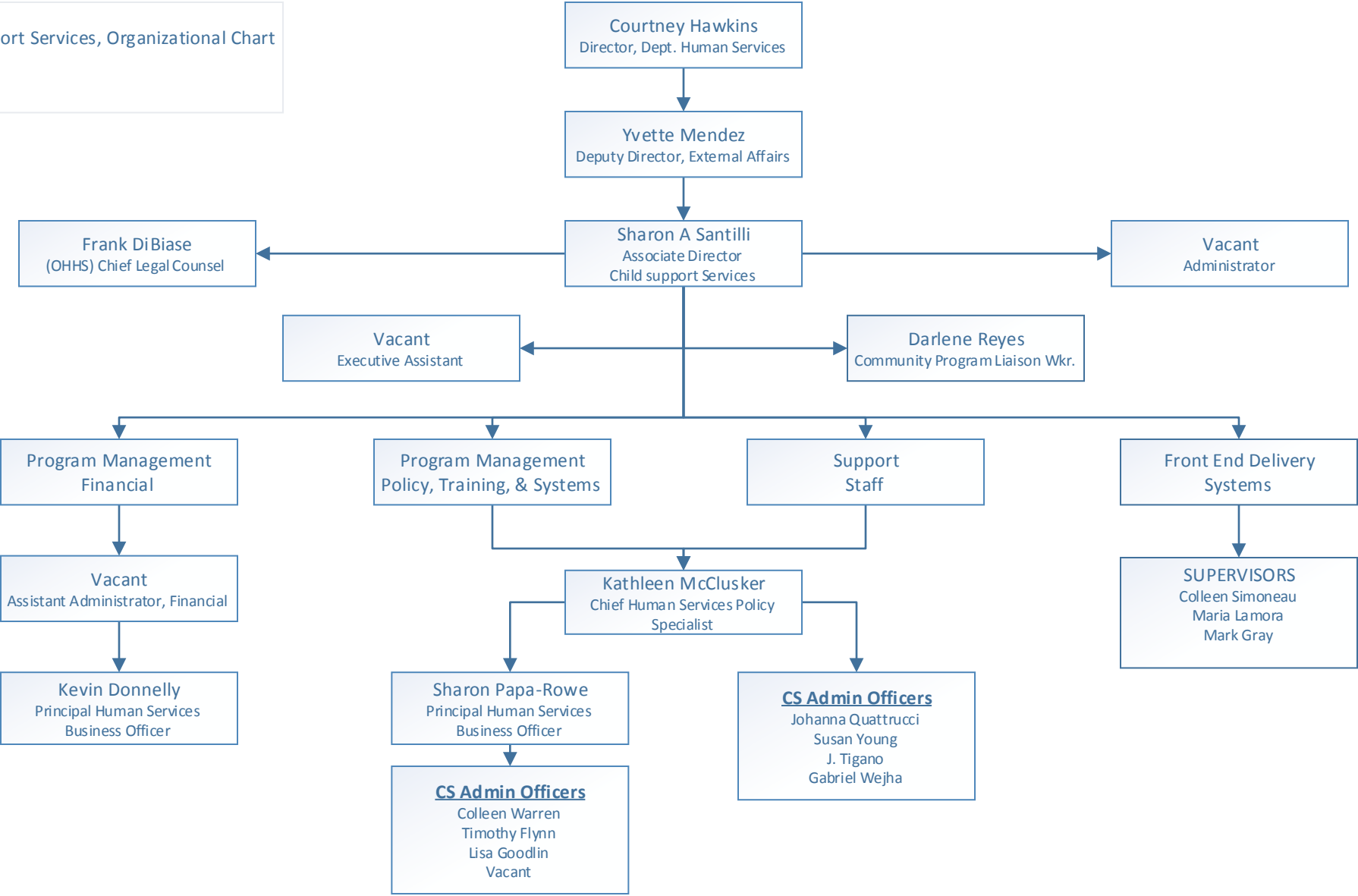


(Draft)

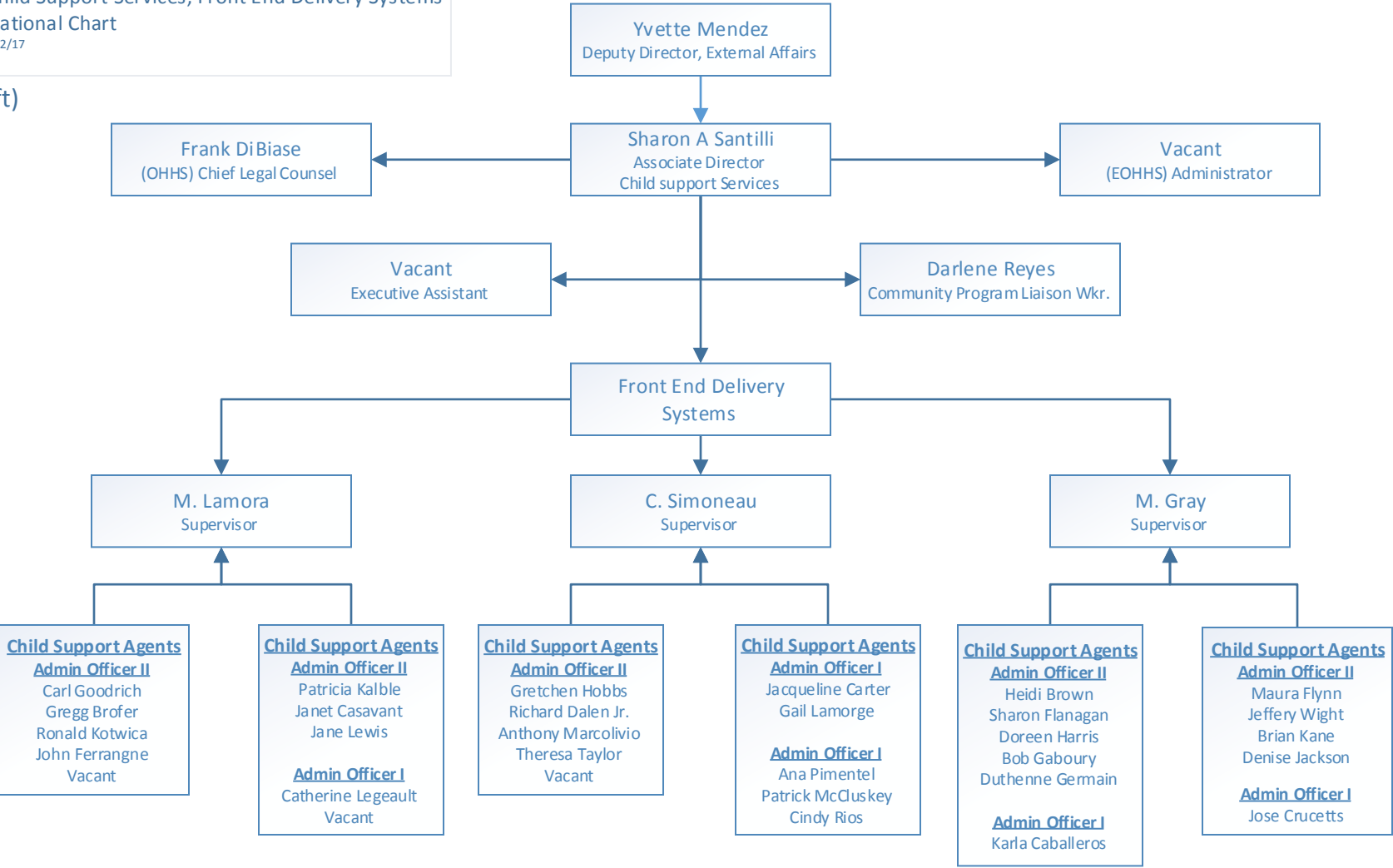




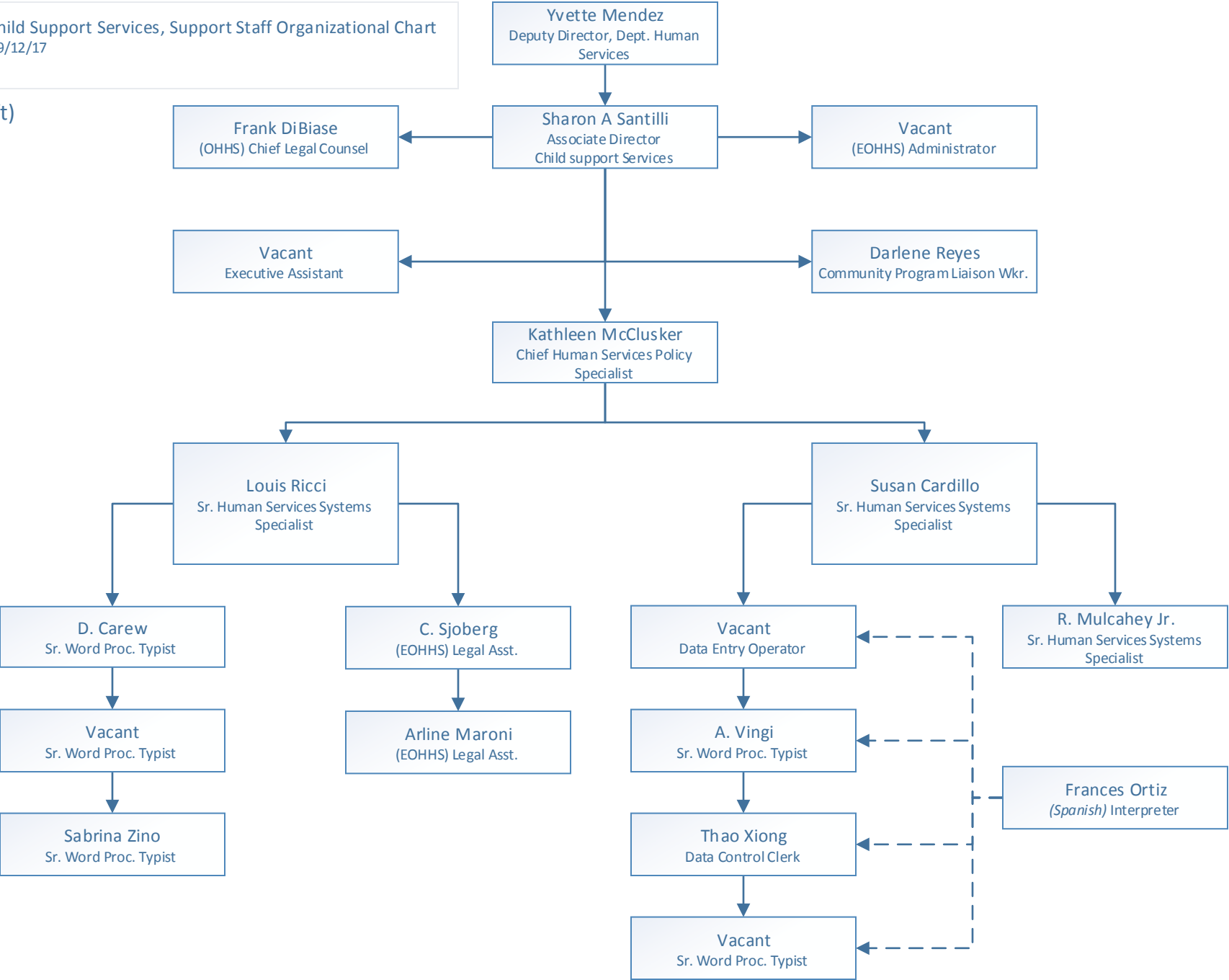
(Draft)



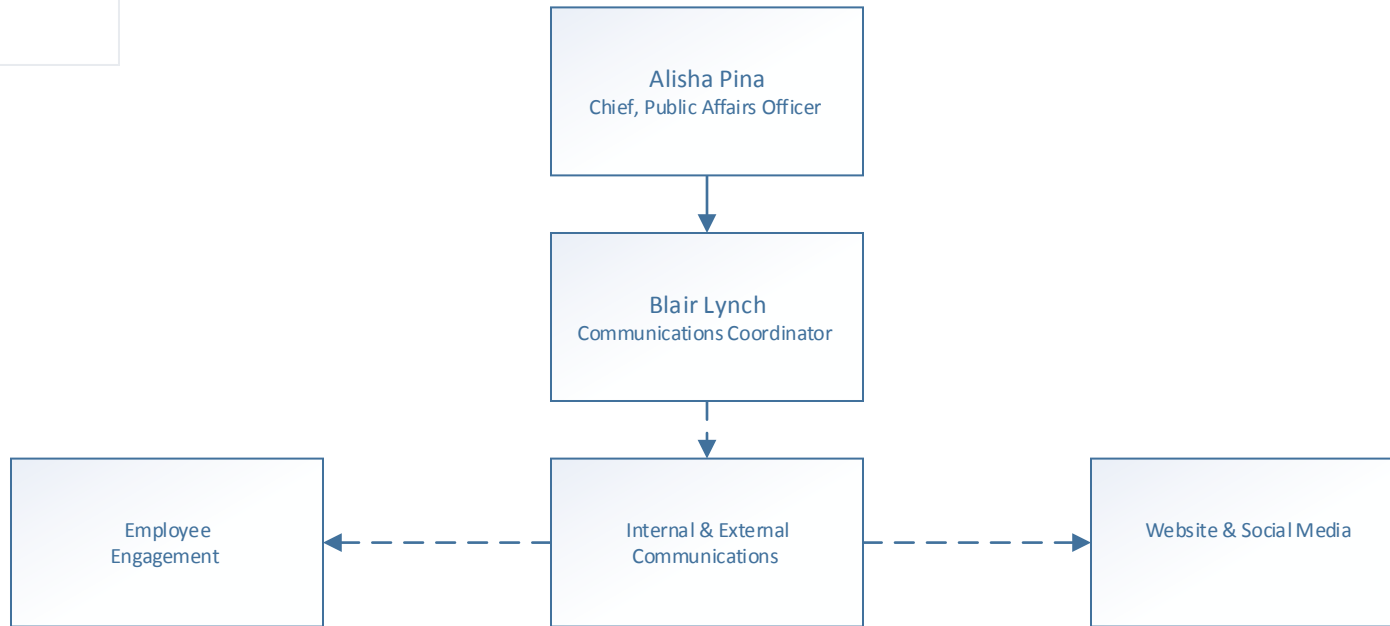
(Draft)



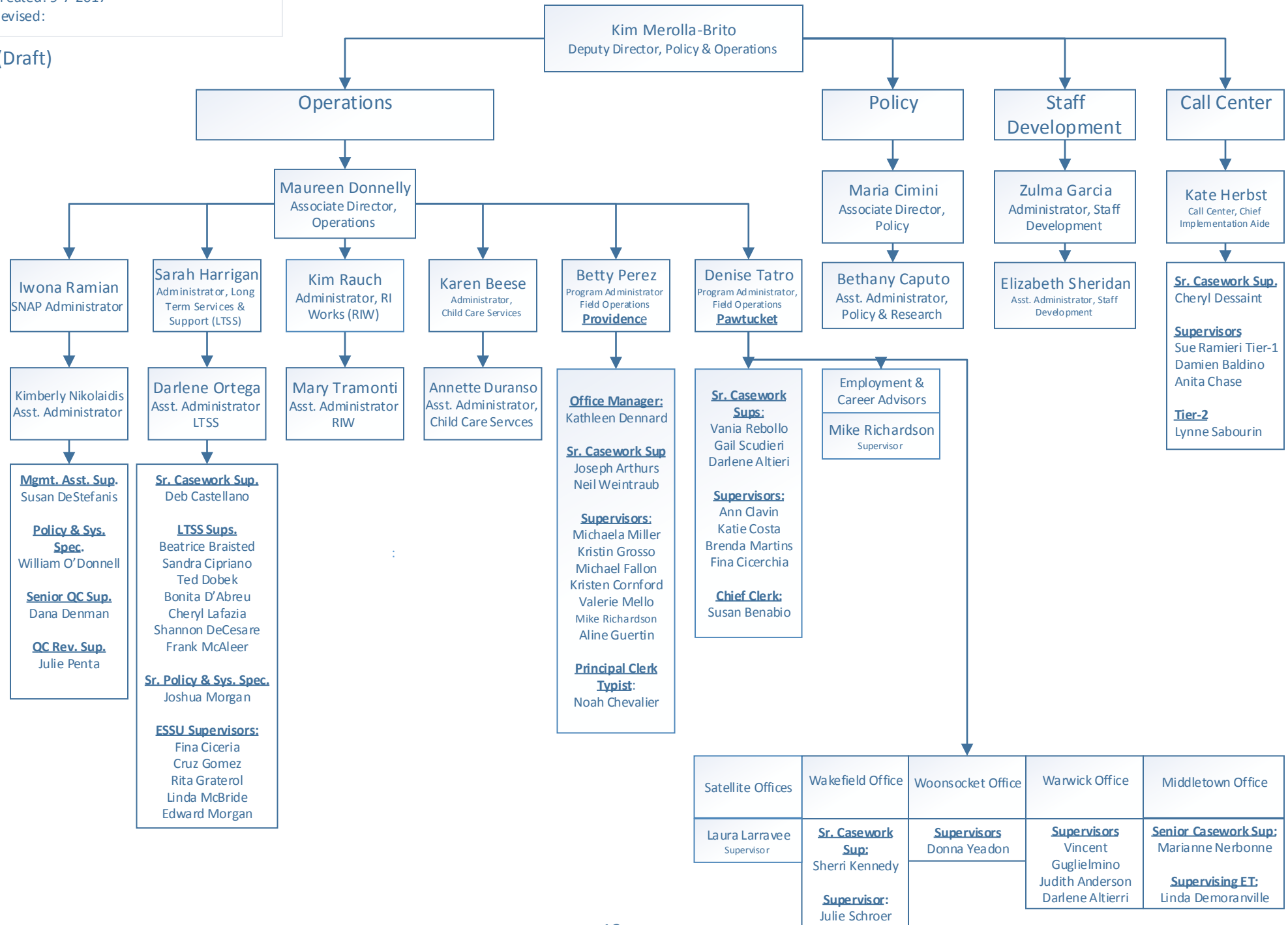
(Draft)



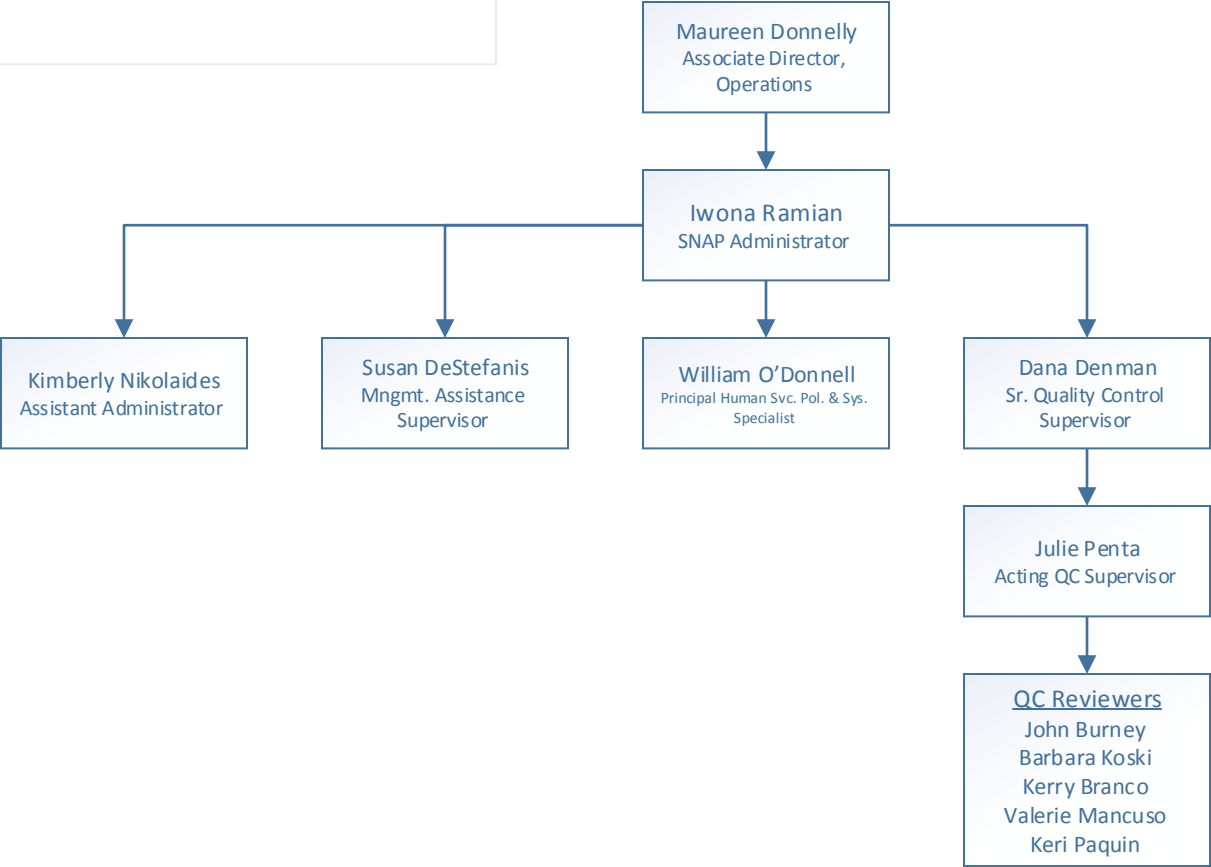
(Draft)



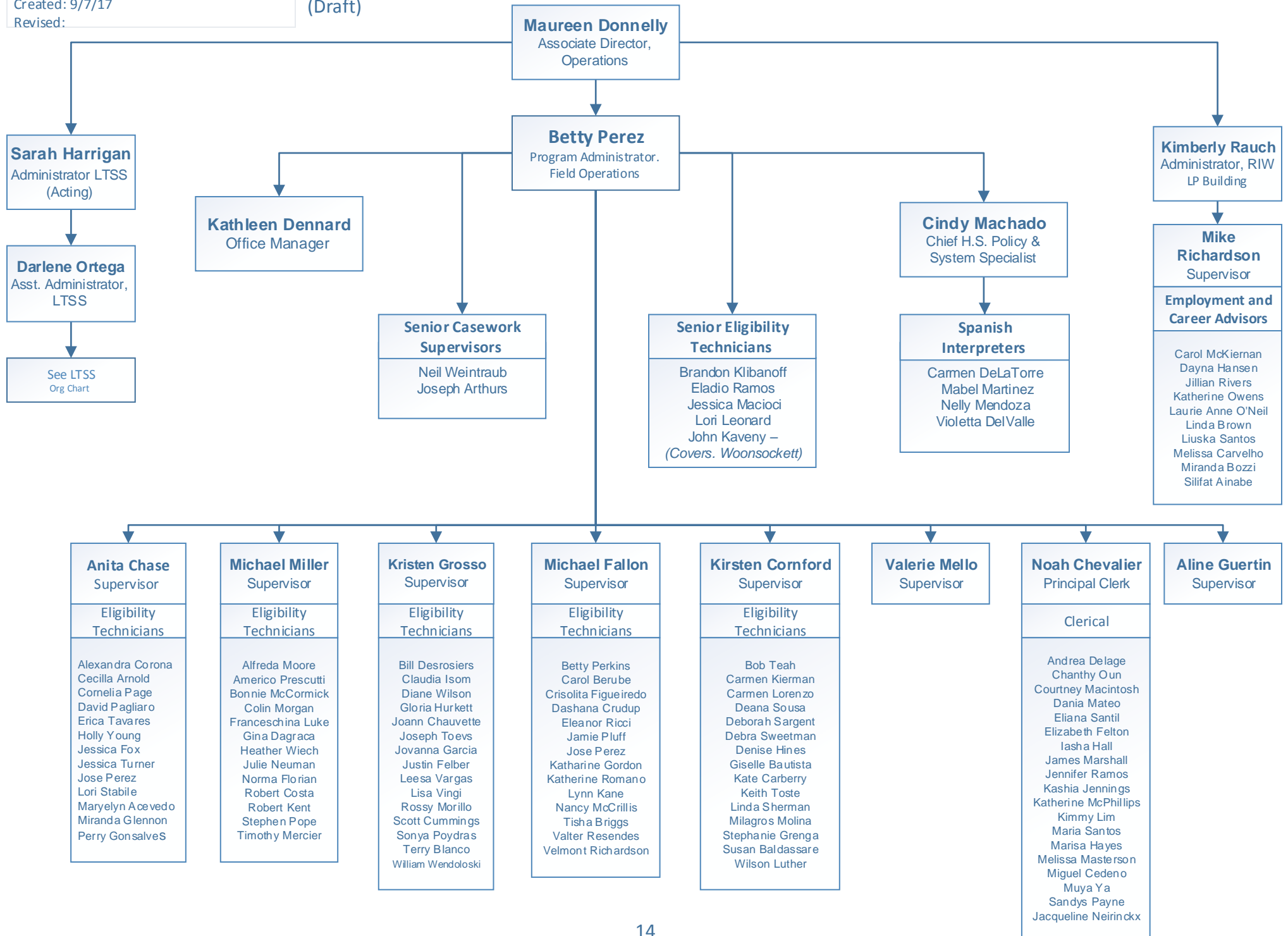
(Draft)



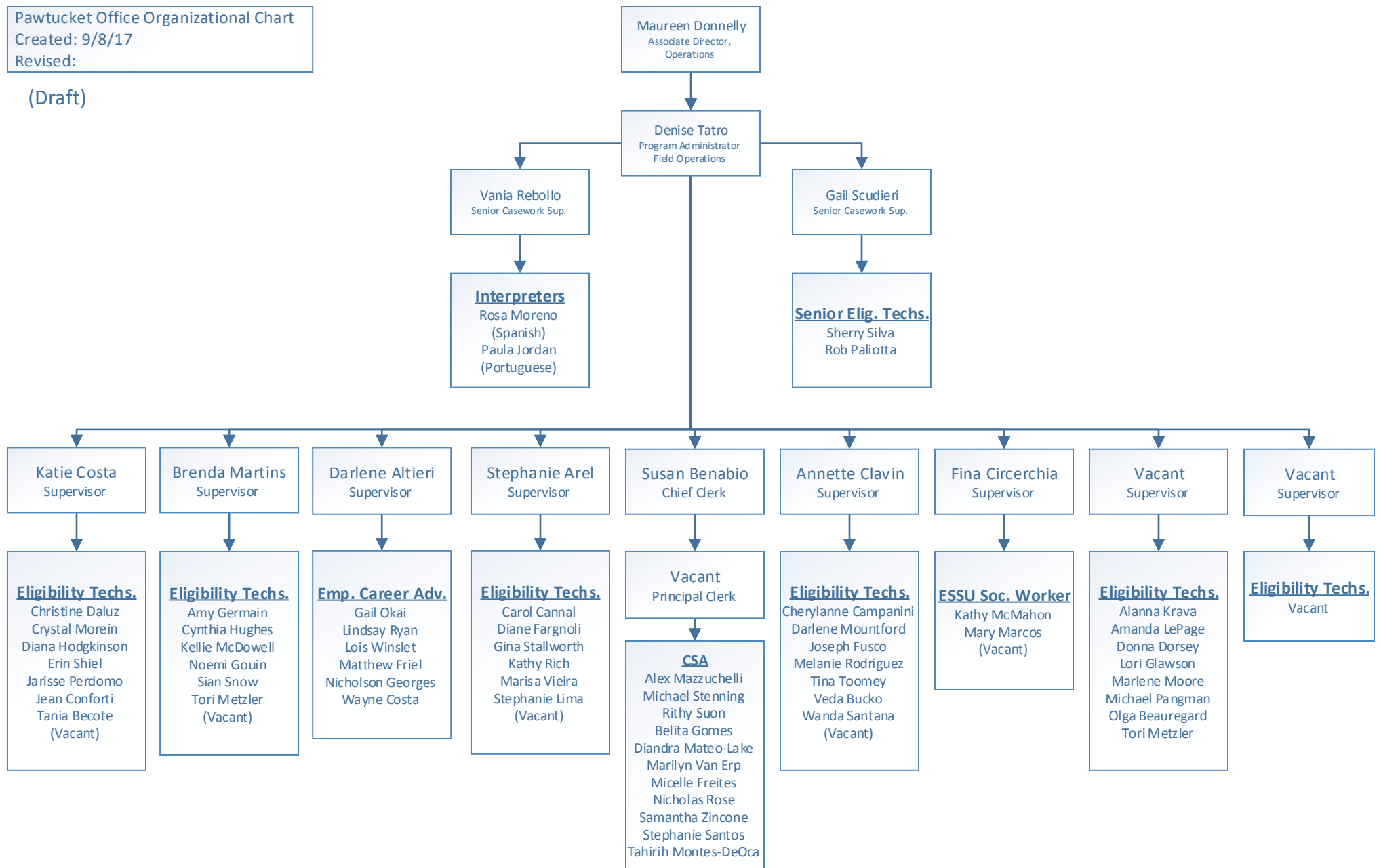
(Draft)



(Draft)

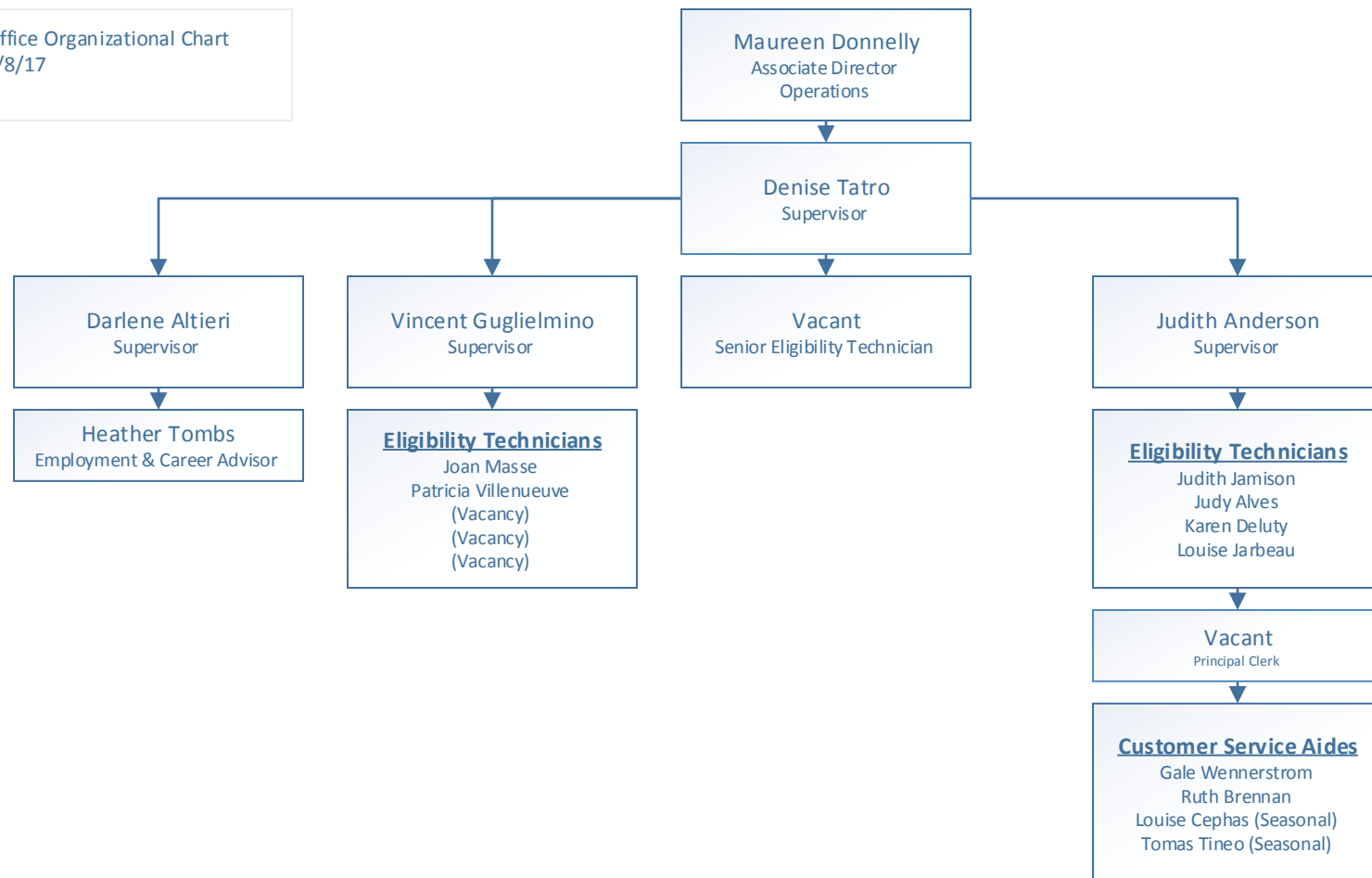


(Draft)

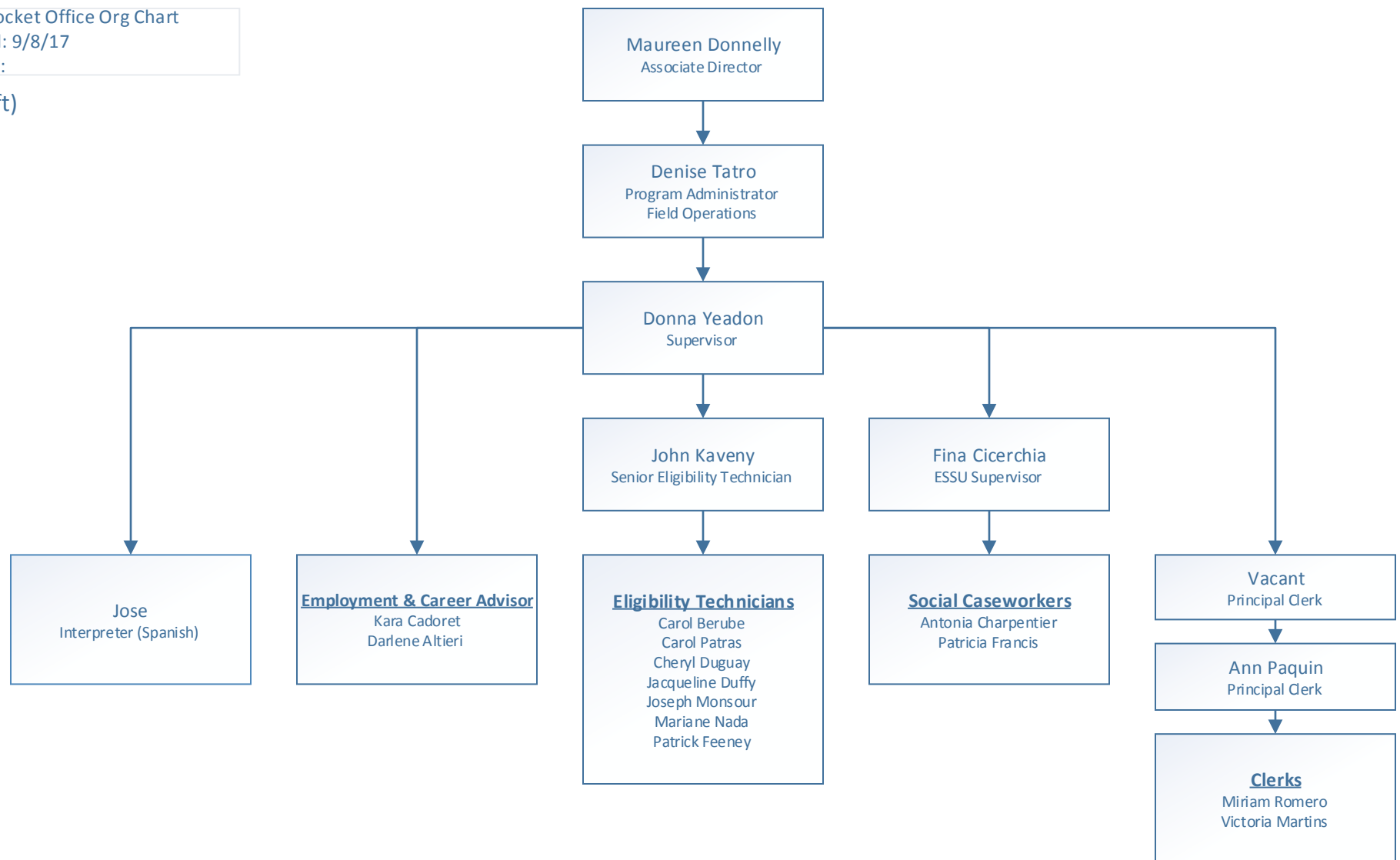




(Draft)



(Draft)

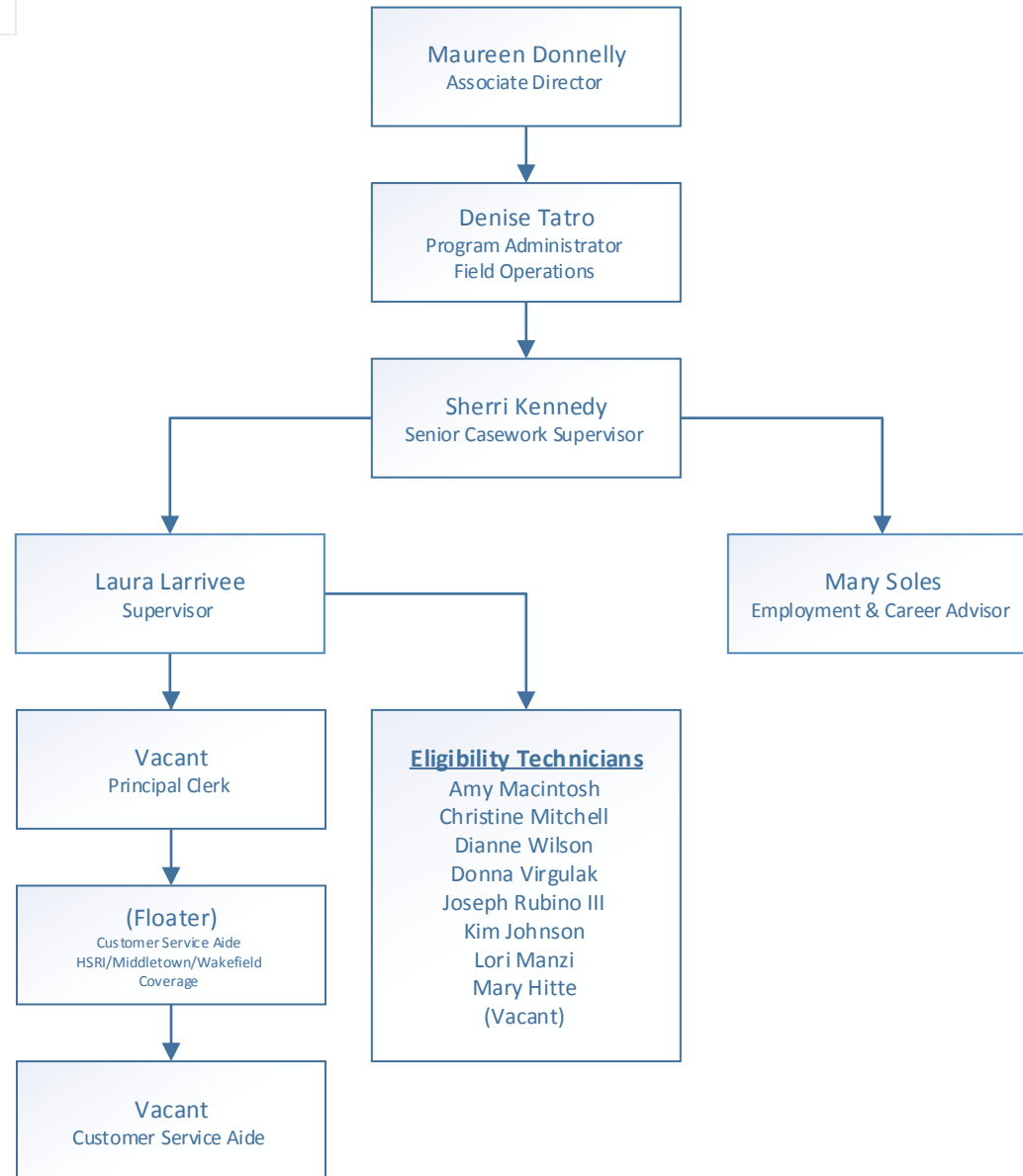


Wakefield Office Organizational Chart

Created: 9/8/17

Revised:

(Draft)

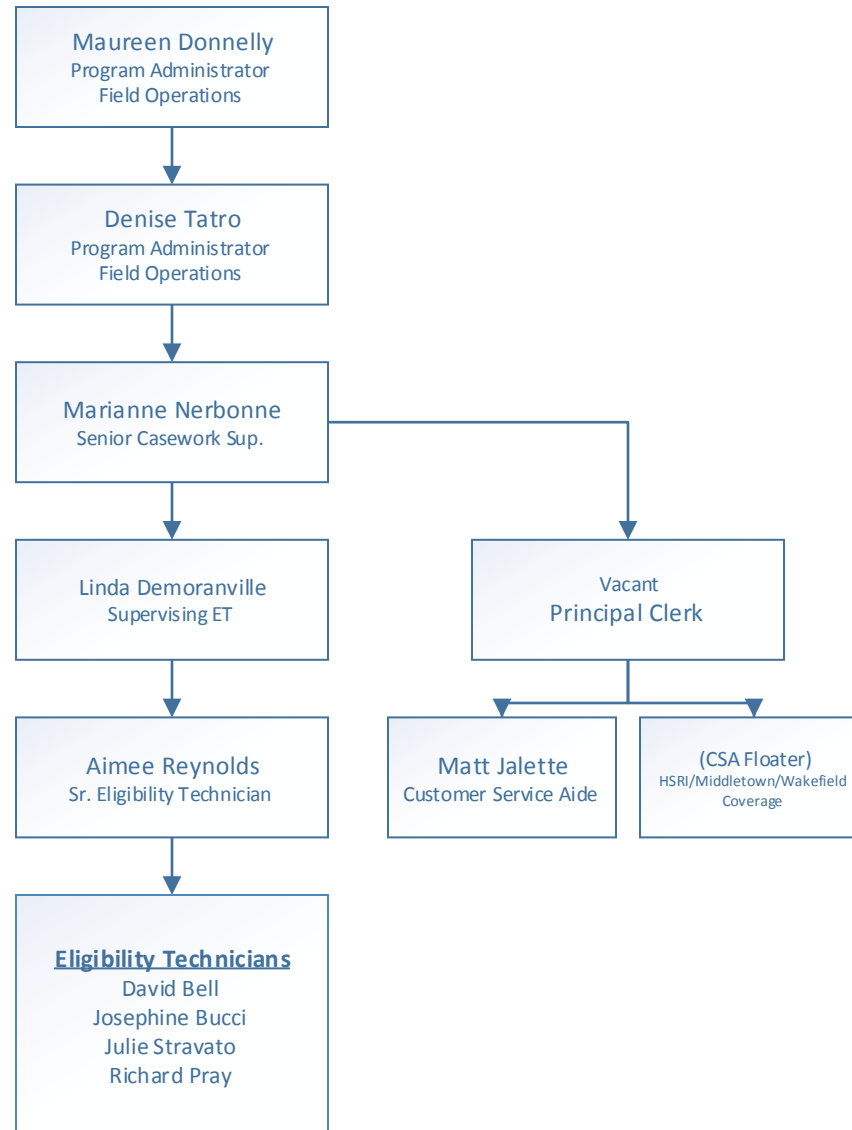


Middletown Office Organizational. Chart

Created: 9/8/17

Revised:

(Draft)

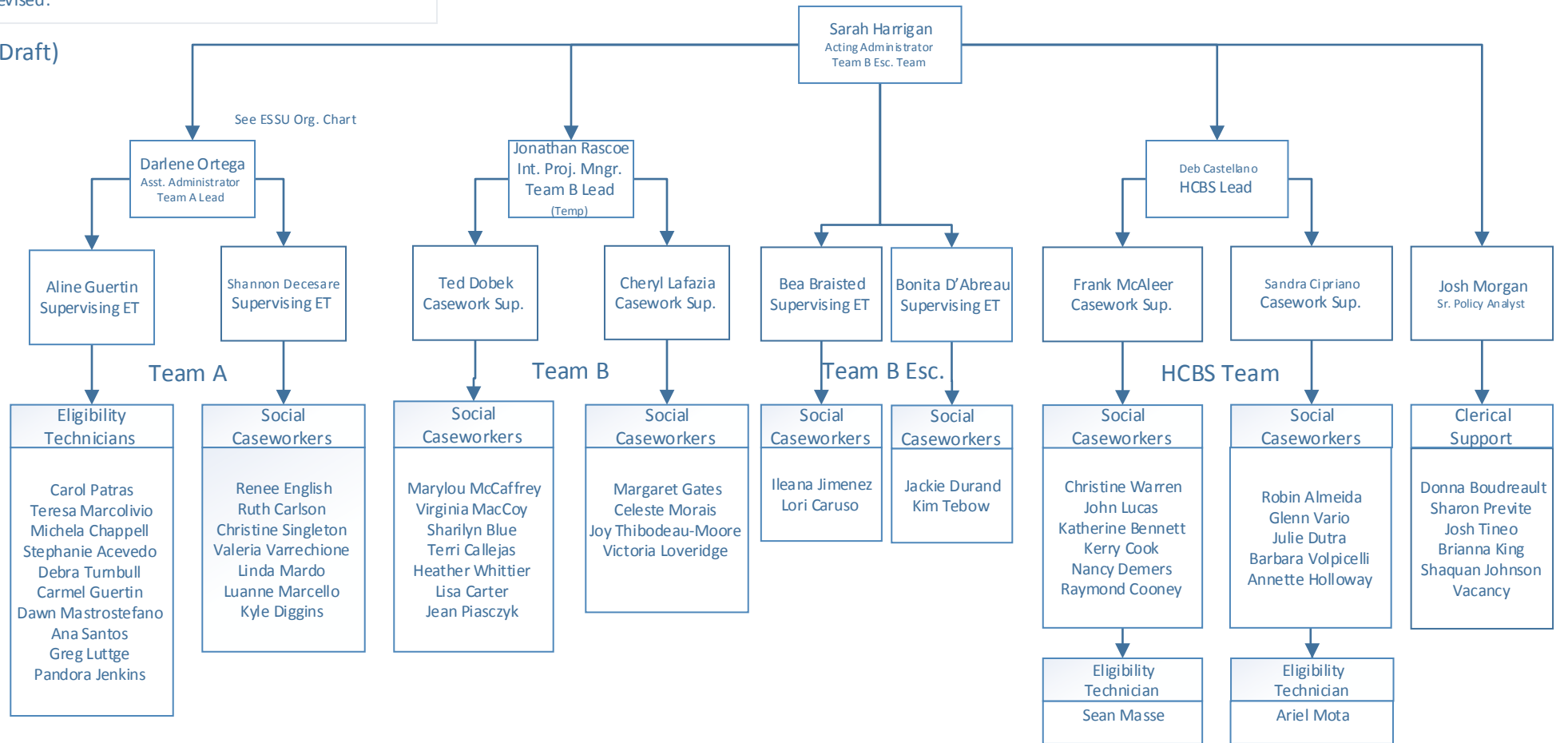


# Long Term Care Services & Support Organizational Chart

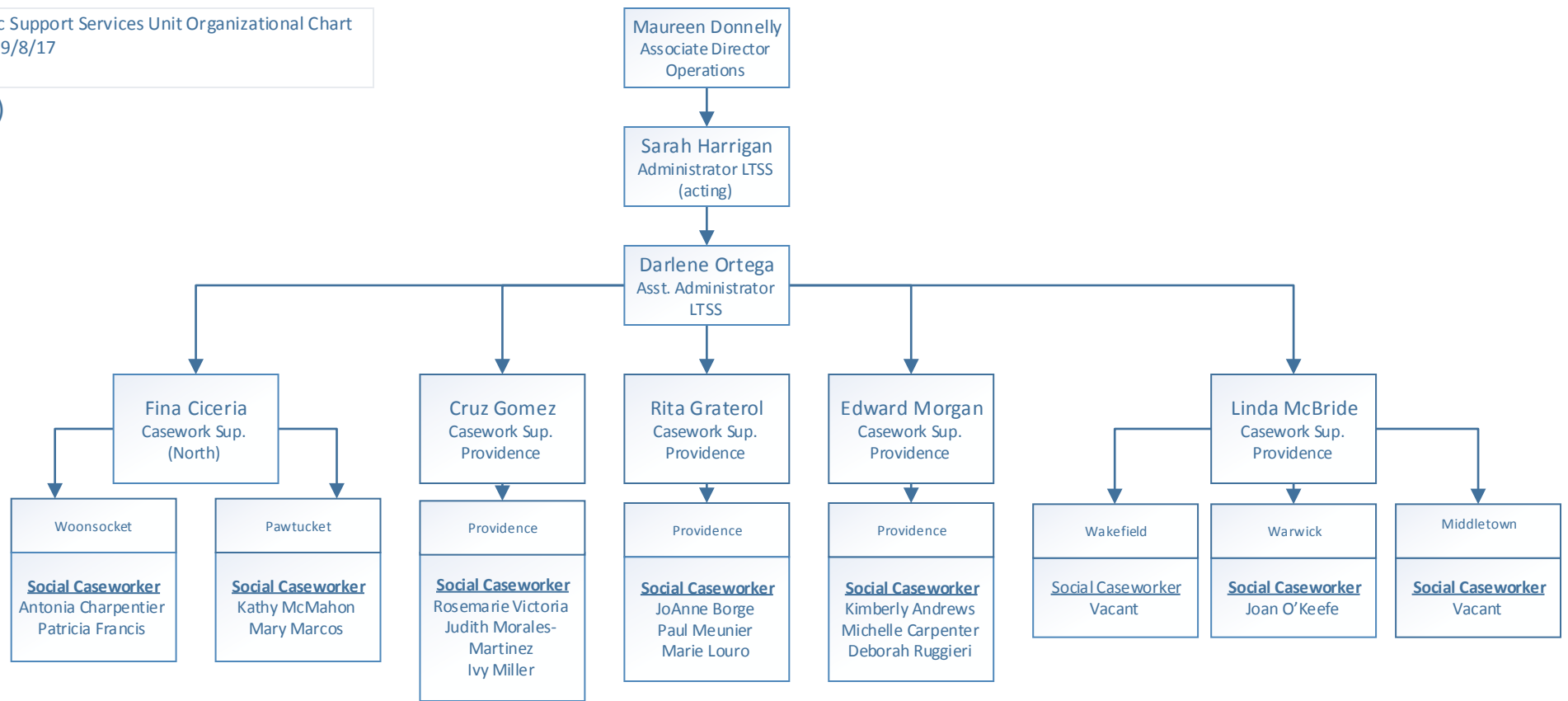
Created: 9/8/17

Revised:

(Draft)



(Draft)

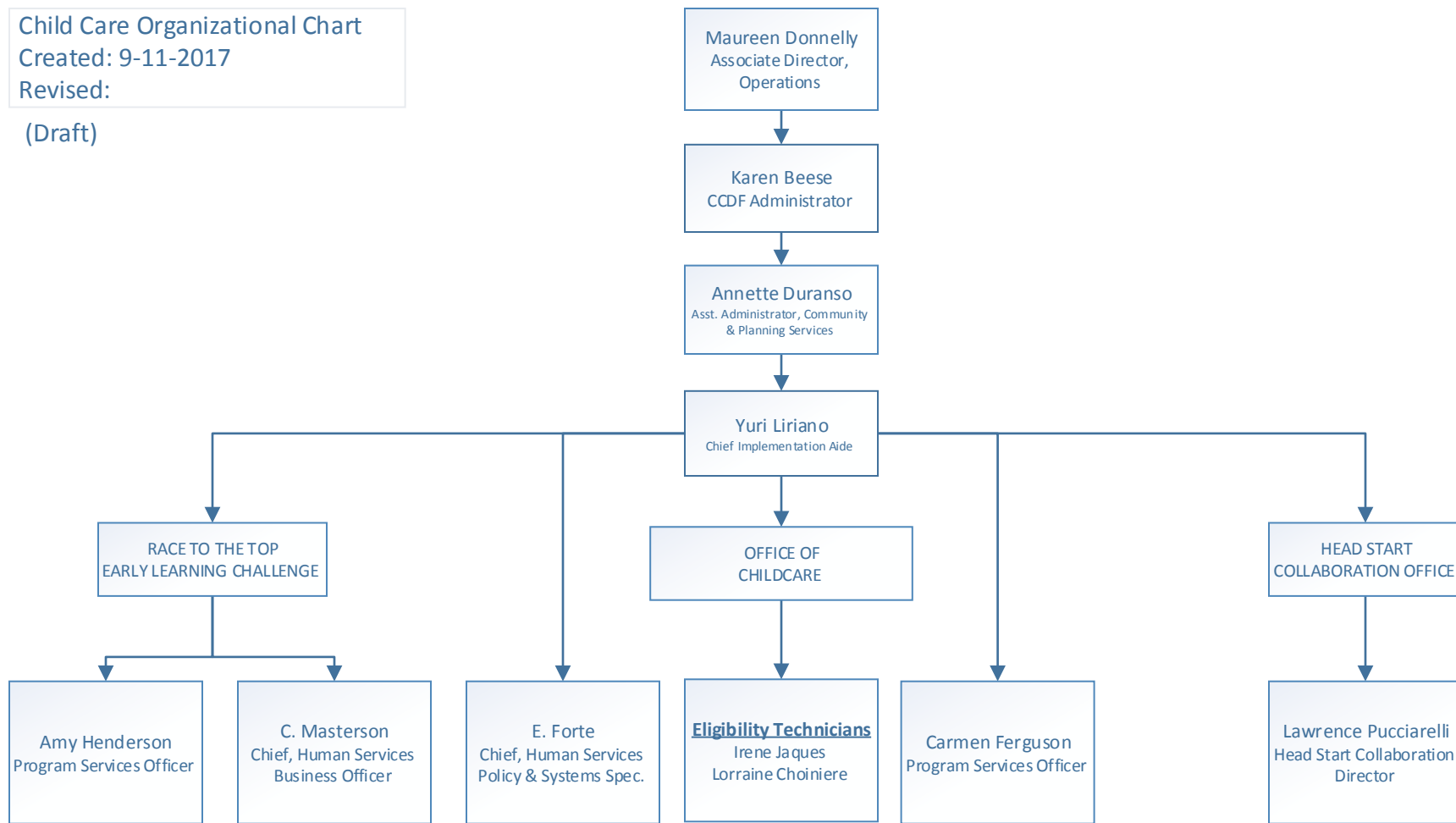


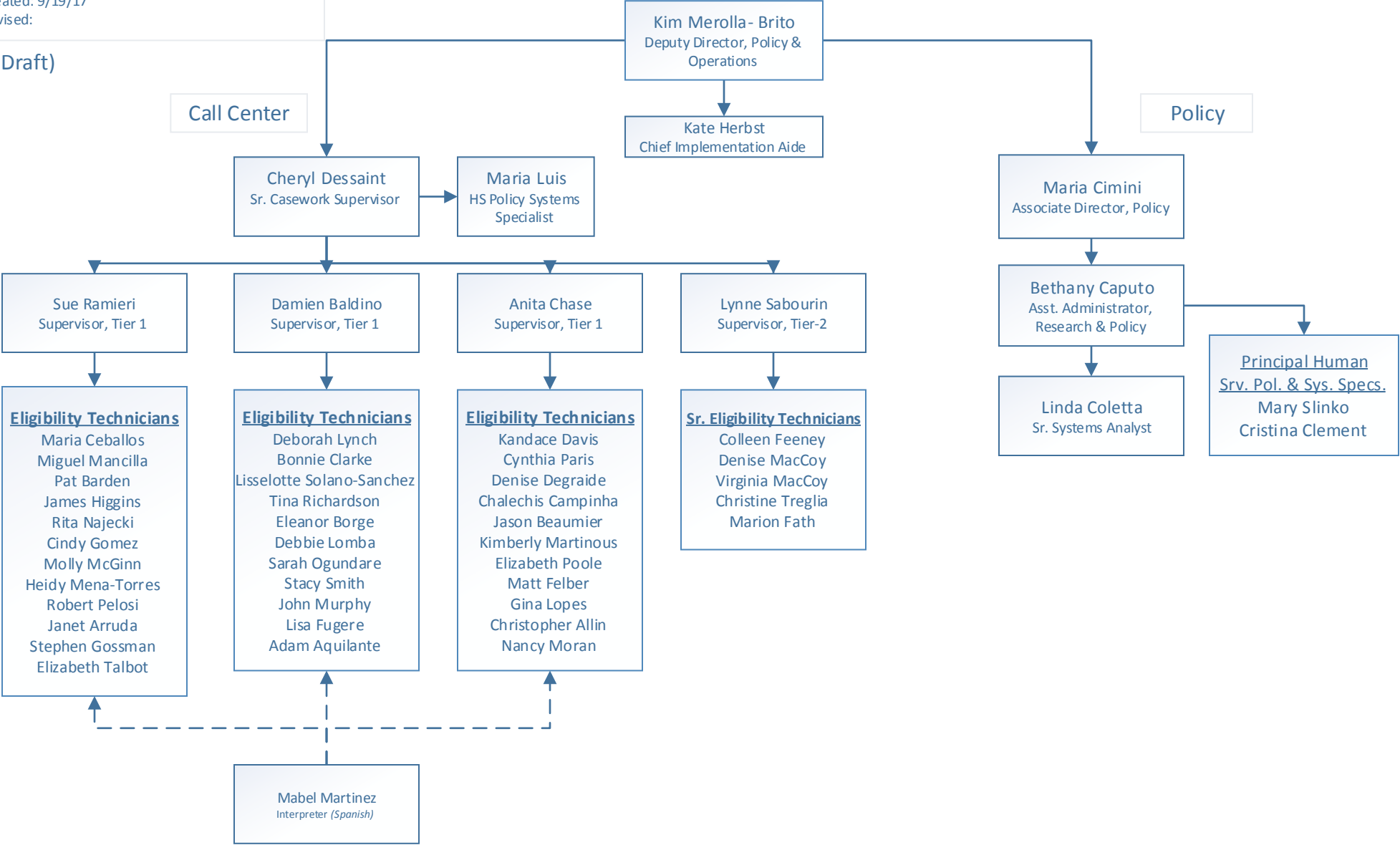
# Child Care Organizational Chart

Created: 9-11-2017

Revised:

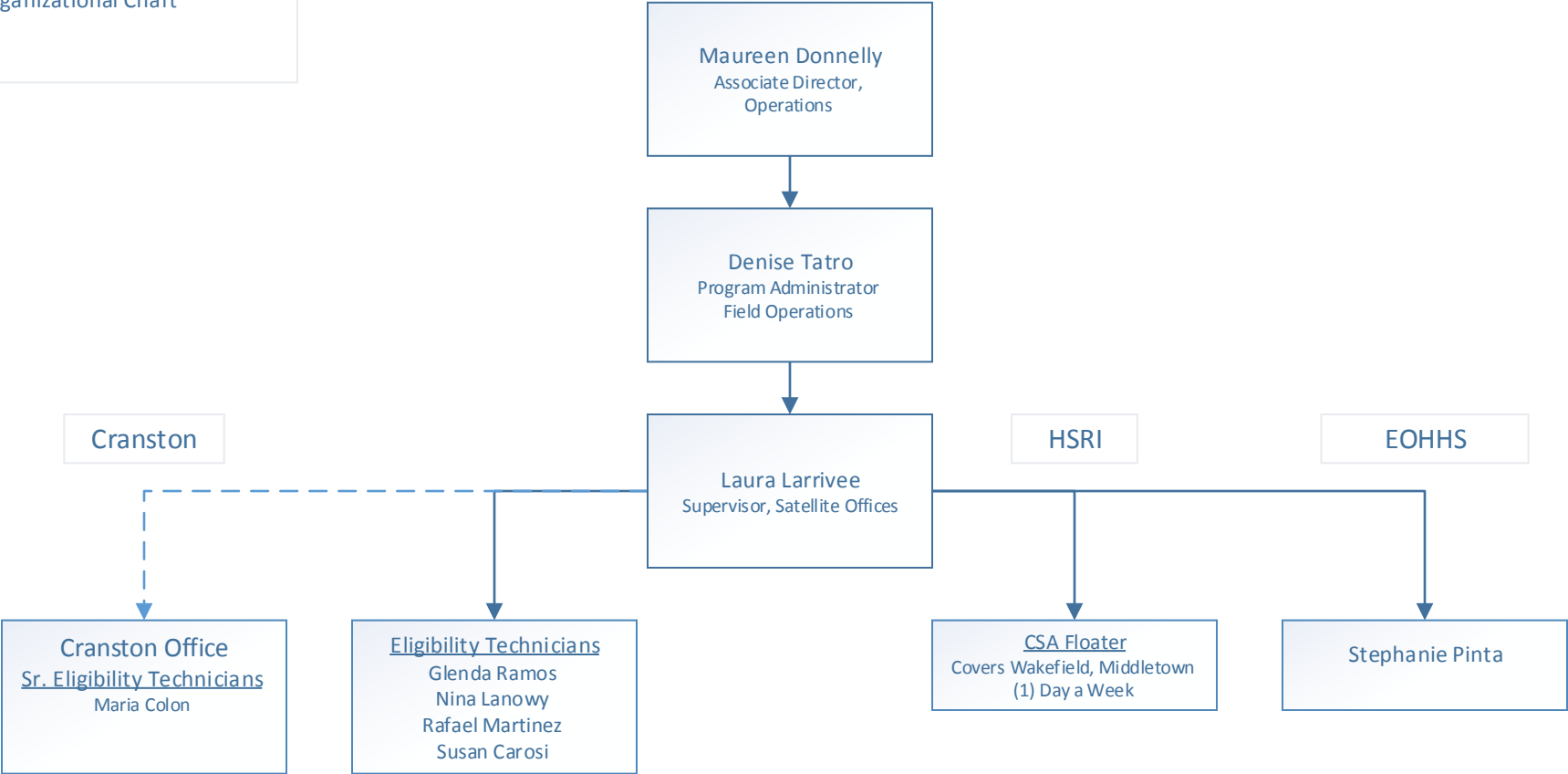
(Draft)



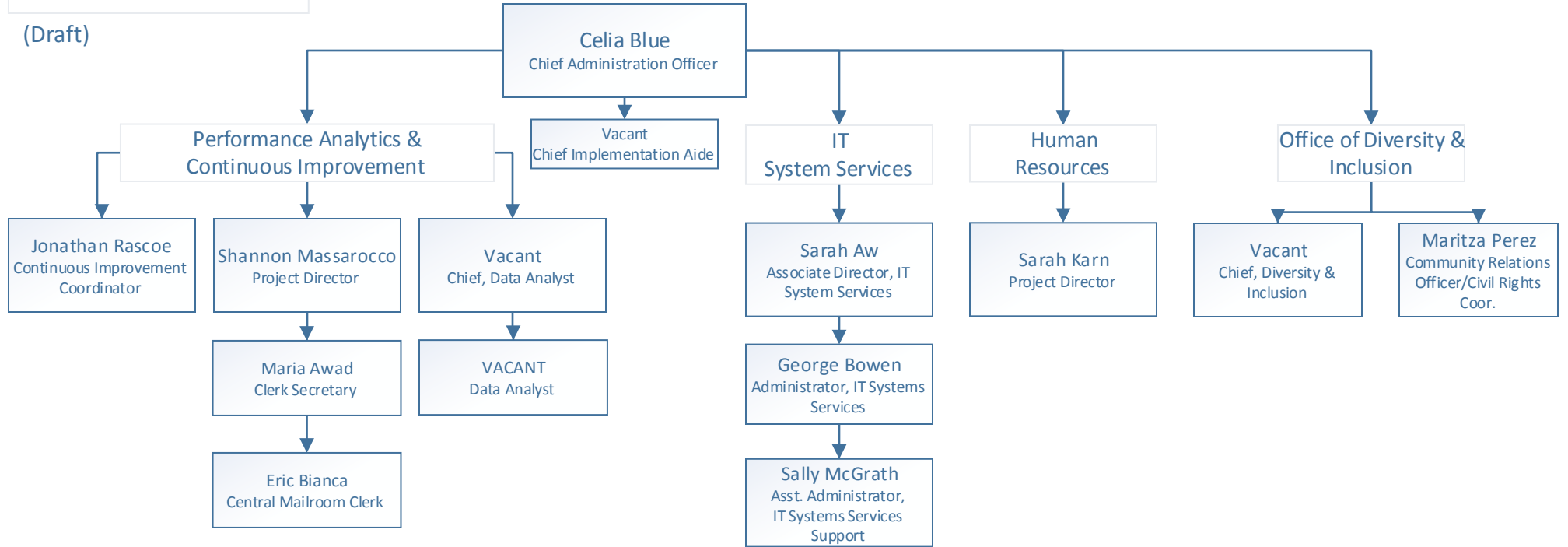




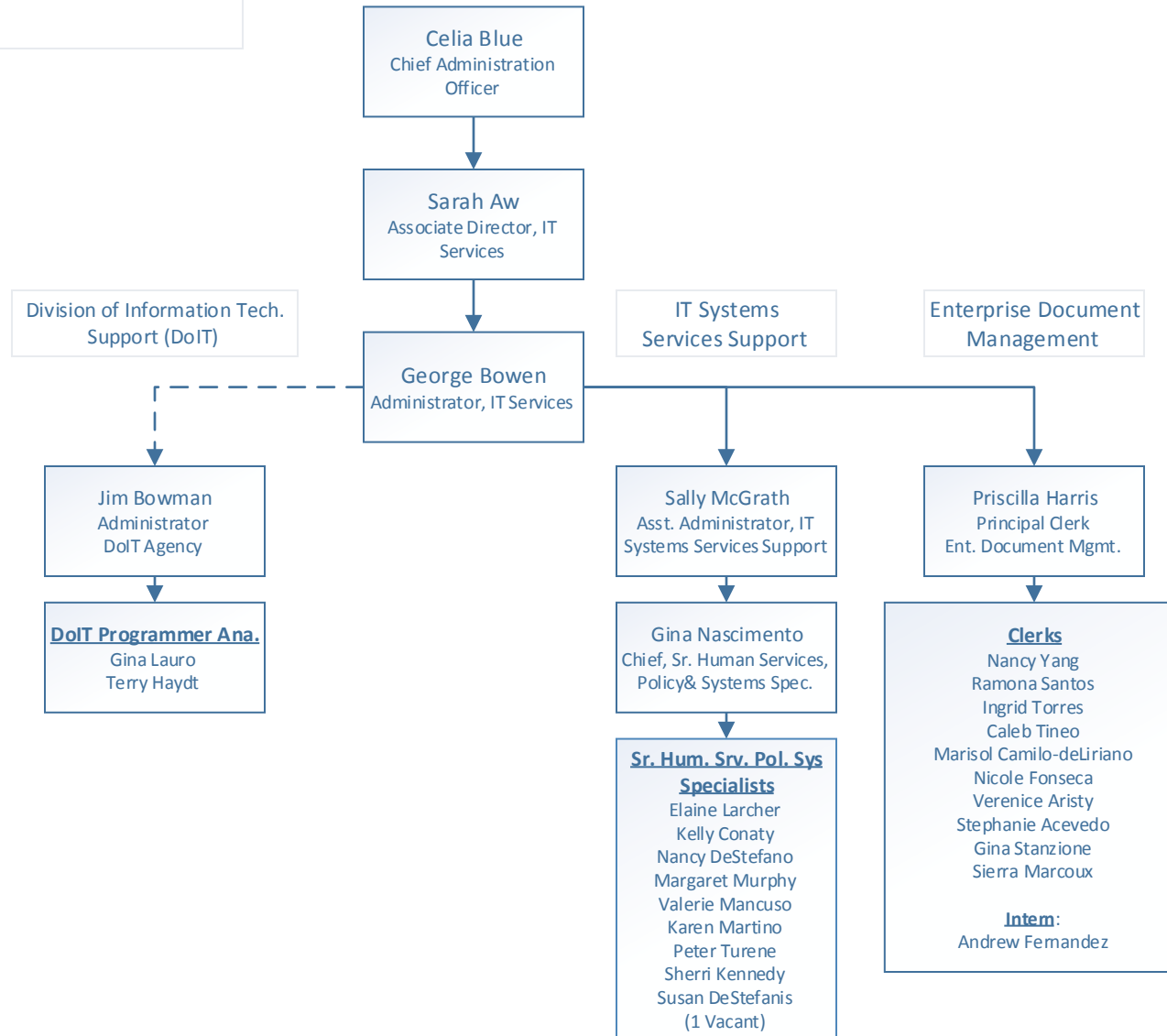
(Draft)



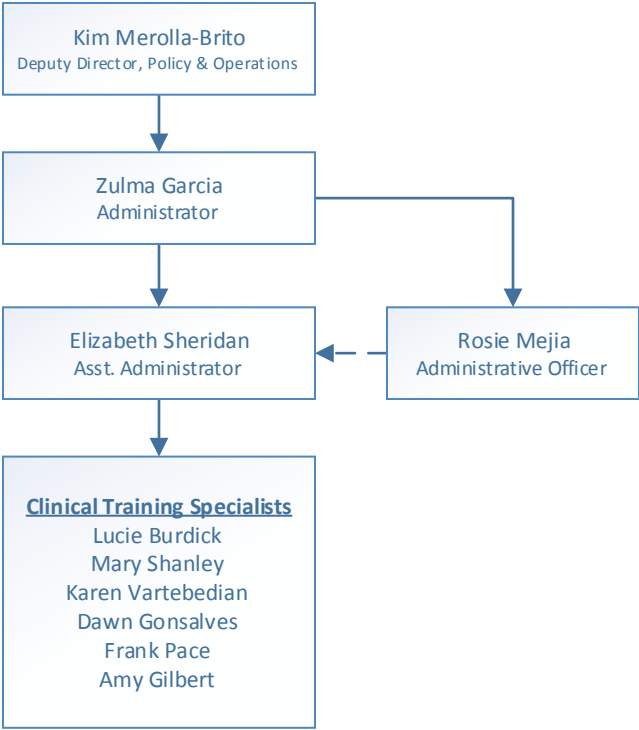
(Draft)



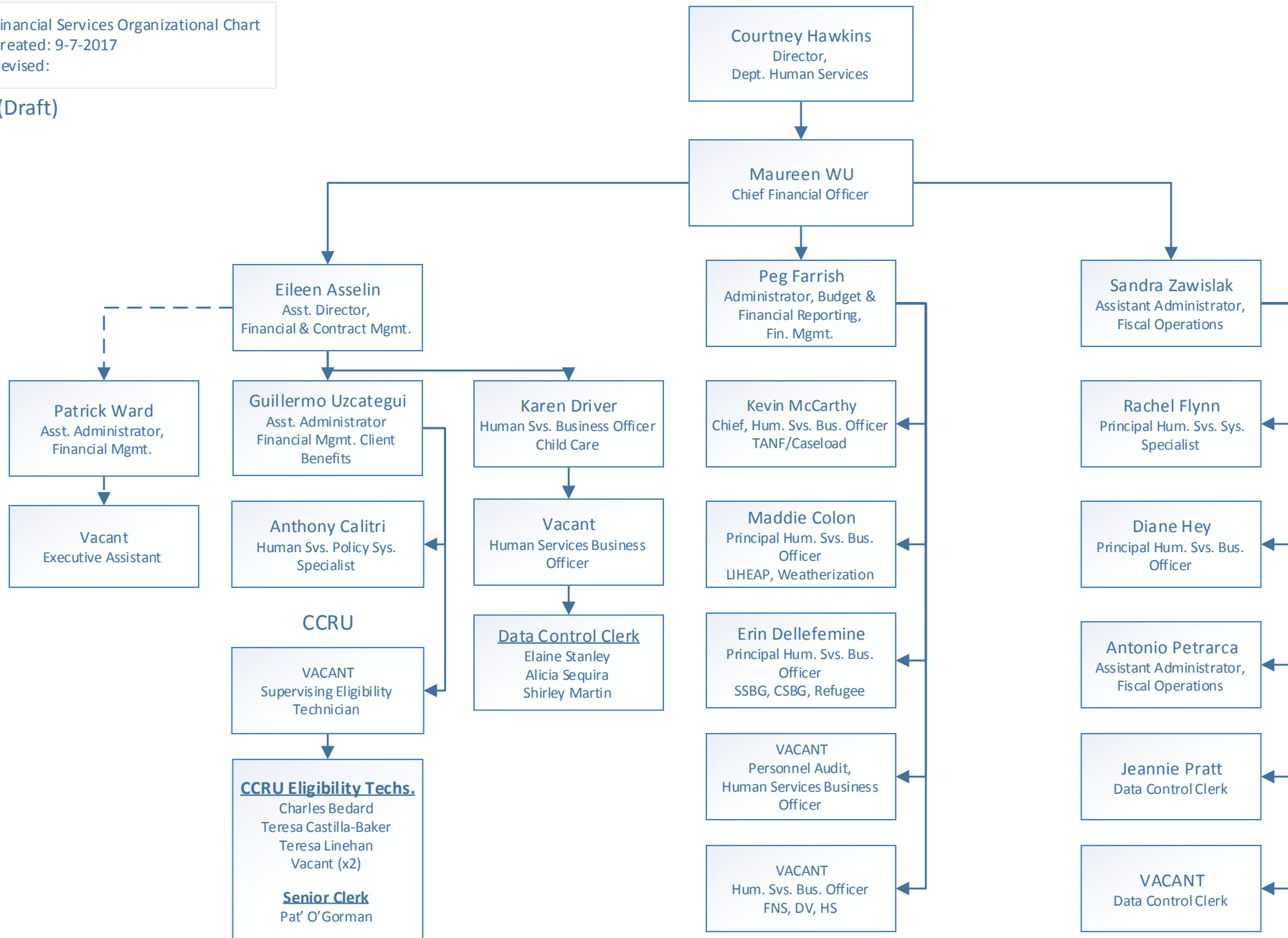
(Draft)



(Draft)



(Draft)



(Draft)

