

MOODY'S

Economic Outlook: Slower Growth, Elevated Risk

Emily Mandel, Senior Economist, Moody's Analytics

Kumael Bilgrami, Associate Economist, Moody's Analytics

Please attribute information in this document to Moody's Analytics, which is a division within Moody's that is separate from Moody's Ratings. Accordingly, the viewpoints expressed herein do not reflect those of Moody's Ratings.

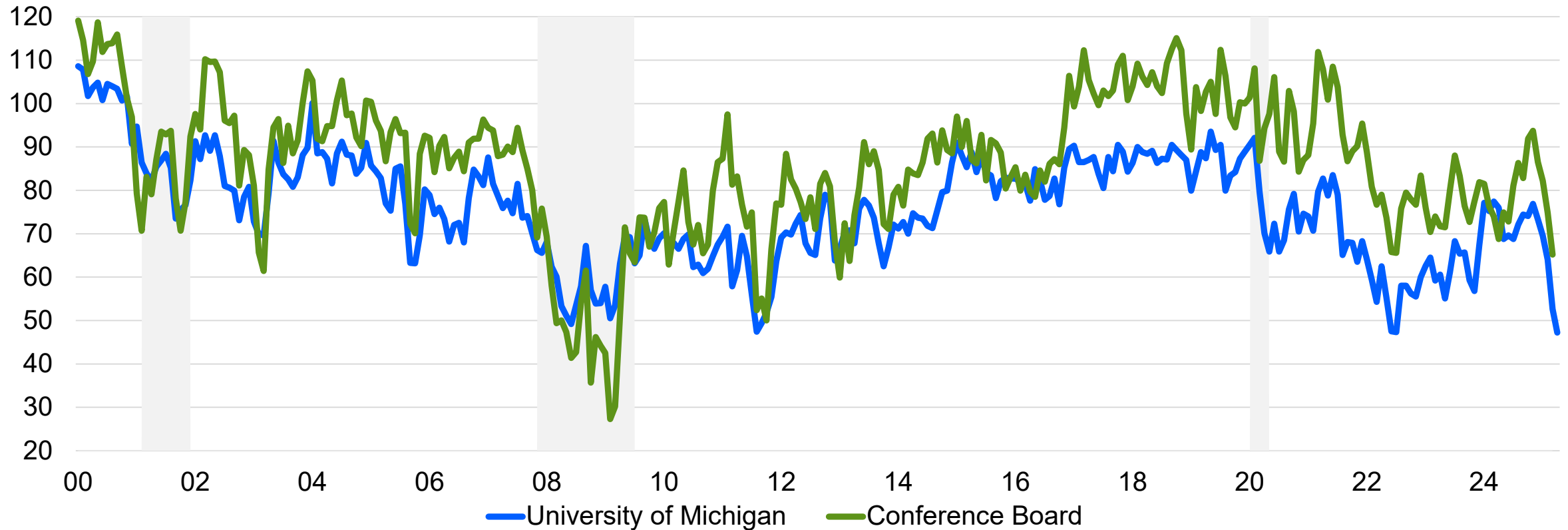
April 29, 2025

The background is a solid dark blue color. It features two large, abstract, wavy patterns made of thin, light blue lines. These patterns resemble stylized waves or a topographical map, with lines curving and overlapping. One large pattern is on the left side, and a smaller one is on the right side. The text 'United States Outlook' is centered in the lower half of the image.

United States Outlook

Consumers Have Rarely Been More Nervous

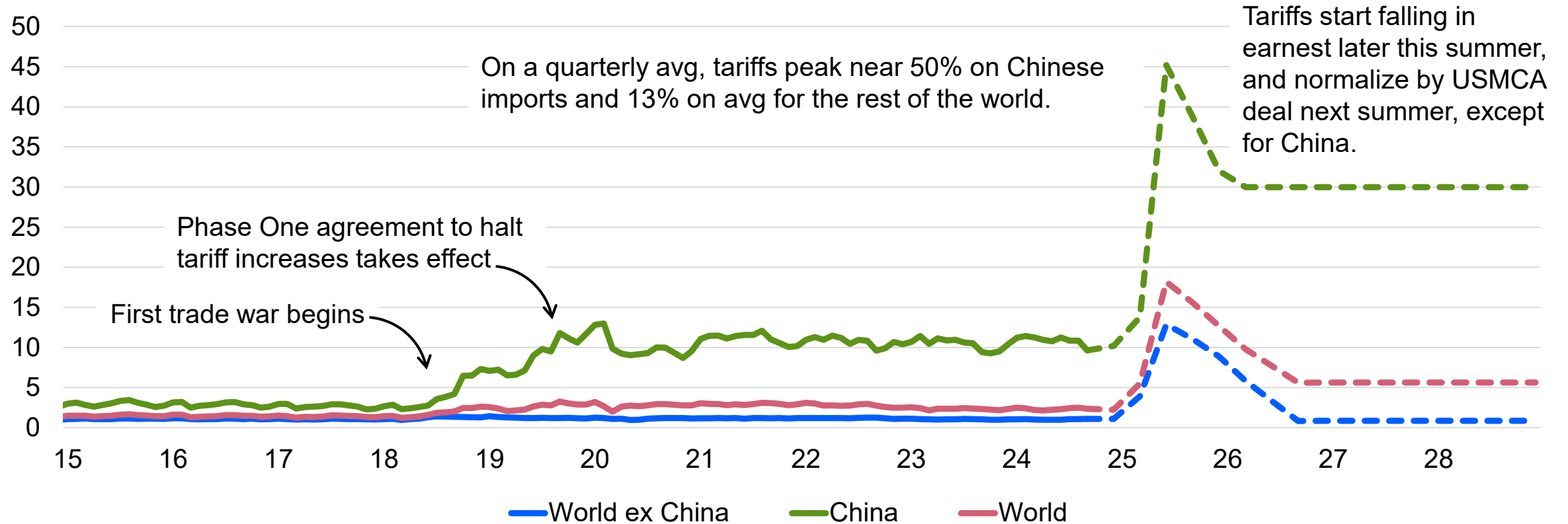
Consumer expectations, index=100



Sources: University of Michigan, The Conference Board, Moody's Analytics

Outlook Hinges on an Off-Ramp in the Trade War

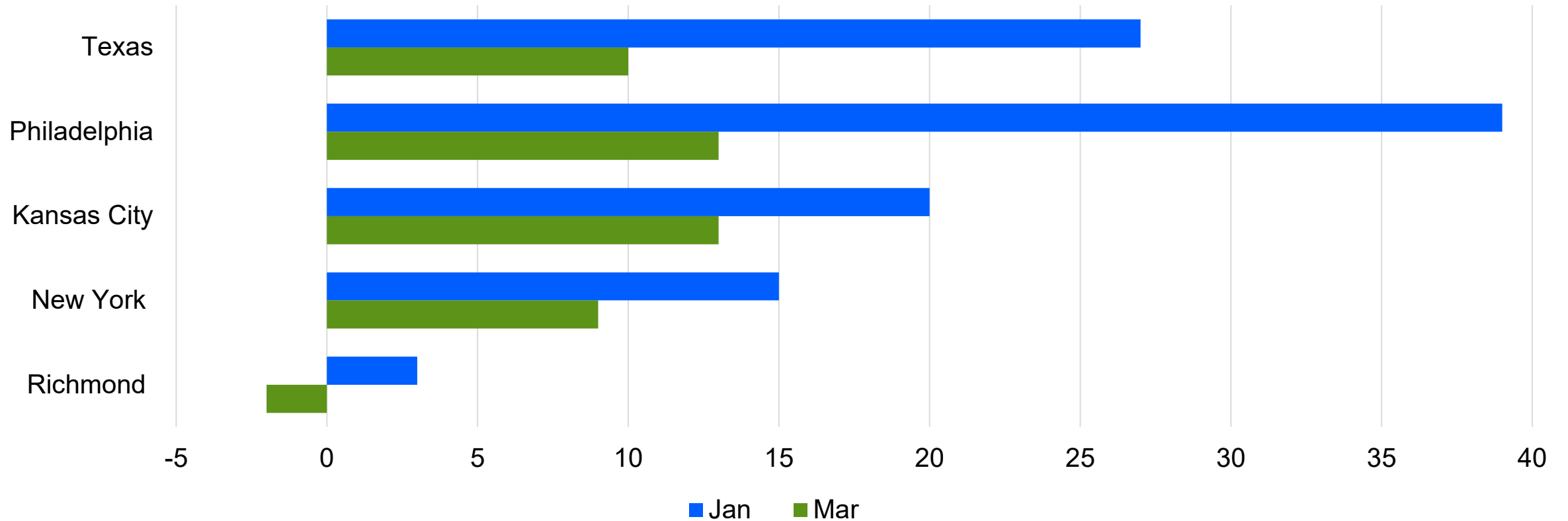
U.S. import duties as a % of U.S. imports, Apr 2025 baseline scenario



Sources: Census Bureau, Moody's Analytics

Business Investment Plans Downbeat

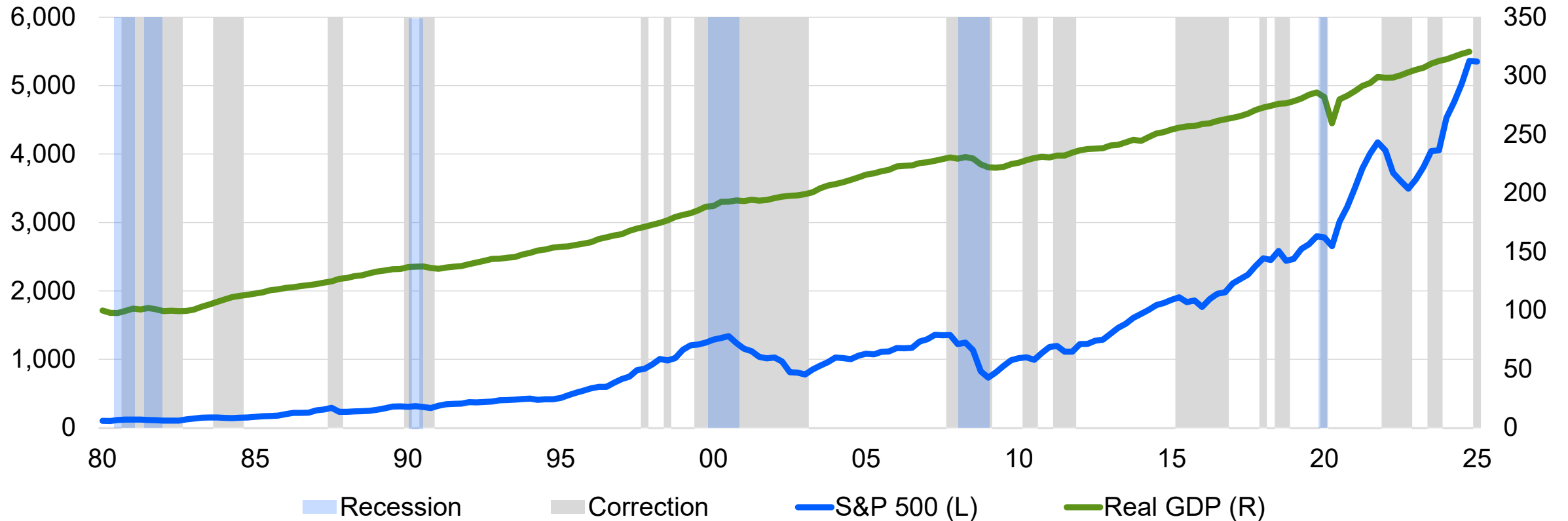
Net % of survey respondents expecting to raise capital spending in next 6 mo



Sources: Federal Reserve banks, Moody's Analytics

Stock Market Corrections Do Not Predict Recessions

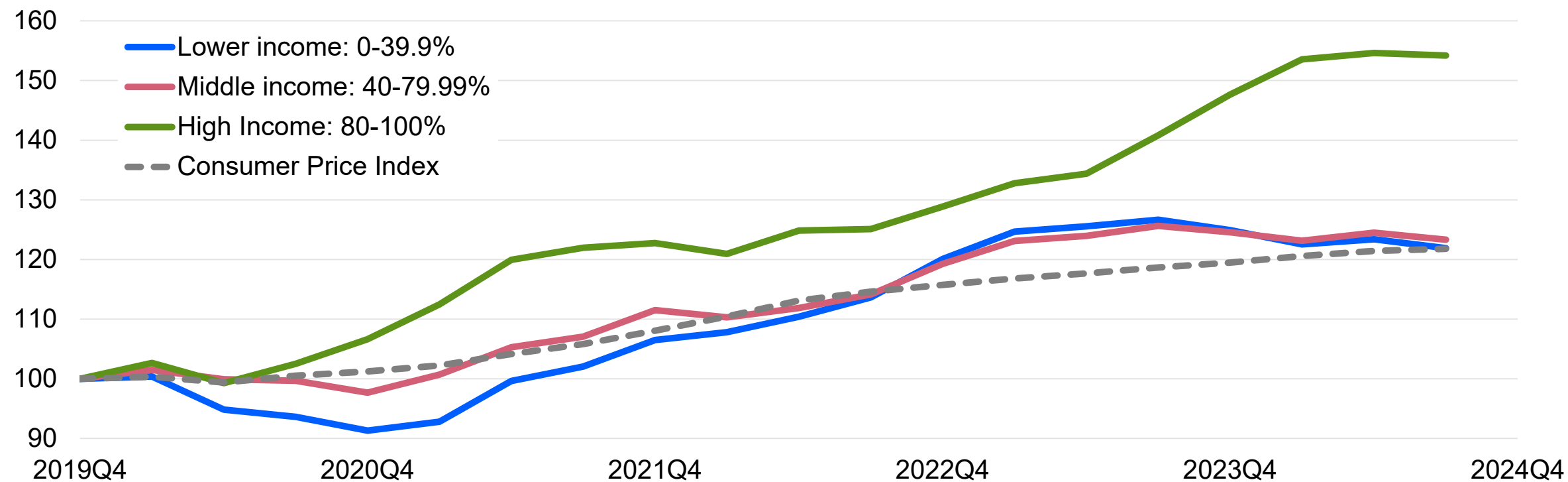
1980Q1=100



Sources: BEA, Standard and Poor's, NBER, Yardeni Research, Moody's Analytics

Negative Wealth Effects Threaten to Be Large

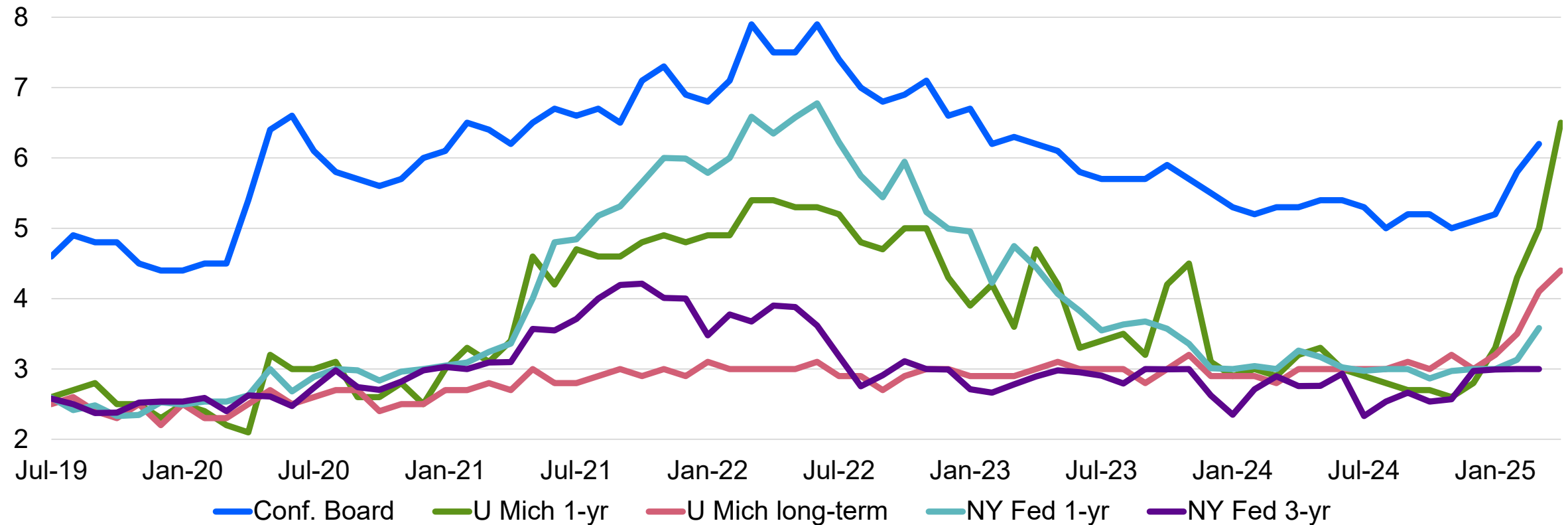
Personal outlays by income group, 2019Q4 = 100



Sources: BLS, Moody's Analytics

Consumers Brace For Higher Prices

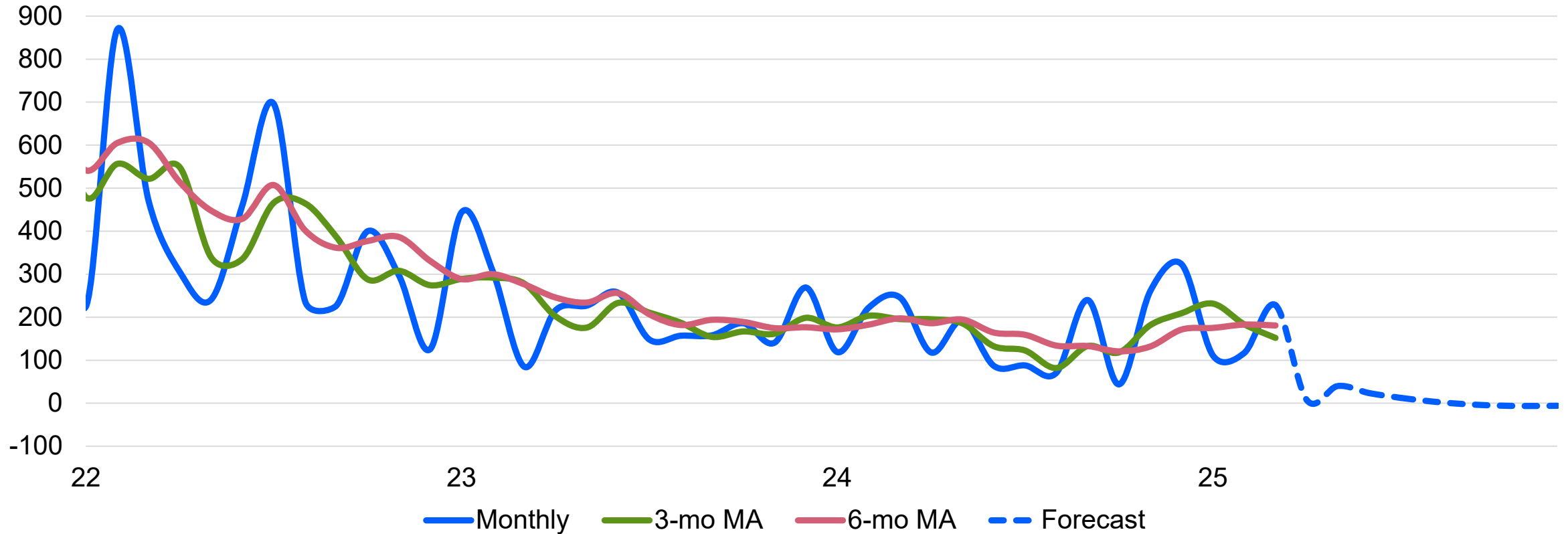
Inflation expectations, % change yr ago



Sources: The Conference Board, University of Michigan, New York Fed, Moody's Analytics

Once-Resilient Labor Market Will Decelerate

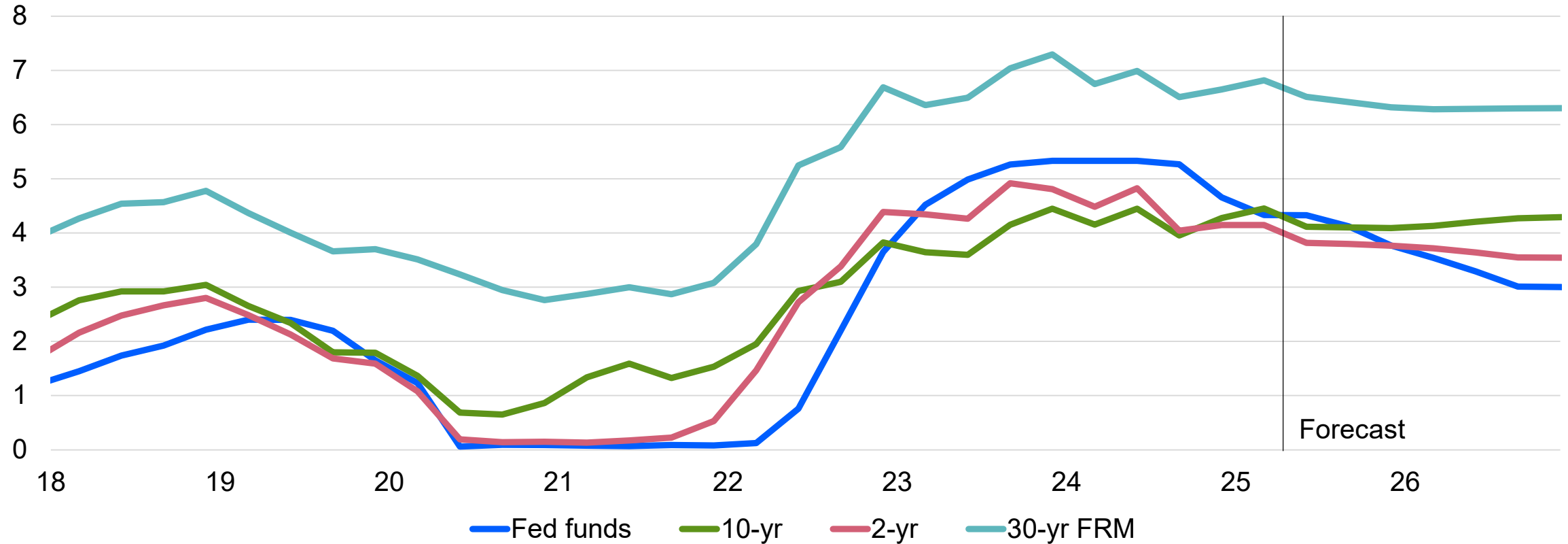
Monthly change in nonfarm payroll employment, ths



Sources: BLS, Moody's Analytics

Shifting Outlook Alters Fed's Calculus

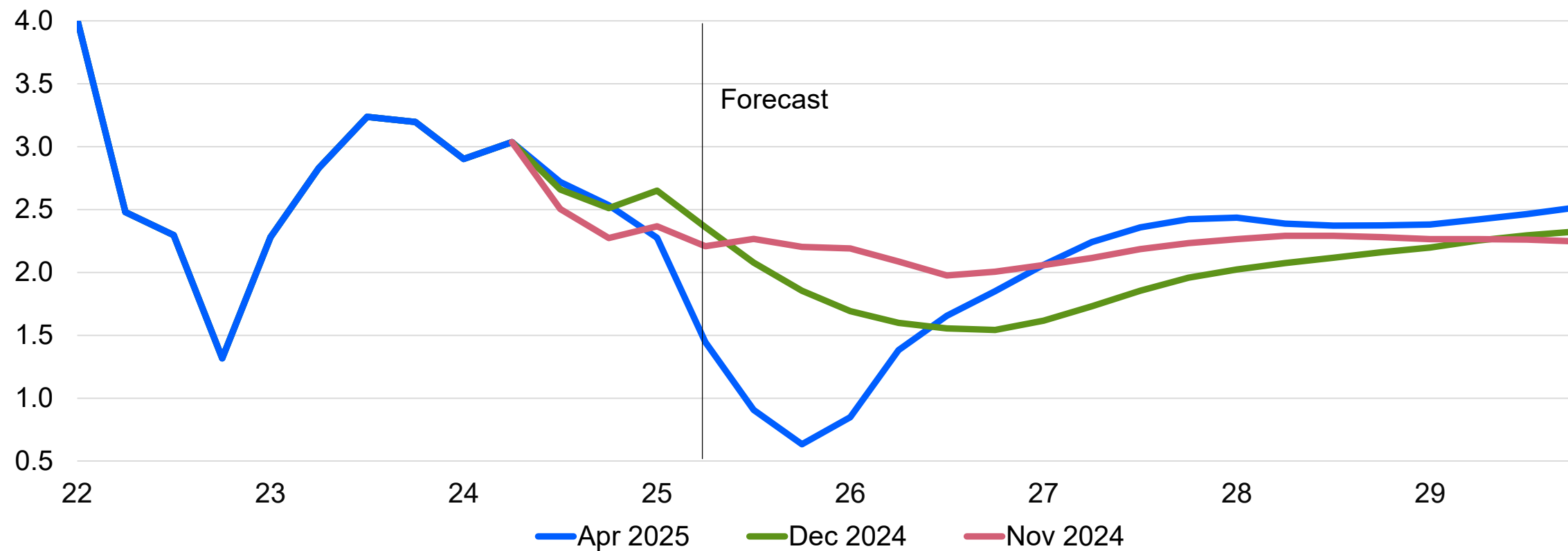
Interest rates, %



Sources: Federal Reserve, Freddie Mac, Moody's Analytics

Economy Stalls But Narrowly Avoids Recession

Real U.S.GDP growth, % change yr ago, baseline scenarios



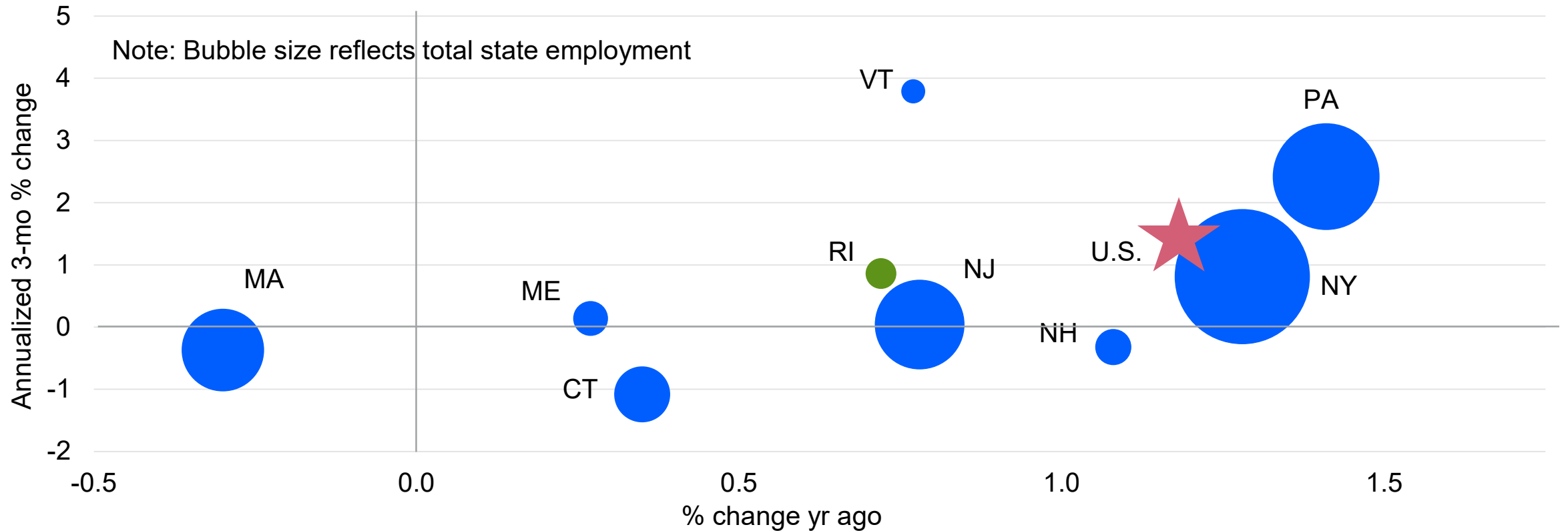
Sources: BEA, Moody's Analytics

The background features a dark blue gradient with intricate, light blue wavy line patterns. These patterns consist of numerous thin, overlapping lines that create a sense of depth and movement, resembling a stylized landscape or abstract data visualization. The lines are most prominent in the upper left and lower right corners, framing the central text.

Rhode Island Outlook

Employment Growth Still Solidly Middle of the Pack

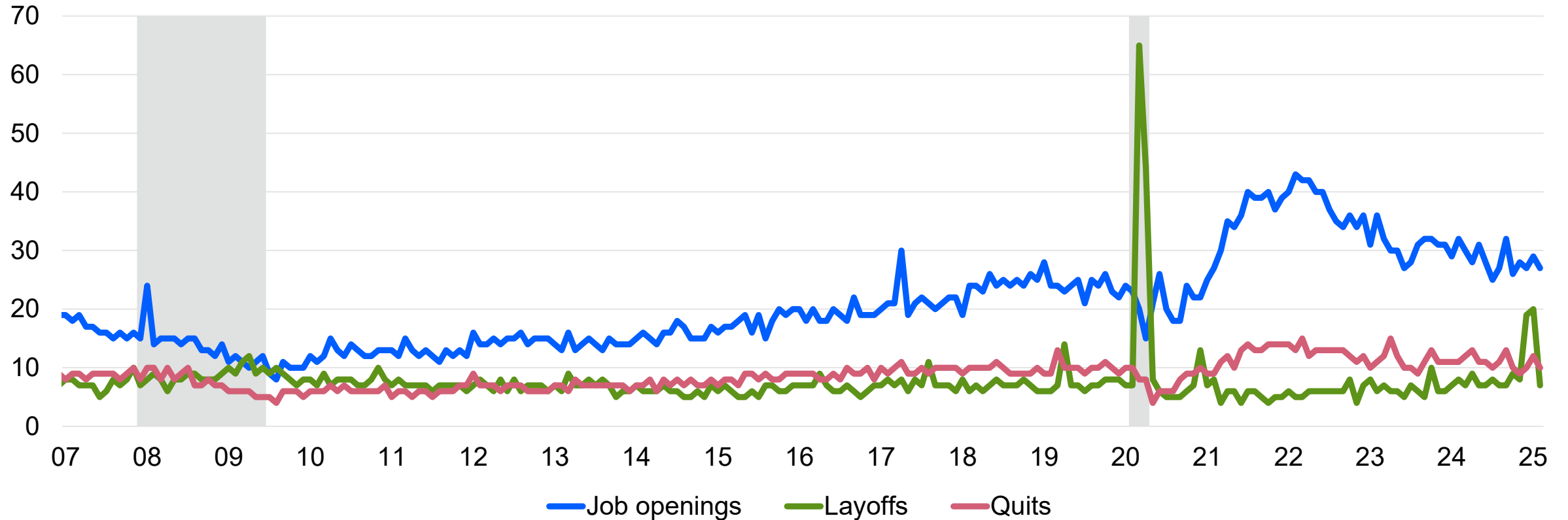
Payroll employment, 1-yr vs 3-mo performance (3-mo MA), March 2025



Sources: BLS, Moody's Analytics

Labor Market Remains Resilient

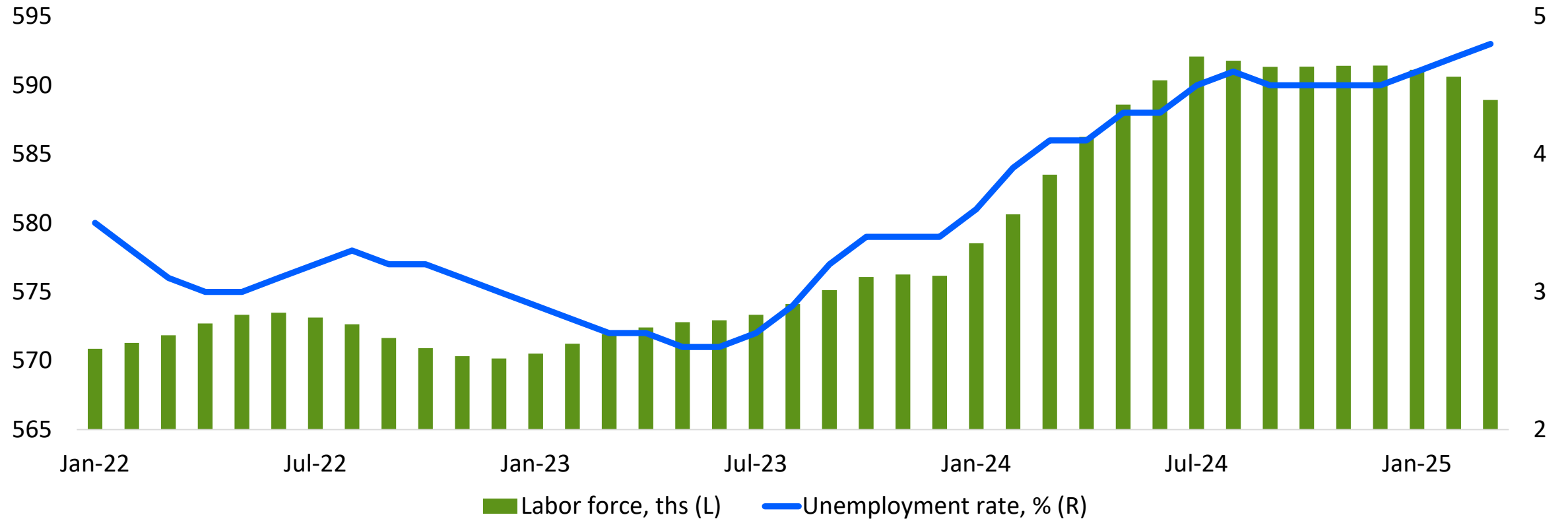
Rhode Island, # ths



Sources: BLS, Moody's Analytics

But the Jobless Rate Has Been Steadily Rising

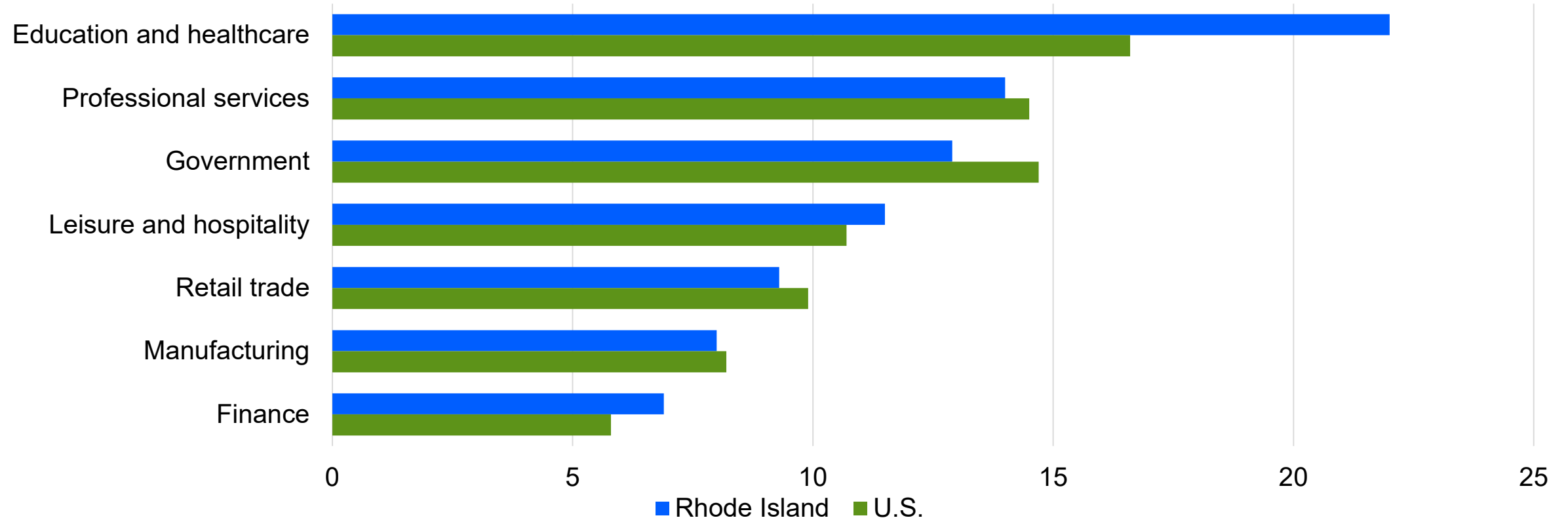
Rhode Island



Sources: BLS, Moody's Analytics

Finance, Education and Healthcare Will Remain Stalwarts

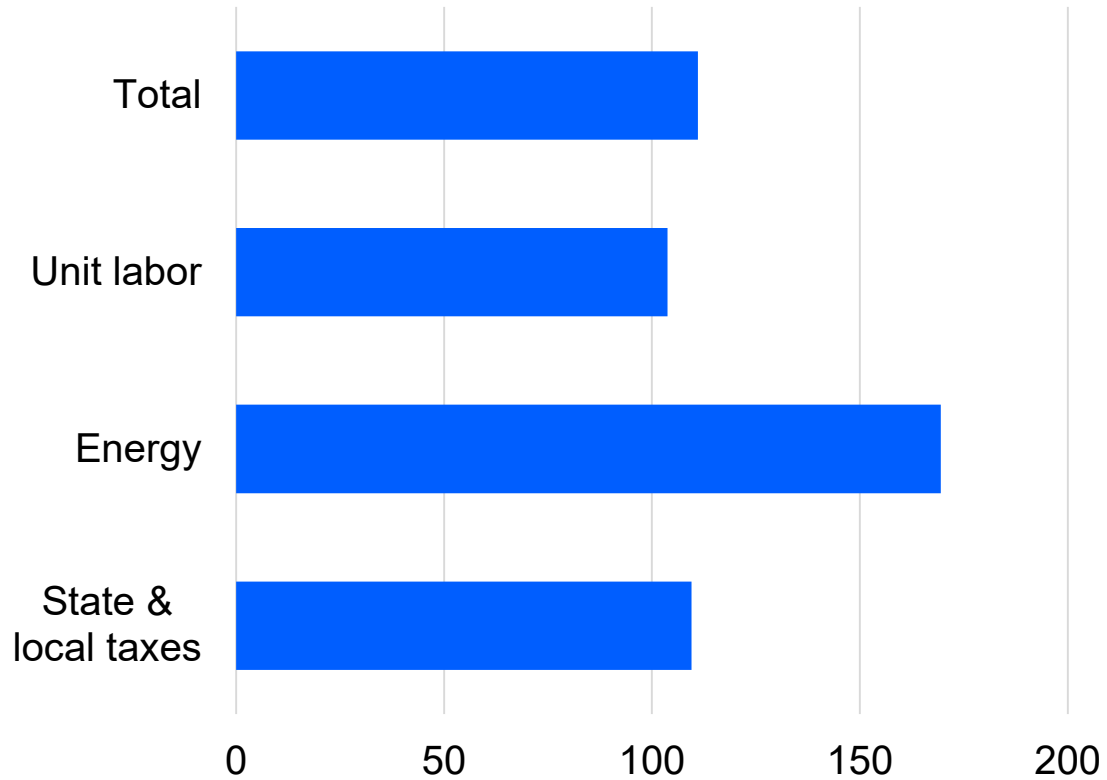
Rhode Island's top industries as a share of total employment, 2025



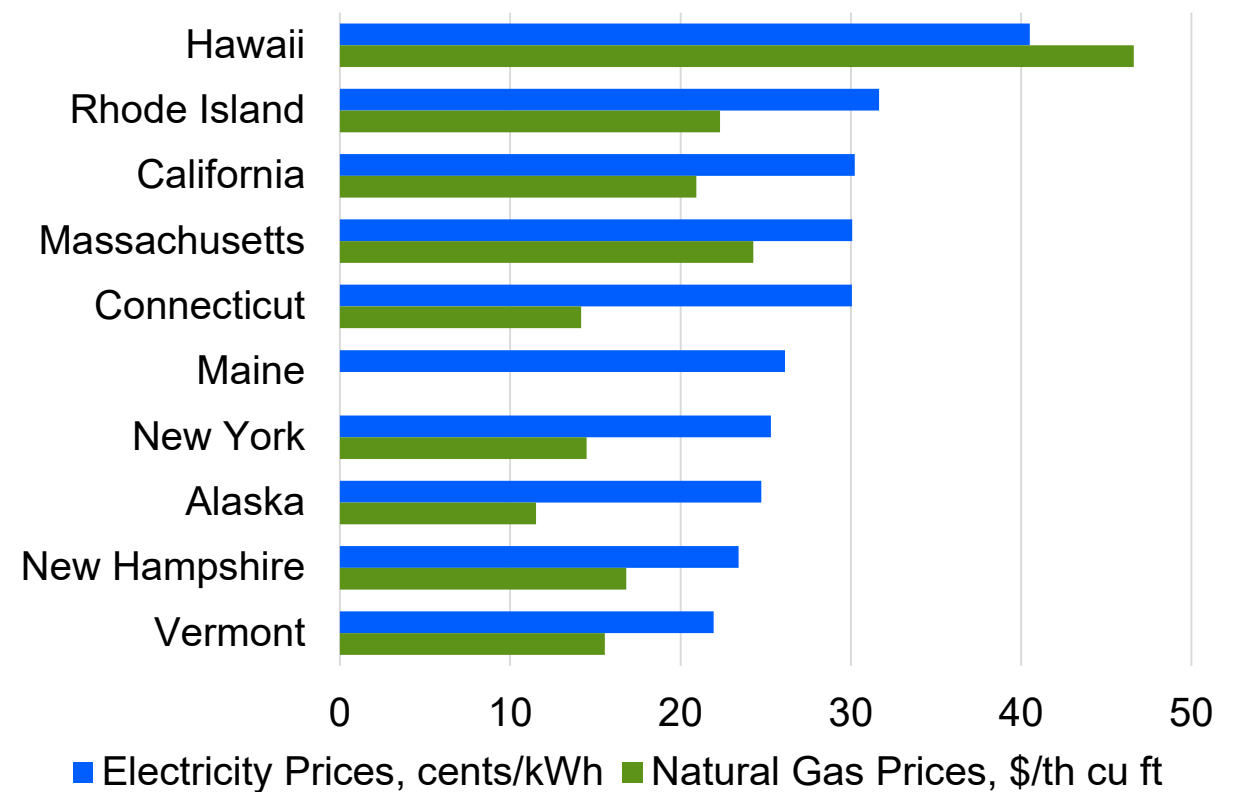
Sources: BLS, Moody's Analytics

Rhode Island Businesses Already Face Considerably High Costs

Rhode Island business costs, 2024, U.S. = 100



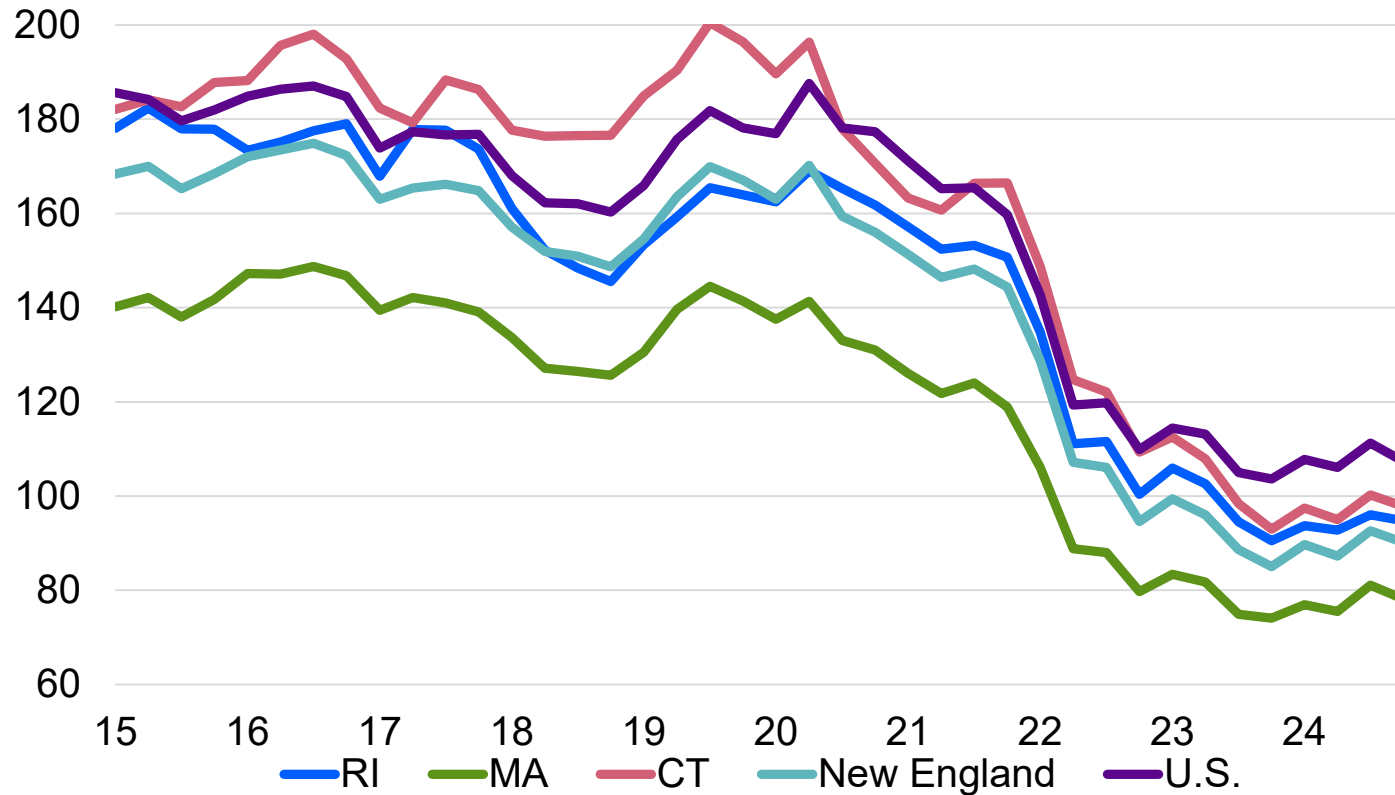
Residential energy prices, 2025



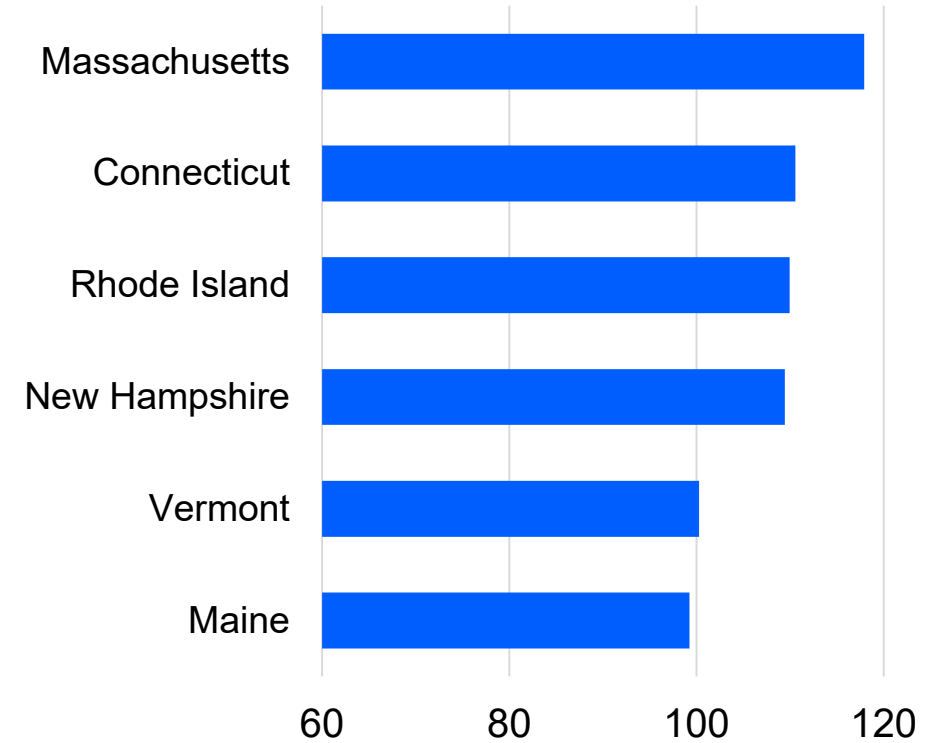
Sources: EIA, Moody's Analytics

And Consumers Don't Have It Much Easier

Housing Affordability Index



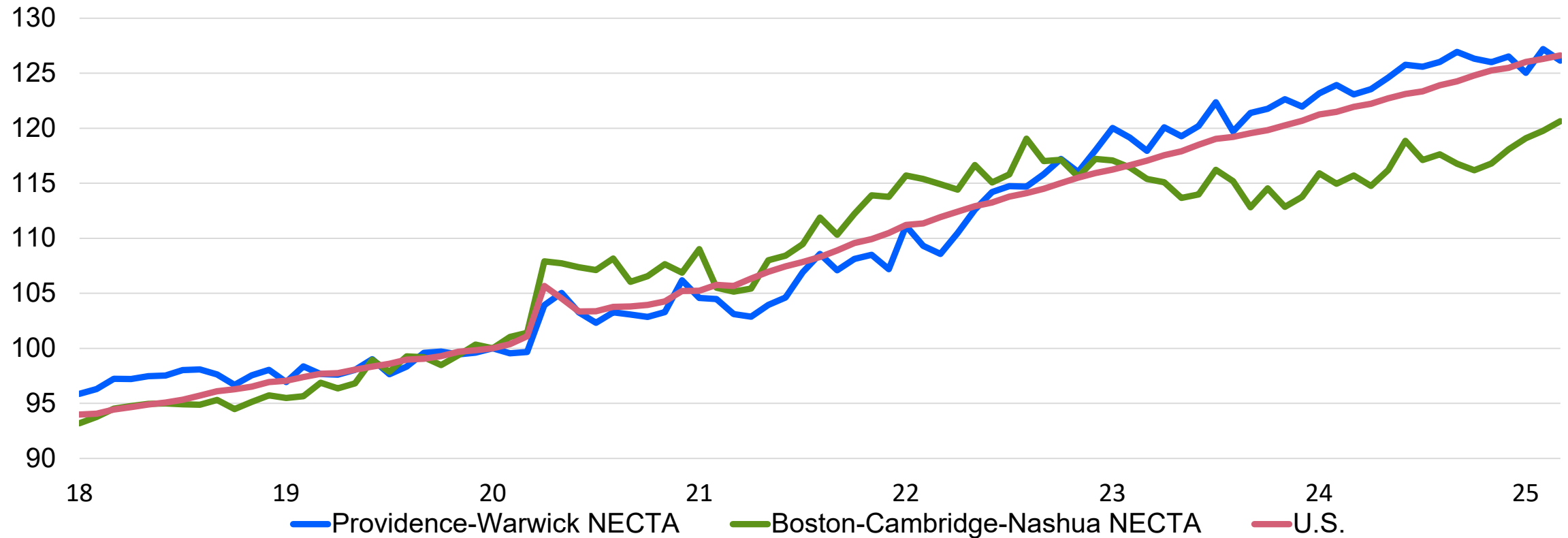
Cost of Living Index, U.S. = 100



Sources: NAR, Census Bureau, BEA, Moody's Analytics

Wage Growth Has Held Up, But the Outlook Calls for Slowing

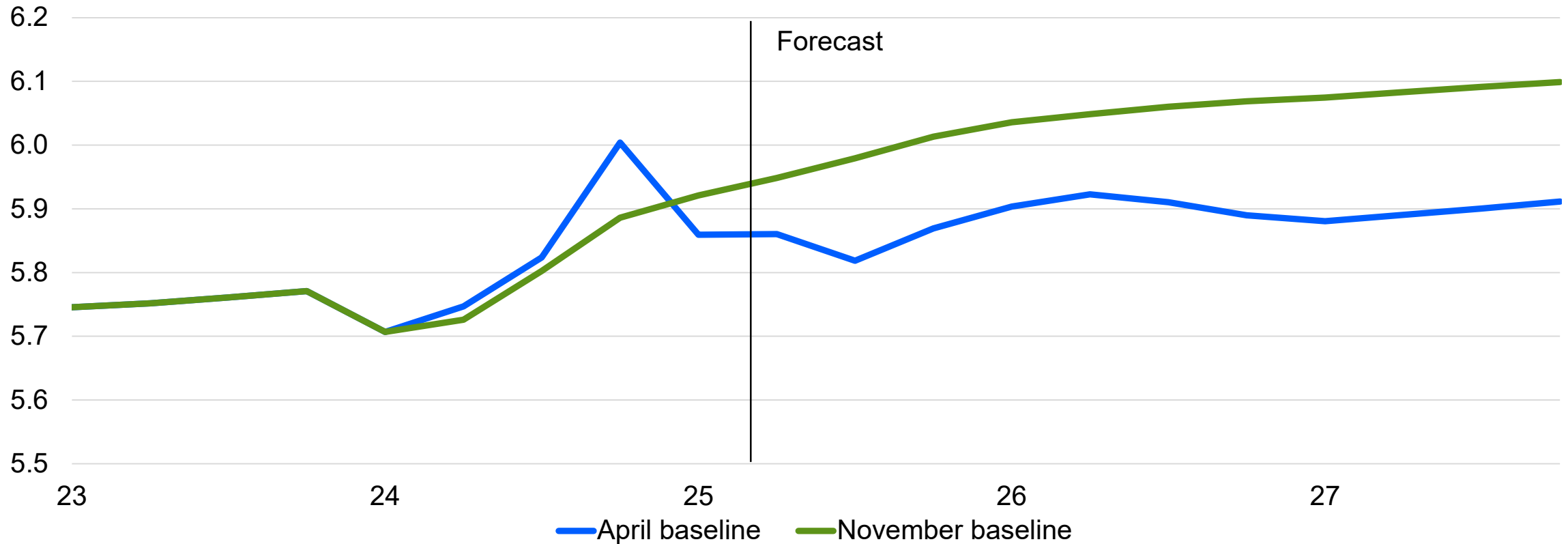
Average hourly earnings, January 2020=100



Sources: BLS, Moody's Analytics

Consumer Spending Will Take A Hit as Tariffs Take Effect

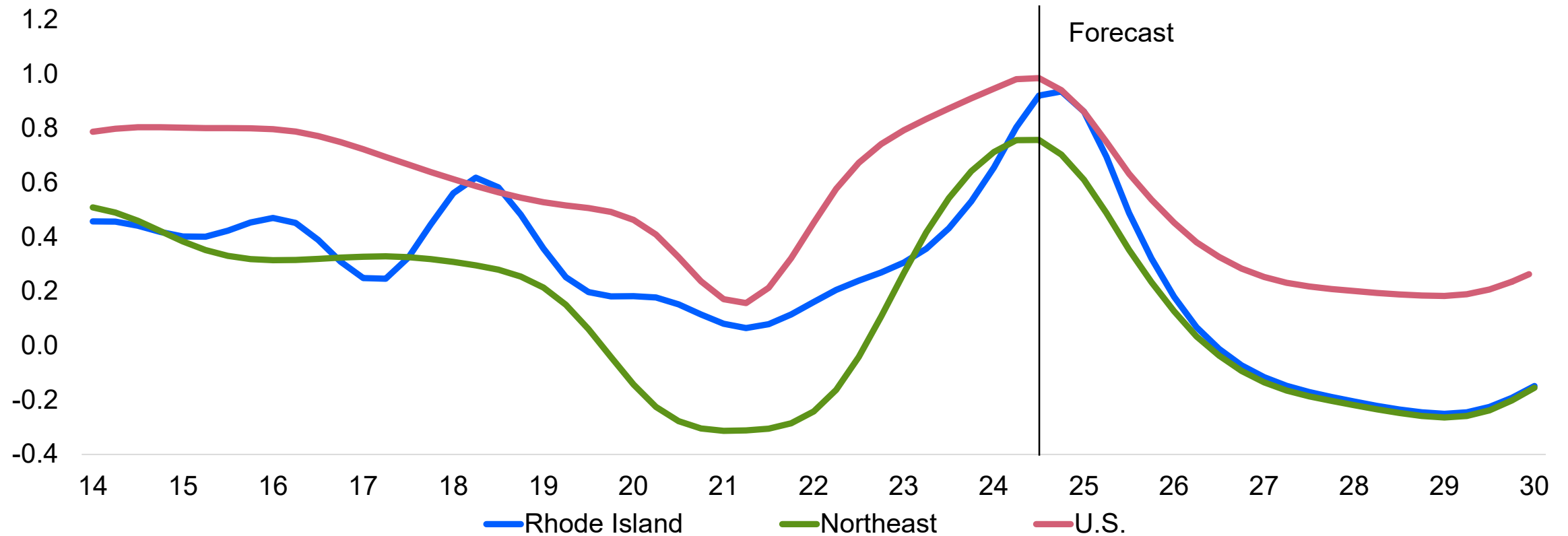
Rhode Island personal consumption expenditures on durable goods, \$ bil



Sources: BEA, Moody's Analytics

Longer Term, Preserving Population Growth Will Remain a Challenge

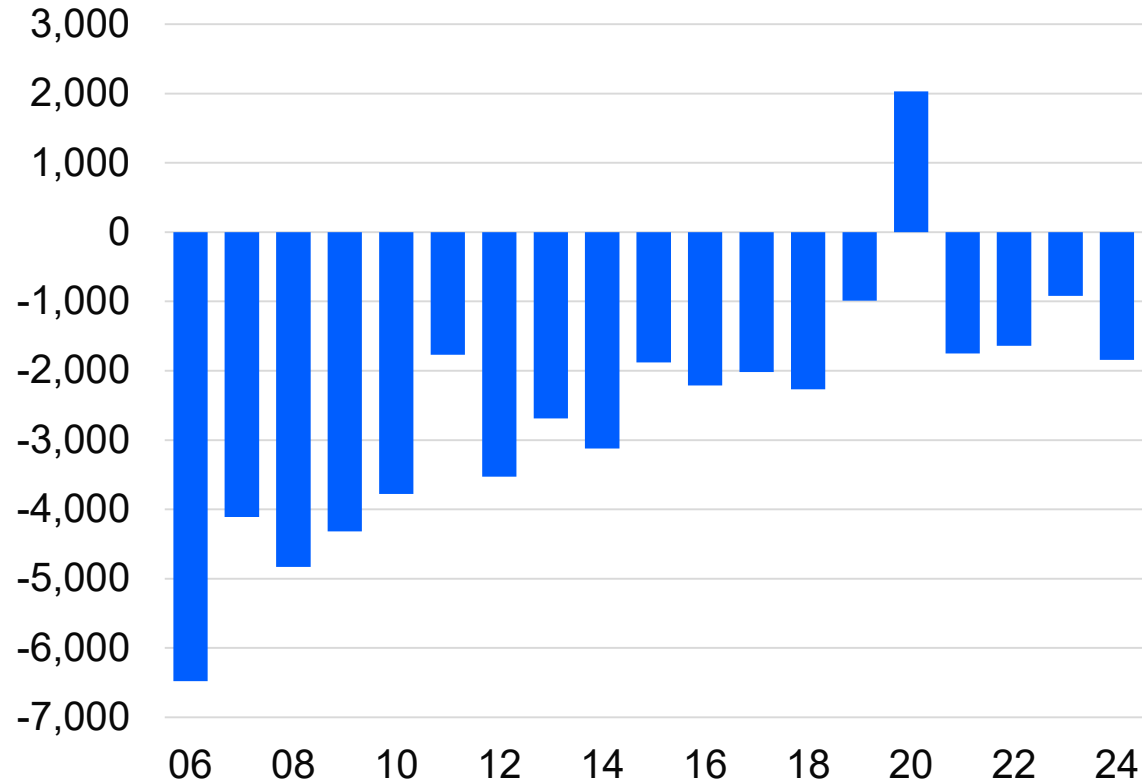
Total resident population, % change yr ago



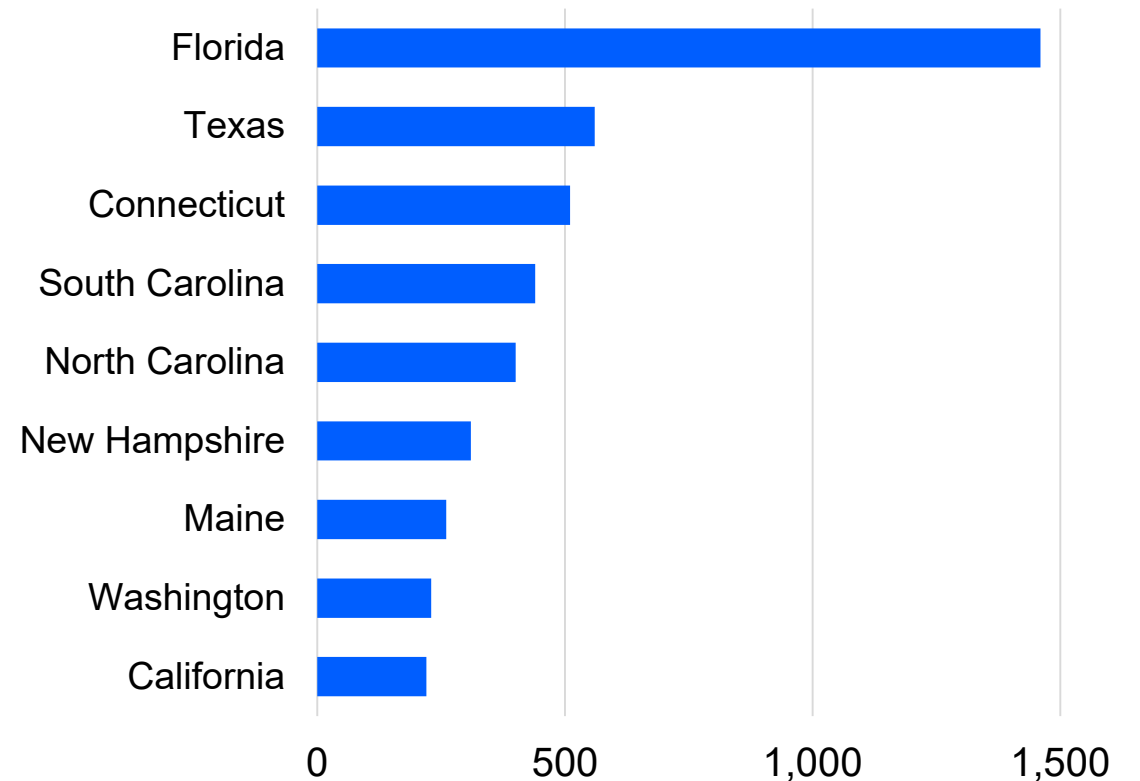
Sources: Census Bureau, Moody's Analytics

And Structural Out-Migration Remains a Sore Spot

Rhode Island, net domestic migration, #



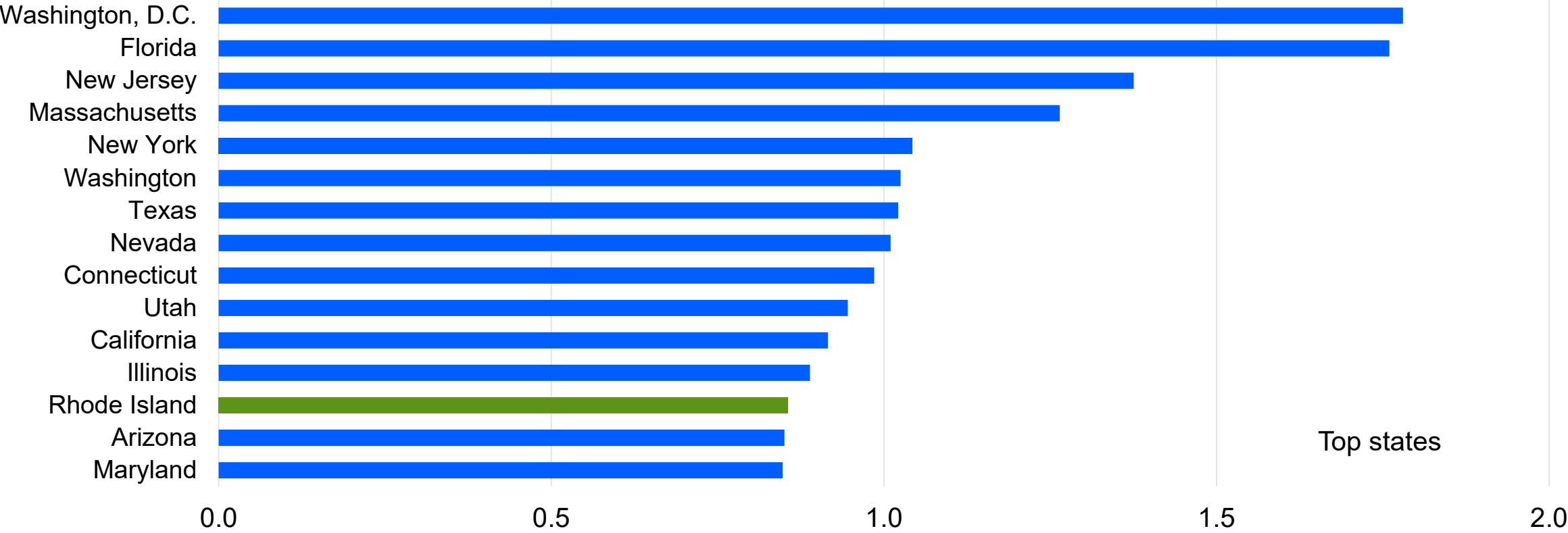
Top destinations for Rhode Island out-migrants, 2024



Sources: Equifax, Moody's Analytics

...Especially Since Immigration Has Been a Helping Hand

International migration share of total population, 2024, %

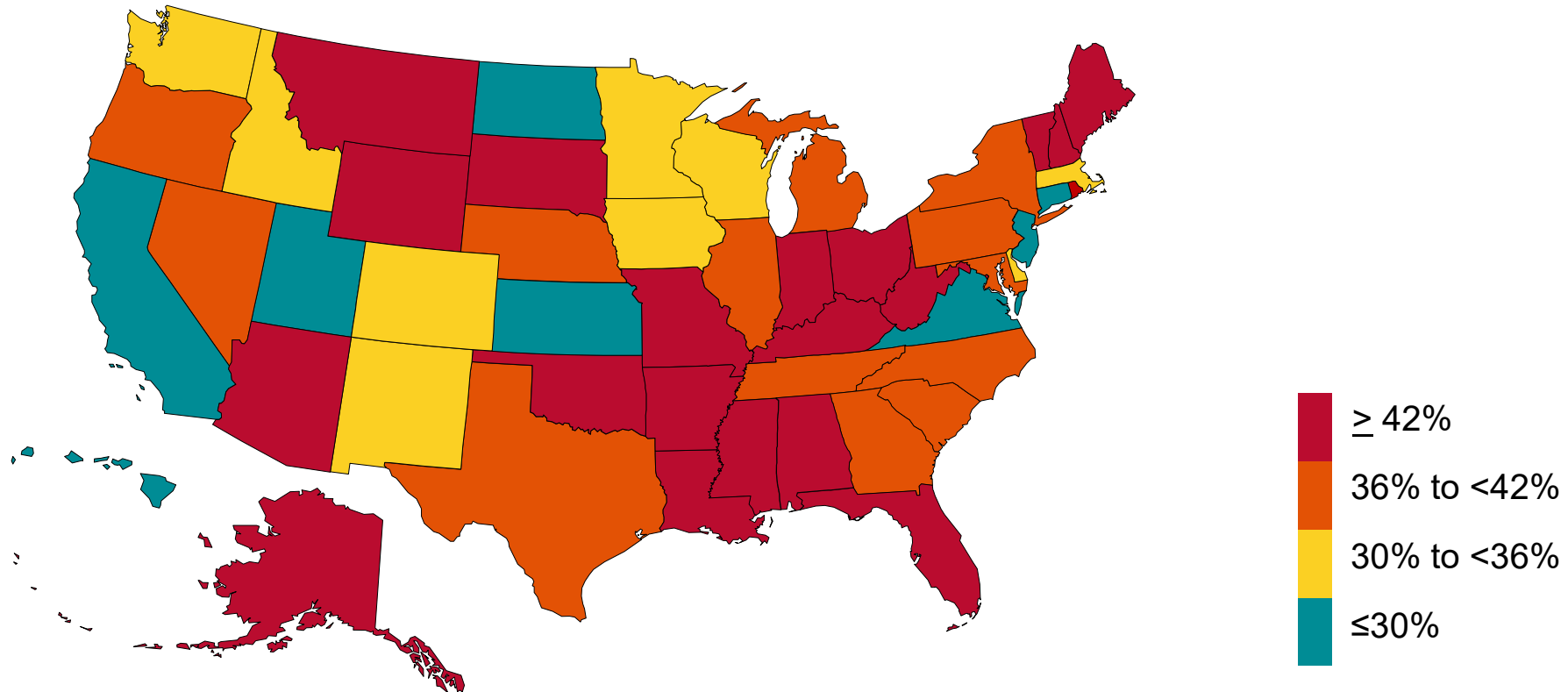


Top states

Sources: Census Bureau, Moody's Analytics

Federal Funding Freezes Are Another Headwind

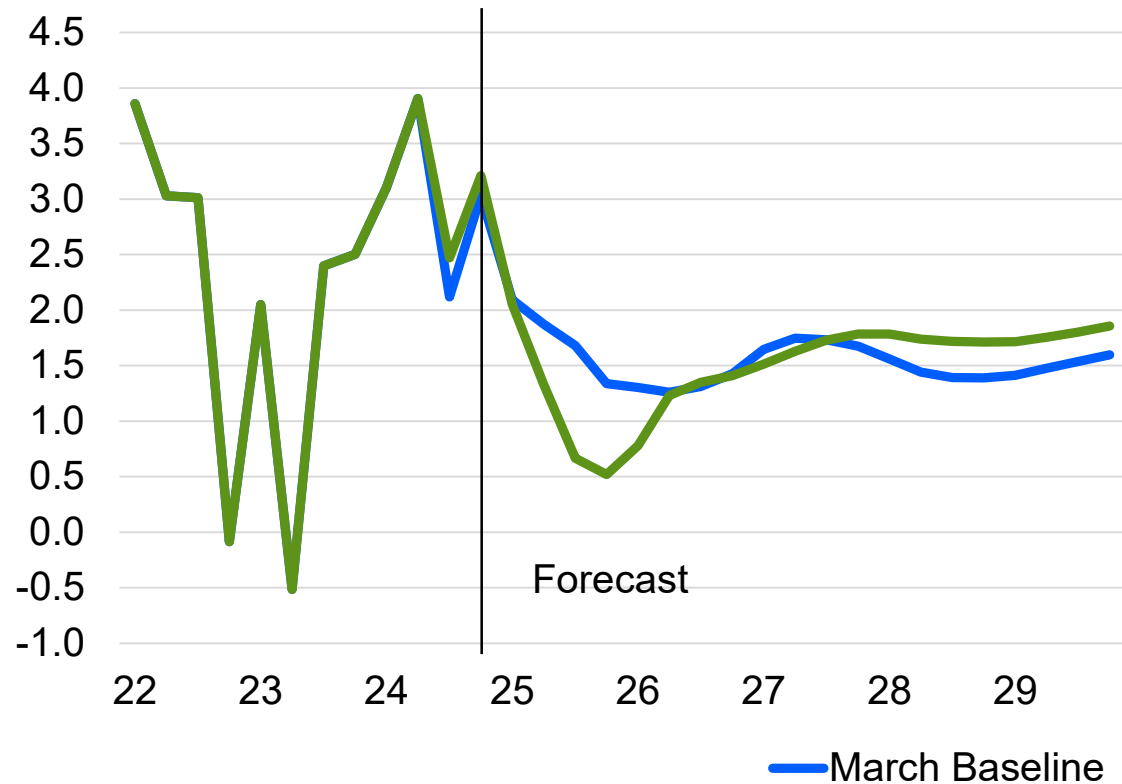
Percentage of state revenues from federal funds, FY 2022



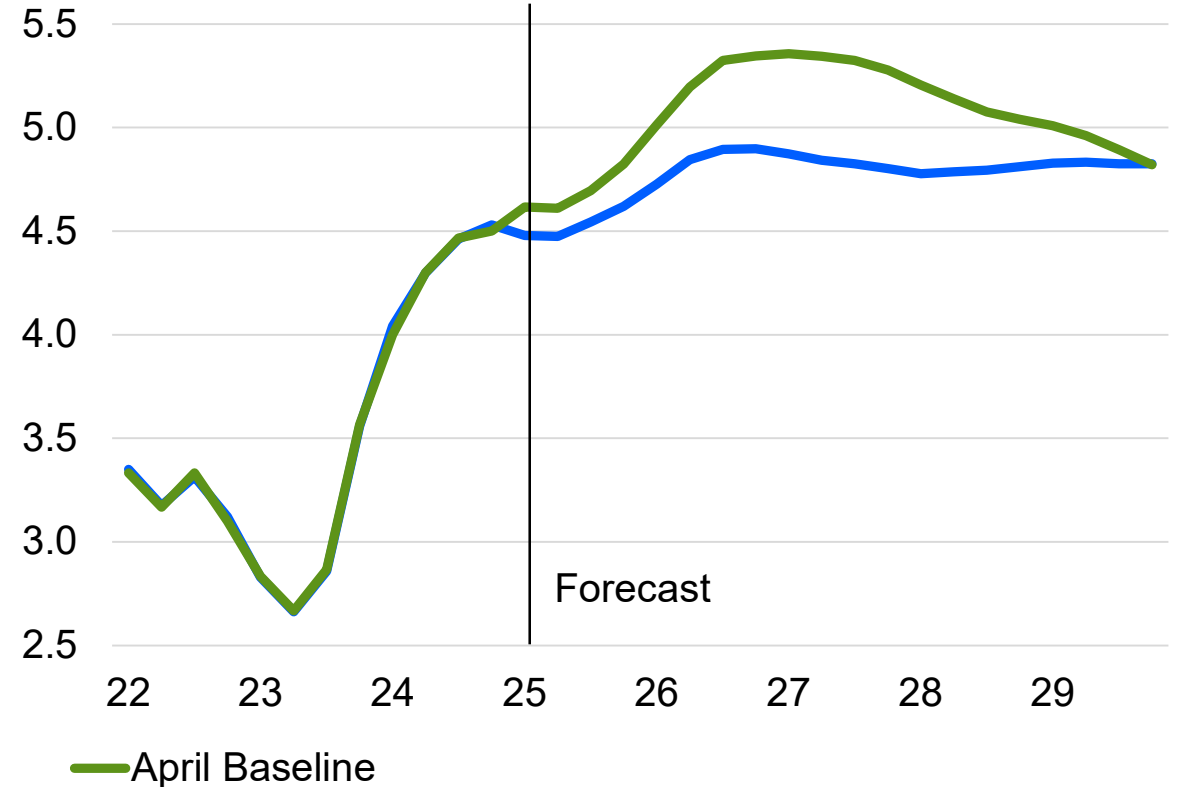
Sources: Census Bureau, The Pew Charitable Trusts, Moody's Analytics

Baseline Outlook Reflects Heightened Downside Risk

Rhode Island real GDP, % change yr ago



Rhode Island unemployment rate, %



Sources: BEA, BLS, Moody's Analytics

© 2025 Moody's Corporation, Moody's Investors Service, Inc., Moody's Analytics, Inc. and/or their licensors and affiliates (collectively, "MOODY'S"). All rights reserved.

CREDIT RATINGS ISSUED BY MOODY'S CREDIT RATINGS AFFILIATES ARE THEIR CURRENT OPINIONS OF THE RELATIVE FUTURE CREDIT RISK OF ENTITIES, CREDIT COMMITMENTS, OR DEBT OR DEBT-LIKE SECURITIES, AND MATERIALS, PRODUCTS, SERVICES AND INFORMATION PUBLISHED OR OTHERWISE MADE AVAILABLE BY MOODY'S (COLLECTIVELY, "MATERIALS") MAY INCLUDE SUCH CURRENT OPINIONS. MOODY'S DEFINES CREDIT RISK AS THE RISK THAT AN ENTITY MAY NOT MEET ITS CONTRACTUAL FINANCIAL OBLIGATIONS AS THEY COME DUE AND ANY ESTIMATED FINANCIAL LOSS IN THE EVENT OF DEFAULT OR IMPAIRMENT. SEE APPLICABLE MOODY'S RATING SYMBOLS AND DEFINITIONS PUBLICATION FOR INFORMATION ON THE TYPES OF CONTRACTUAL FINANCIAL OBLIGATIONS ADDRESSED BY MOODY'S CREDIT RATINGS. CREDIT RATINGS DO NOT ADDRESS ANY OTHER RISK, INCLUDING BUT NOT LIMITED TO: LIQUIDITY RISK, MARKET VALUE RISK, OR PRICE VOLATILITY. CREDIT RATINGS, NON-CREDIT ASSESSMENTS ("ASSESSMENTS"), AND OTHER OPINIONS INCLUDED IN MOODY'S MATERIALS ARE NOT STATEMENTS OF CURRENT OR HISTORICAL FACT. MOODY'S MATERIALS MAY ALSO INCLUDE QUANTITATIVE MODEL-BASED ESTIMATES OF CREDIT RISK AND RELATED OPINIONS OR COMMENTARY PUBLISHED BY MOODY'S ANALYTICS, INC. AND/OR ITS AFFILIATES. MOODY'S CREDIT RATINGS, ASSESSMENTS, OTHER OPINIONS AND MATERIALS DO NOT CONSTITUTE OR PROVIDE INVESTMENT OR FINANCIAL ADVICE, AND MOODY'S CREDIT RATINGS, ASSESSMENTS, OTHER OPINIONS AND MATERIALS ARE NOT AND DO NOT PROVIDE RECOMMENDATIONS TO PURCHASE, SELL, OR HOLD PARTICULAR SECURITIES. MOODY'S CREDIT RATINGS, ASSESSMENTS, OTHER OPINIONS AND MATERIALS DO NOT COMMENT ON THE SUITABILITY OF AN INVESTMENT FOR ANY PARTICULAR INVESTOR. MOODY'S ISSUES ITS CREDIT RATINGS, ASSESSMENTS AND OTHER OPINIONS AND PUBLISHES OR OTHERWISE MAKES AVAILABLE ITS MATERIALS WITH THE EXPECTATION AND UNDERSTANDING THAT EACH INVESTOR WILL, WITH DUE CARE, MAKE ITS OWN STUDY AND EVALUATION OF EACH SECURITY THAT IS UNDER CONSIDERATION FOR PURCHASE, HOLDING, OR SALE.

MOODY'S CREDIT RATINGS, ASSESSMENTS, OTHER OPINIONS, AND MATERIALS ARE NOT INTENDED FOR USE BY RETAIL INVESTORS AND IT WOULD BE RECKLESS AND INAPPROPRIATE FOR RETAIL INVESTORS TO USE MOODY'S CREDIT RATINGS, ASSESSMENTS, OTHER OPINIONS OR MATERIALS WHEN MAKING AN INVESTMENT DECISION. IF IN DOUBT YOU SHOULD CONTACT YOUR FINANCIAL OR OTHER PROFESSIONAL ADVISER.

ALL INFORMATION CONTAINED HEREIN IS PROTECTED BY LAW, INCLUDING BUT NOT LIMITED TO, COPYRIGHT LAW, AND NONE OF SUCH INFORMATION MAY BE COPIED OR OTHERWISE REPRODUCED, REPACKAGED, FURTHER TRANSMITTED, TRANSFERRED, DISSEMINATED, REDISTRIBUTED OR RESOLD, OR STORED FOR SUBSEQUENT USE FOR ANY SUCH PURPOSE, IN WHOLE OR IN PART, IN ANY FORM OR MANNER OR BY ANY MEANS WHATSOEVER, BY ANY PERSON WITHOUT MOODY'S PRIOR WRITTEN CONSENT. FOR CLARITY, NO INFORMATION CONTAINED HEREIN MAY BE USED TO DEVELOP, IMPROVE, TRAIN OR RETRAIN ANY SOFTWARE PROGRAM OR DATABASE, INCLUDING, BUT NOT LIMITED TO, FOR ANY ARTIFICIAL INTELLIGENCE, MACHINE LEARNING OR NATURAL LANGUAGE PROCESSING SOFTWARE, ALGORITHM, METHODOLOGY AND/OR MODEL.

MOODY'S CREDIT RATINGS, ASSESSMENTS, OTHER OPINIONS AND MATERIALS ARE NOT INTENDED FOR USE BY ANY PERSON AS A BENCHMARK AS THAT TERM IS DEFINED FOR REGULATORY PURPOSES AND MUST NOT BE USED IN ANY WAY THAT COULD RESULT IN THEM BEING CONSIDERED A BENCHMARK.

All information contained herein is obtained by MOODY'S from sources believed by it to be accurate and reliable. Because of the possibility of human or mechanical error as well as other factors, however, all information contained herein is provided "AS IS" without warranty of any kind. MOODY'S adopts all necessary measures so that the information it uses in assigning a credit rating is of sufficient quality and from sources MOODY'S considers to be reliable including, when appropriate, independent third-party sources. However, MOODY'S is not an auditor and cannot in every instance independently verify or validate information received in the credit rating process or in preparing its Materials.

To the extent permitted by law, MOODY'S and its directors, officers, employees, agents, representatives, licensors and suppliers disclaim liability to any person or entity for any indirect, special, consequential, or incidental losses or damages whatsoever arising from or in connection with the information contained herein or the use of or inability to use any such information, even if MOODY'S or any of its directors, officers, employees, agents, representatives, licensors or suppliers is advised in advance of the possibility of such losses or damages, including but not limited to: (a) any loss of present or prospective profits or (b) any loss or damage arising where the relevant financial instrument is not the subject of a particular credit rating assigned by MOODY'S.

To the extent permitted by law, MOODY'S and its directors, officers, employees, agents, representatives, licensors and suppliers disclaim liability for any direct or compensatory losses or damages caused to any person or entity, including but not limited to by any negligence (but excluding fraud, willful misconduct or any other type of liability that, for the avoidance of doubt, by law cannot be excluded) on the part of, or any contingency within or beyond the control of, MOODY'S or any of its directors, officers, employees, agents, representatives, licensors or suppliers, arising from or in connection with the information contained herein or the use of or inability to use any such information.

NO WARRANTY, EXPRESS OR IMPLIED, AS TO THE ACCURACY, TIMELINESS, COMPLETENESS, MERCHANTABILITY OR FITNESS FOR ANY PARTICULAR PURPOSE OF ANY CREDIT RATING, ASSESSMENT, OTHER OPINION OR INFORMATION IS GIVEN OR MADE BY MOODY'S IN ANY FORM OR MANNER WHATSOEVER.

Moody's Investors Service, Inc., a wholly-owned credit rating agency subsidiary of Moody's Corporation ("MCO"), hereby discloses that most issuers of debt securities (including corporate and municipal bonds, debentures, notes and commercial paper) and preferred stock rated by Moody's Investors Service, Inc. have, prior to assignment of any credit rating, agreed to pay Moody's Investors Service, Inc. for credit ratings opinions and services rendered by it. MCO and all MCO entities that issue ratings under the "Moody's Ratings" brand name ("Moody's Ratings"), also maintain policies and procedures to address the independence of Moody's Ratings' credit ratings and credit rating processes. Information regarding certain affiliations that may exist between directors of MCO and rated entities, and between entities who hold credit ratings from Moody's Investors Service, Inc. and have also publicly reported to the SEC an ownership interest in MCO of more than 5%, is posted annually at ir.moody.com under the heading "Investor Relations — Corporate Governance — Charter and Governance Documents - Director and Shareholder Affiliation Policy."

Moody's SF Japan K.K., Moody's Local AR Agente de Clasificación de Riesgo S.A., Moody's Local BR Agência de Classificação de Risco LTDA, Moody's Local MX S.A. de C.V., I.C.V., Moody's Local PE Clasificadora de Riesgo S.A., and Moody's Local PA Clasificadora de Riesgo S.A. (collectively, the "Moody's Non-NRSRO CRAs") are all indirectly wholly-owned credit rating agency subsidiaries of MCO. None of the Moody's Non-NRSRO CRAs is a Nationally Recognized Statistical Rating Organization.

Additional terms for Australia only: Any publication into Australia of this document is pursuant to the Australian Financial Services License of MOODY'S affiliate, Moody's Investors Service Pty Limited ABN 61 003 399 657AFSL 336969 and/or Moody's Analytics Australia Pty Ltd ABN 94 105 136 972 AFSL 383569 (as applicable). This document is intended to be provided only to "wholesale clients" within the meaning of section 761G of the Corporations Act 2001. By continuing to access this document from within Australia, you represent to MOODY'S that you are, or are accessing the document as a representative of, a "wholesale client" and that neither you nor the entity you represent will directly or indirectly disseminate this document or its contents to "retail clients" within the meaning of section 761G of the Corporations Act 2001. MOODY'S credit rating is an opinion as to the creditworthiness of a debt obligation of the issuer, not on the equity securities of the issuer or any form of security that is available to retail investors.

Additional terms for India only: Moody's credit ratings, Assessments, other opinions and Materials are not intended to be and shall not be relied upon or used by any users located in India in relation to securities listed or proposed to be listed on Indian stock exchanges.

Additional terms with respect to Second Party Opinions and Net Zero Assessments (as defined in Moody's Ratings Rating Symbols and Definitions): Please note that neither a Second Party Opinion ("SPO") nor a Net Zero Assessment ("NZA") is a "credit rating". The issuance of SPOs and NZAs is not a regulated activity in many jurisdictions, including Singapore. JAPAN: In Japan, development and provision of SPOs and NZAs fall under the category of "Ancillary Businesses", not "Credit Rating Business", and are not subject to the regulations applicable to "Credit Rating Business" under the Financial Instruments and Exchange Act of Japan and its relevant regulation. PRC: Any SPO: (1) does not constitute a PRC Green Bond Assessment as defined under any relevant PRC laws or regulations; (2) cannot be included in any registration statement, offering circular, prospectus or any other documents submitted to the PRC regulatory authorities or otherwise used to satisfy any PRC regulatory disclosure requirement; and (3) cannot be used within the PRC for any regulatory purpose or for any other purpose which is not permitted under relevant PRC laws or regulations. For the purposes of this disclaimer, "PRC" refers to the mainland of the People's Republic of China, excluding Hong Kong, Macau and Taiwan.

MOODY'S

Thank you

Contact Us

Email	helpeconomy@moodys.com
U.S./Canada	+1.866.275.3266
EMEA	+44.20.7772.5454 (London) +420.234.747.505 (Prague)
Asia/Pacific	+852.3551.3077
All Others	+1.610.235.5299

www.economy.com

Please attribute information in this document to Moody's Analytics, which is a division within Moody's that is separate from Moody's Ratings. Accordingly, the viewpoints expressed herein do not reflect those of Moody's Ratings.