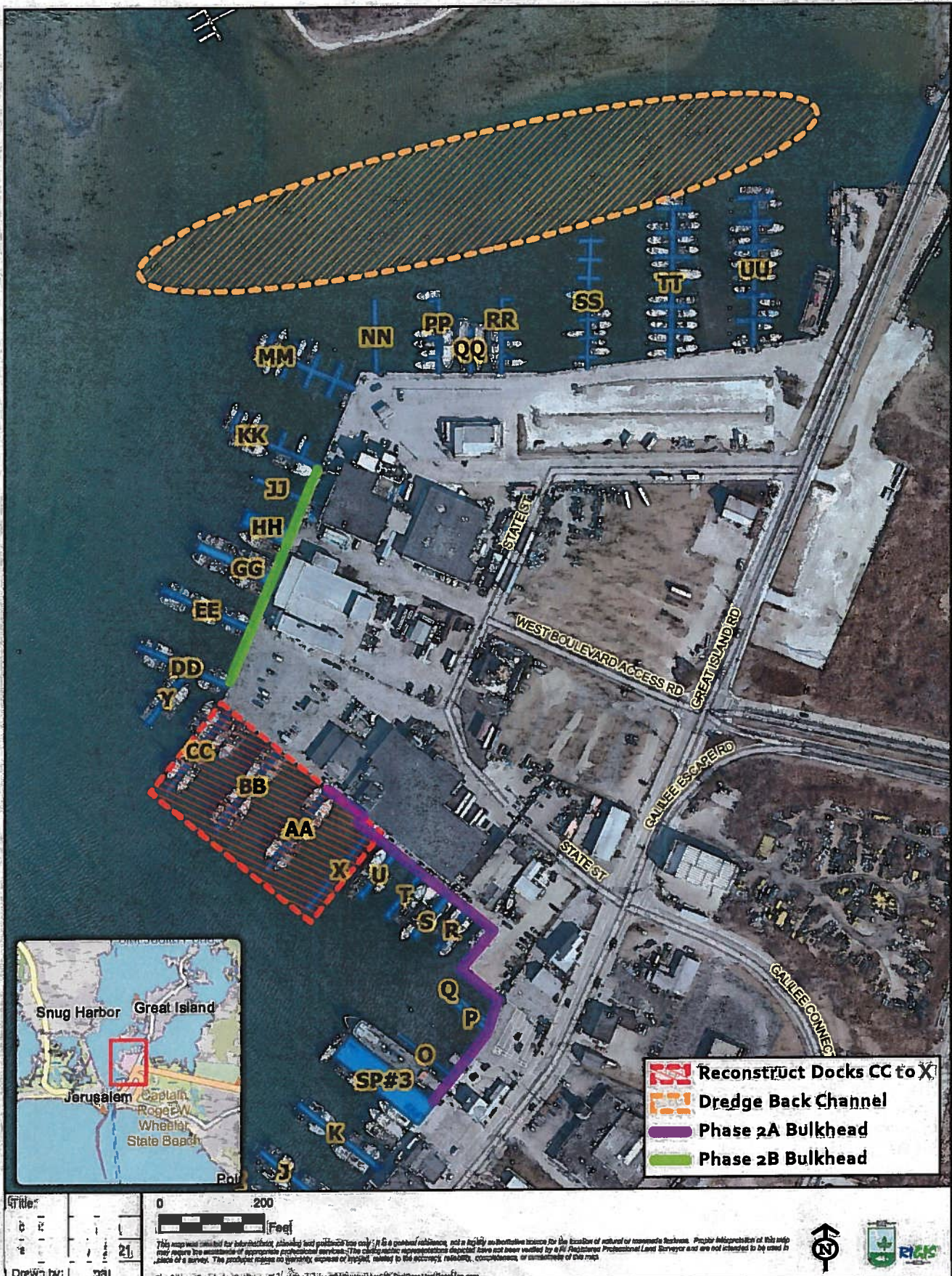


Port of Galilee

Current Port Improvement Projects



Port of Galilee Improvement Projects



The Port of Galilee, located in Narragansett, is the center of activity for Rhode Island's commercial fishing industry. The Port, which ranked 12th in the United States and 3rd on the East Coast with \$66 million in fishery landings in 2019, is home to a diverse set of businesses that collectively form an ecosystem that allows the commercial fishing industry to thrive. In addition to commercial fishermen themselves, these Blue Economy businesses include fish processors, engine repair shops, party and charter vessels, and many others. By virtue of its rare status as a state-owned commercial fishing port, Galilee has remained true to its roots as a working port where the hardworking men and women of the commercial fishing industry can make a living. A University of Rhode Island economic impact analysis found that Rhode Island's fisheries and seafood sector, of which the Port is the most sizable component, directly contributed over 3,100 jobs and more than \$538 million in gross sales.

12th largest port in the U.S. by landing value

3rd largest port on the East Coast by landing value

\$66M in fishery landings

3,100 jobs are held in Rhode Island's commercial fisheries and seafood sector and account for close to **\$538M in gross sales**

4,300 jobs are supported across all sectors by the seafood and fisheries industry and provide nearly **\$420M in economic impact**



In recent years, the Department of Environmental Management (DEM) has secured significant federal and state resources to complete vital infrastructure improvements at the Port of Galilee. However, there is still more work to be done. This work includes replacement of substantial portions of the bulkhead separating water and land, reconstruction of numerous docks used by vessels, and dredging of the back channel to ensure vessels can continue to traverse the area safely.

Keeping the Port's infrastructure in a state of good repair will ensure that Rhode Island's commercial fishing industry can continue to thrive and remain a key component of the state's overall economic success.



www.DEM.RI.gov

[/RhodeIslandDEM](https://www.facebook.com/RhodeIslandDEM)

[@RhodeIslandDEM](https://twitter.com/RhodeIslandDEM)

[@rhodeisland_dem](https://www.instagram.com/rhodeisland_dem)

