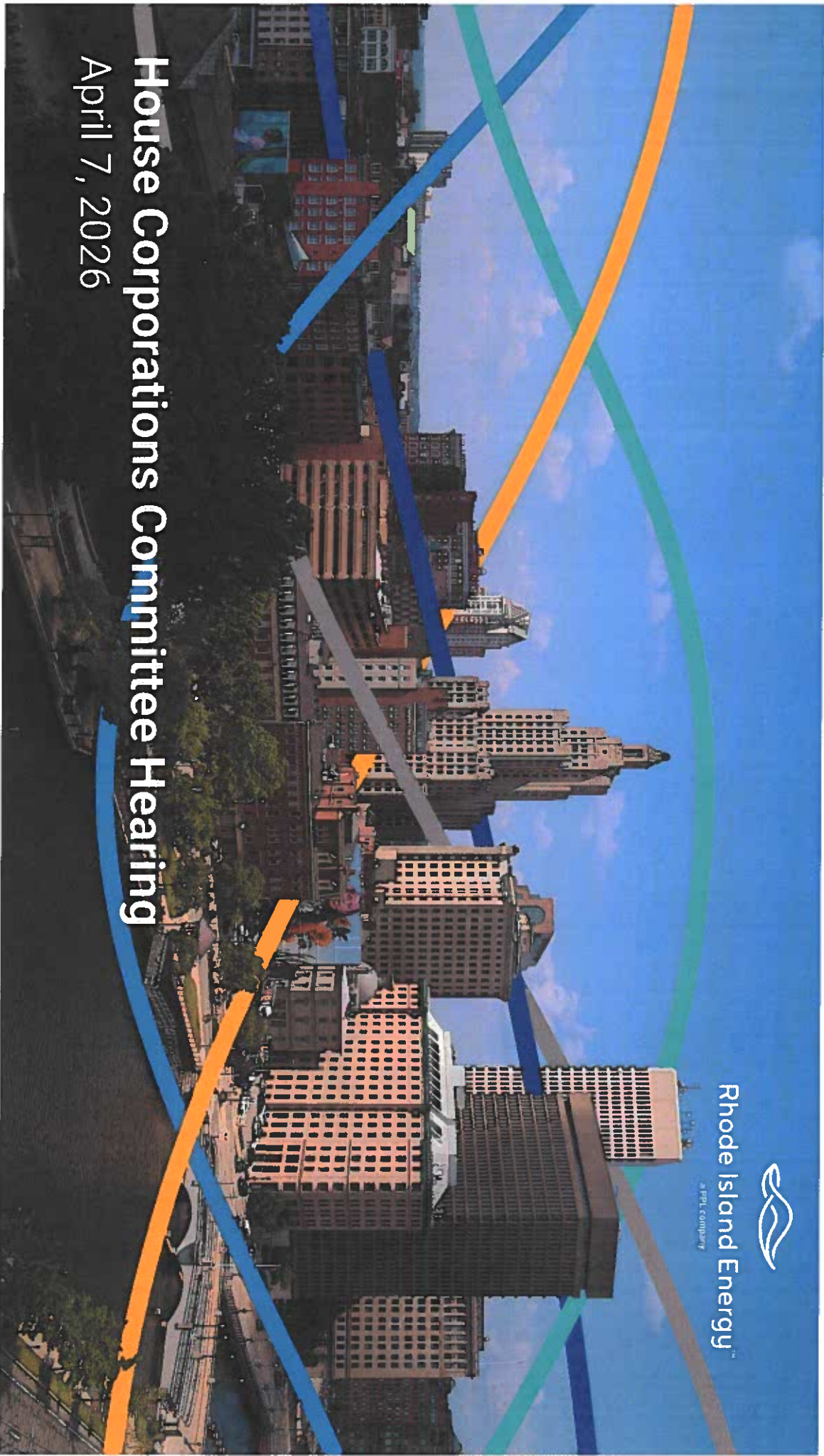




Rhode Island Energy™  
a PPL company

# House Corporations Committee Hearing

April 7, 2026





# Rhode Island Energy (RIE) Electric Bill Components:

## SUMMER 2026\*

### WHAT'S IN MY ELECTRICITY BILL? LET'S UNPACK THE FACTS

ABOUT **26%** OF YOUR BILL THIS SUMMER IS UNDER RIE'S DIRECT CONTROL



#### LOCAL DELIVERY – 26%

Delivery charges support the construction, maintenance and safe operation of critical energy infrastructure across Rhode Island. These investments are vital to the local delivery of electricity that powers homes and businesses, as well as modernizing the grid for a clean energy future. It also includes costs associated with providing customer service, billing, and metering services.

ANOTHER **18%** OF YOUR BILL THIS SUMMER IS UNDER RIE'S PARTIAL CONTROL



#### TRANSMISSION – 18%

Transmission charges, set by the Federal Energy Regulatory Commission, cover the cost of moving electricity across New England's regional grid to the local RIE distribution system.



#### SUPPLY – 33%

About 33% of the average residential electric bill covers the cost to purchase electricity on the market, as RIE is not allowed to own generation resources.

**RIE does not markup supply costs** – they are passed directly to customers, dollar for dollar.

These costs are largely driven by fuel markets, regional pipeline constraints, and availability of renewable energy sources to comply with State law.



#### STATE MANDATES & TAX – 23%

About 23% of the typical residential electric bill consists of state-mandated costs to support clean energy, efficiency and low-income assistance goals. These are included on the "Delivery" section of customer bills as follows:

- RE Growth Program Charge
- LIHEAP Enhancement Charge
- Renewable Energy Distribution Charge
- Energy Efficiency Programs

In addition, RIE is required to collect a Gross Earnings Tax for the State of Rhode Island, and that is shown as a separate line item on customer bills.



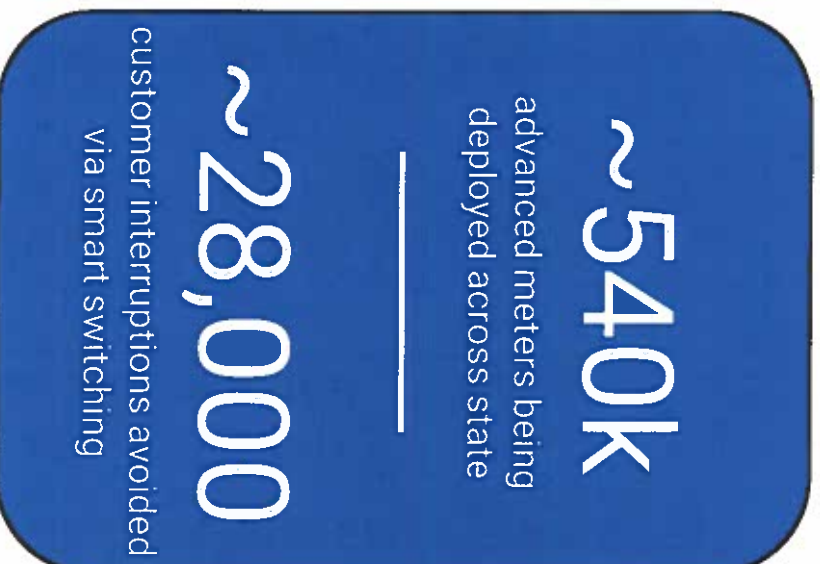
UTILITY PROFIT IS NOT DRIVING COSTS  
In a typical billing period this summer, less than 2.4% represents utility profit.

\*Customer bills vary by usage. Figures here based on 500kWh/month usage with current summer rates for a residential customer.

# Investment Drives Reliability, Modernization & Decarbonization



**Improved Reliability**

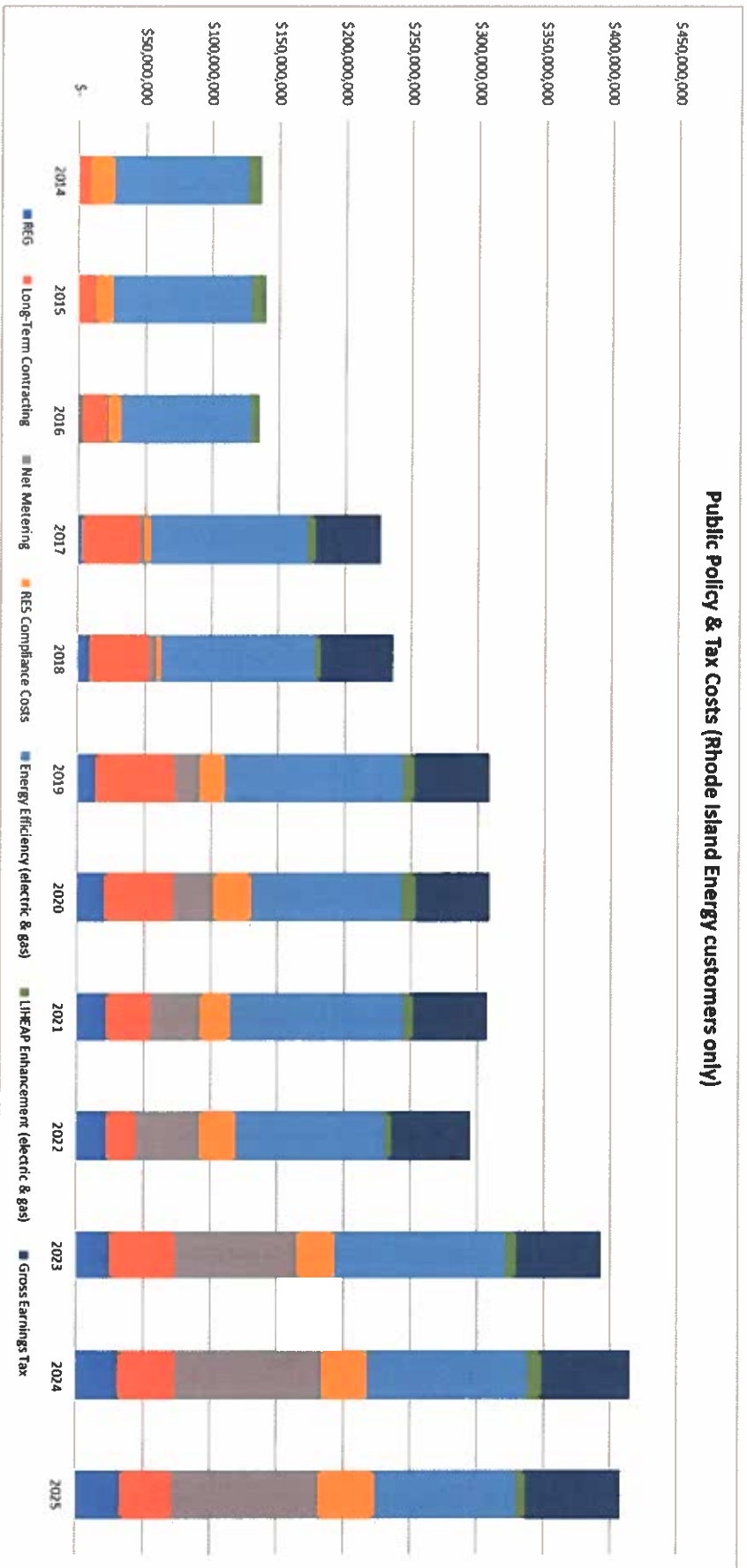


**Integrating Advanced  
Technology**



**Supports  
Decarbonization**

# > \$3.3B in policy & tax charges collected between 2014-2025\*\*



\* The values above reflect RIE customer costs **only** and does not include GET paid between 2014-2016 (data not available); thus, this chart *understates* total statewide policy costs and taxes collected from Rhode Island electric customers during this period.

\*\* 2025 net metering program costs are not available at the time of publication; this chart assumes 2025 net metering program costs at 2024 levels.

# Supply & Public Policy Costs Have Grown Dramatically Faster Than Distribution

## Growth in Bill Impacts, 2021-2026

